

Check Valves

RS 19

Check Valve, In-line, Female Port
280 bar [4000 psi] • 140 l/min [37 US gpm]

DESCRIPTION AND OPERATION

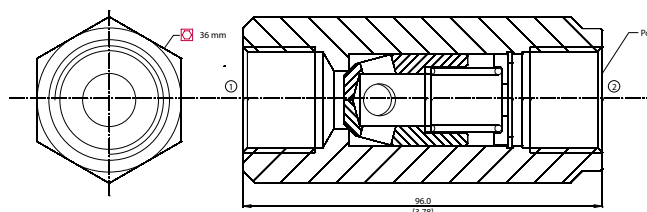
This is an in-line check valve where free flow takes place from port 1 to 2 and is blocked from port 2 to 1.

SCHEMATIC



DIMENSIONS

mm [in]

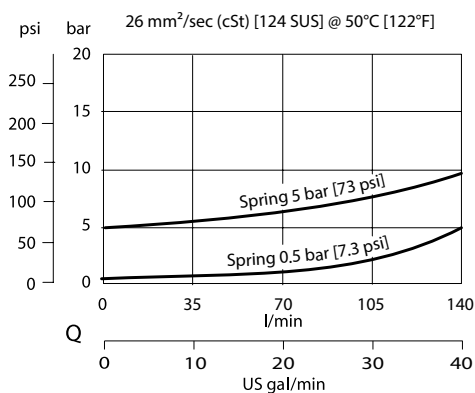


PERFORMANCE DATA

Rated pressure	280 bar [4000 psi]
Rated flow at 7 bar [100 psi]	140 l/min [37 US gpm]
Weight	0.43 kg [0.95 lb]

PERFORMANCE CURVES

Pressure drop



MODEL CODE

RS19 - 0.5 - G

Crack Pressure

Code	Bar	Psi
0.5	0.5	[7.3]
5	5	[73]

Ports

A-#12 SAE
 G-3/4 BSP