

Check Valves

RS 25

Check Valve, In-line, Female Port
240 bar [3500 psi] • 200 l/min [53 US gpm]

DESCRIPTION AND OPERATION

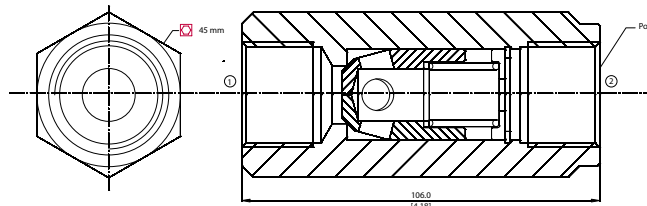
This is an in-line check valve where free flow takes place from port 1 to 2 and is blocked from port 2 to 1.

SCHEMATIC



DIMENSIONS

mm [in]

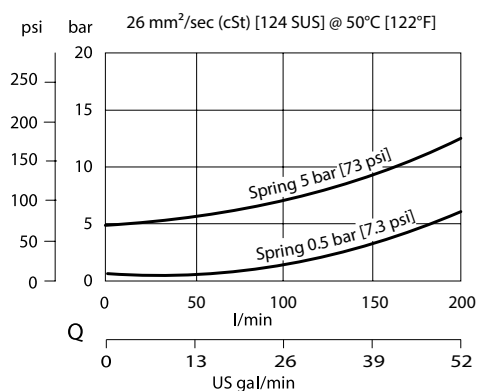


PERFORMANCE DATA

Rated pressure	240 bar [3500 psi]
Rated flow at 7 bar [100 psi]	200 l/min [53 US gpm]
Weight	0.88 kg [1.94 lb]

PERFORMANCE CURVES

Pressure drop



MODEL CODE

RS25 - 0.5 - G

Crack Pressure

Code	Bar	Psi
0.5	0.5	[7.3]
5	5	[73]

Ports

A-#16 SAE
 G-1 BSP