

Directional Control Valves

1SB10

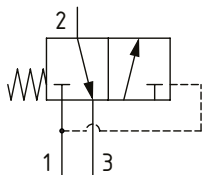
Brake Sequence Directional Valve, 3-Way, Spool Type, Internal Pilot, Internal Drain

350 bar [5000 psi] • 10 l/min [2.6 US gpm]

DESCRIPTION AND OPERATION

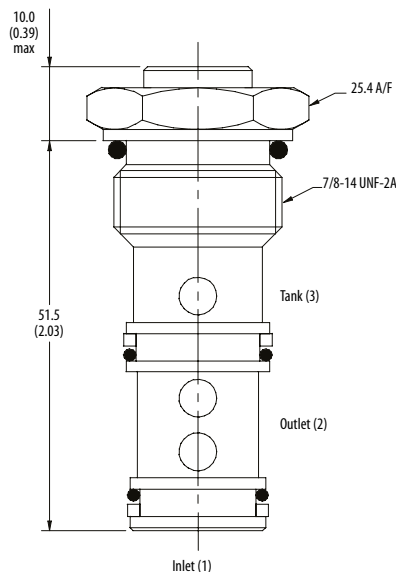
This is a 3-way, spool type, internally piloted directional control valve. Pressure at port 1 will connect port 1 to port 2 and block port 3. When this pressure falls below the spring setting, the valve connects port 2 to port 3 and blocks port 1. This is ideal for brake circuits and allows the brake to automatically dis-engage when the machine is in operation.

SCHEMATIC



DIMENSIONS

mm [in]

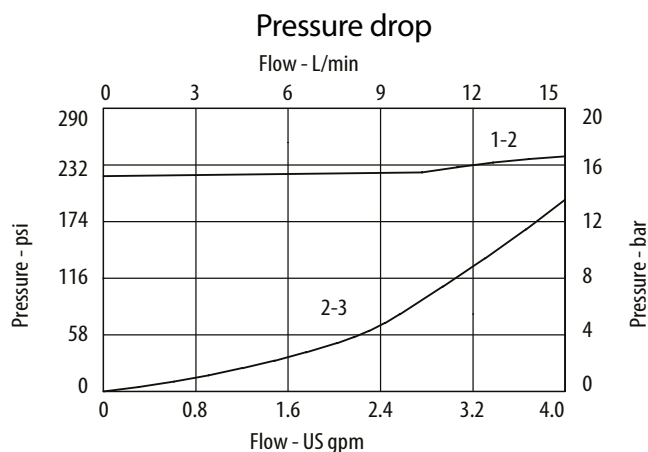


Installation torque
60 Nm [44 ft. lbs]

PERFORMANCE DATA

Rated pressure	350 bar [5000 psi]
Rated flow	10 l/min [2.6 US gpm]
Leakage	50 ml/min nominal
Weight	0.12 kg [0.26 lbs]
Cavity	A893

PERFORMANCE CURVES



MODEL CODE

1SB15 - 3W - S - 377

Basic Code

1SB10 - Cartridge Only
1SB15 - Cartridge and Housing

Housing

Code	Ports	Aluminum single	Steel
0	No housing		
2W	1/4" BSP		A1882
3W	3/8" BSP		A1883
6T	3/8" SAE	A10715	A7371

* Aluminum bodies are to be used for pressures less than 210 bar [3000 psi].

* Additional housings available

Housing Material

Omit - No housing/Aluminum
377 - Steel

Seal Option

Code	Seal Kit
S	Buna-N SK182
SV	Viton SK182V