

Directional Control Valves

MRV2-16

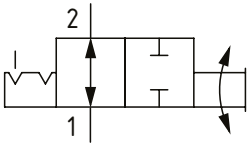
Manual Rotary Restrictor Valve, 2-Way, Spool Type

210 bar [3000 psi] • 170 l/min [45 US gpm]

DESCRIPTION AND OPERATION

This is a 2-way, spool type, manually operated semi-rotary restrictor valve. By rotating the manual actuator, a variable orifice is opened or closed linearly between ports 2 and 1. When used in conjunction with a compensator, the valve will increase the flow in proportion to the movement of the manual actuator.

SCHEMATIC

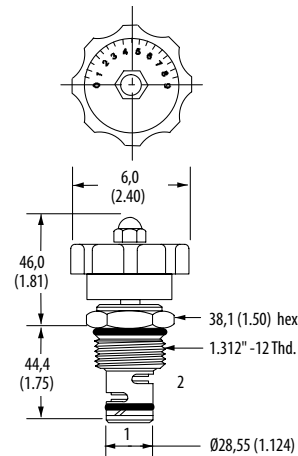


PERFORMANCE DATA

Rated pressure	210 bar [3000 psi]
Rated flow	170 l/min [45 US gpm]
Leakage	82 ml/min [5 in ³ /min] @ 210 bar [3000 psi]
Weight	0.79 kg [1.74 lb]
Cavity	SDC16-2

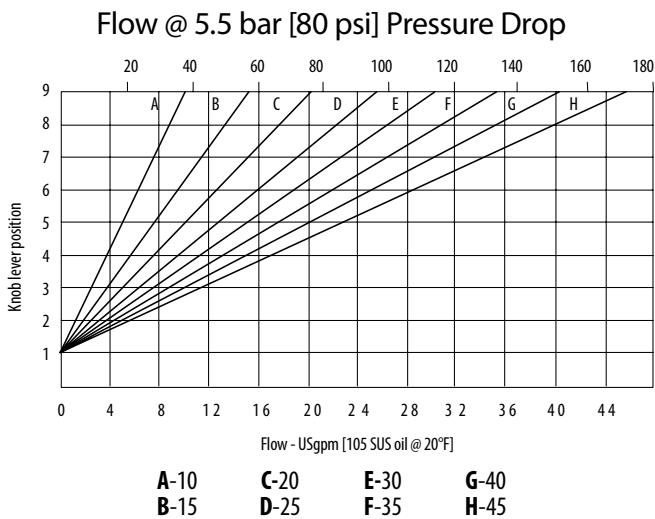
DIMENSIONS

mm [in]



Installation torque
108-122 Nm [80-90 ft lbs]

PERFORMANCE CURVES



MODEL CODE

MRV2 - 16 - V - D - 6B - 10

Seal Option

Code	Seal Kit
Omit-Buna-N	565810
V-Viton	889609

Actuator Option

- O- Cartridge only (no actuator)
 - D -Lever (10 position detent)*
 - L -Lever (friction lock)*
 - K -Knob (non-locking)
- *Standard duty housings only

Housing

Code	Ports	Aluminum Standard duty	Aluminum Heavy duty
0	No Housing		
6B	3/4" BSP	02-175463	
12T	#12 SAE	566149	
4G	1/2" BSP		876716
6G	3/4" BSP		876718
10H	#10 SAE		876717
12H	#12 SAE		566113

* Aluminum bodies are to be used for pressures less than 210 bar [3000 psi].
* Additional housings available

Flow Range

Code	l/min	US gpm
10	0-38	[0-10]
15	0-57	[0-15]
20	0-76	[0-20]
25	0-95	[0-25]
30	0-114	[0-30]
35	0-132	[0-35]
40	0-150	[0-40]
45	0-170	[0-45]