

Directional Control Valves

MRV4-16

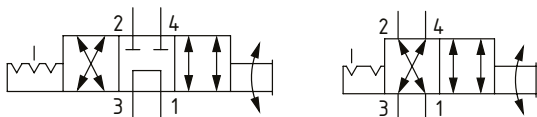
Manual Rotary Valve, 4-Way, Spool Type

210 bar [3000 psi] • 45 l/min [12 US gpm]

DESCRIPTION AND OPERATION

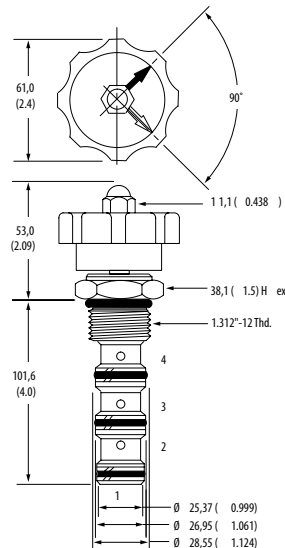
This is a 4-way, spool type, 2 or 3 position manually operated semi-rotary directional control valve. In the center position, port 1 is connected to port 3 and ports 2 and 4 are blocked. By rotating the manual actuator, the flow path will change from ports 3-2 and 1-4 to ports 3-4 and 1-2.

SCHEMATIC



DIMENSIONS

mm [in]

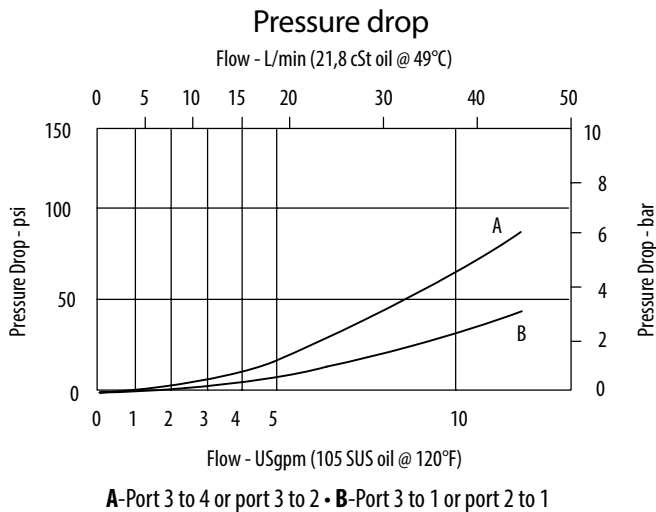


Installation torque
108-122 Nm [80-90 ft lbs]

PERFORMANCE DATA

Rated pressure	210 bar [3000 psi]
Rated flow	45 l/min [12 US gpm]
Weight	0.65 kg [1.43 lb]
Cavity	SDC16-4

PERFORMANCE CURVES



MODEL CODE

MRV4 - 16 - V - D - A - 6B

Seal Option

Code	Seal Kit
Omit-Buna-N	889634
V-Viton	889638

Actuator Option

- O-Cartridge only (no actuator)
- D-Lever (3-position detent)
- D2-Lever (2-position detent)
- K-Knob (2-position, no detent)

Housing Material

- Omit-No housing
- A-Aluminum
- S-Steel

Housing

Code	Ports	Aluminum Standard duty	Aluminum Heavy duty	Steel
0	No housing			
10T	#10 SAE			02-175141
12T	#12 SAE	566411		02-175142
6B	3/4" BSP	02-175468		
10H	#10 SAE		876729	
12H	#12 SAE		876731	
4G	1/2" BSP		876728	02-175143
6G	3/4" BSP		876730	02-175144

* Aluminum bodies are to be used for pressures less than 210 bar [3000 psi].

* Additional housings available