

Directional Control Valves

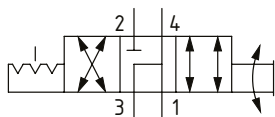
MRV6-10

Manual Rotary Valve, 4-Way, Spool Type
210 bar [3000 psi] • 11 l/min [3 US gpm]

DESCRIPTION AND OPERATION

This is a 4-way, spool type, 3 position manually operated semi-rotary directional control valve. In the center position, ports 1, 3 and 4 are connected to each other and port 2 is blocked. By rotating the manual actuator, the flow path will change from ports 3-2 and 1-4 to ports 3-4 and 1-2.

SCHEMATIC

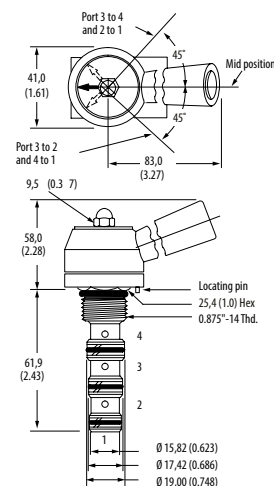


PERFORMANCE DATA

Rated pressure	210 bar [3000 psi]
Rated flow	11 l/min [3 US gpm]
Leakage	164 ml/min [10 in ³ /min] @ 210 bar [3000 psi]
Weight	0.27 kg [0.59 lb]
Cavity	SDC10-4

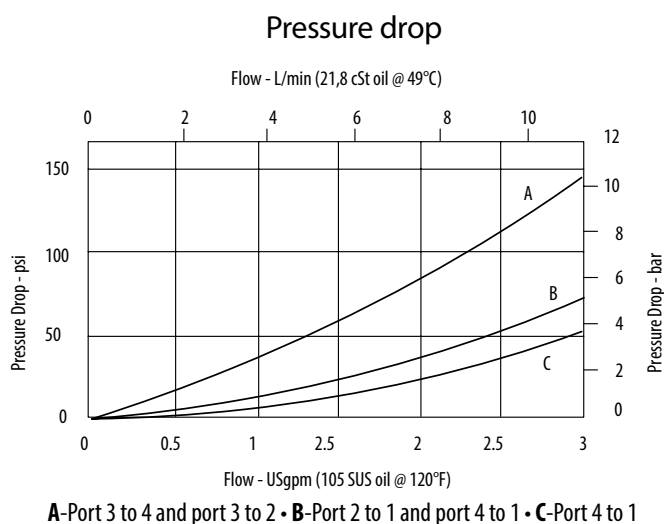
DIMENSIONS

mm [in]



Installation torque
 47-54 Nm [35-40 ft lbs]

PERFORMANCE CURVES



MODEL CODE

MRV6 - 10 - V - D - A - 3B

Seal Option

Code	Seal Kit
Omit-Buna-N	889625
V-Viton	566080

Actuator Option

- O**-Cartridge only (no actuator)
- D**-Lever (3-position detent)
- E**-Ball (3-position detent)

Housing Material

- Omit**-No housing
- A**-Aluminum
- S**-Steel

Housing

Code	Ports	Aluminum Standard duty	Aluminum Heavy duty	Steel
0	No housing			
3B	3/8" BSP	02-179705		
6T	#6 SAE	02-168235		02-175137
8T	#8 SAE			02-175138
2G	1/4" BSP		02-185804	02-175139
3G	3/8" BSP		02-185805	02-175140
6H	#6 SAE		02-185802	
8H	#8 SAE		02-185803	

* Aluminum bodies are to be used for pressures less than 210 bar [3000 psi].
 * Additional housings available