

# Directional Control Valves

## MRV13-16

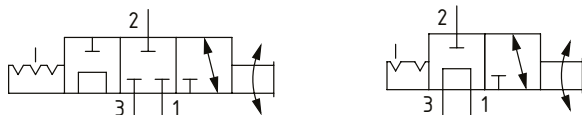
Manual Rotary Valve, 3-Way, Spool Type

350 bar [5000 psi] • 65 l/min [17 US gpm]

### DESCRIPTION AND OPERATION

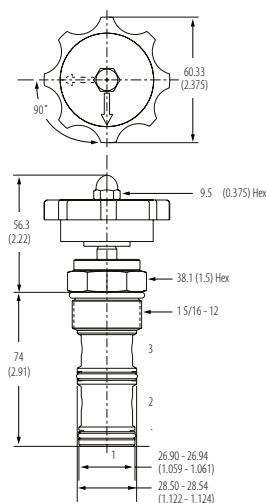
This is a 3-way, spool type, 2 or 3 position manually operated semi-rotary directional control valve. By rotating the manual actuator, the flow path will change from port 1 connected to port 3 (port 2 blocked) to port 1 connected to port 2 (port 3 blocked). Using the manual actuator and detent, the crossover condition can be used to create a third position with all ports blocked. This valve can be used as a diverter or as a dump valve.

### SCHEMATIC



### DIMENSIONS

mm [in]

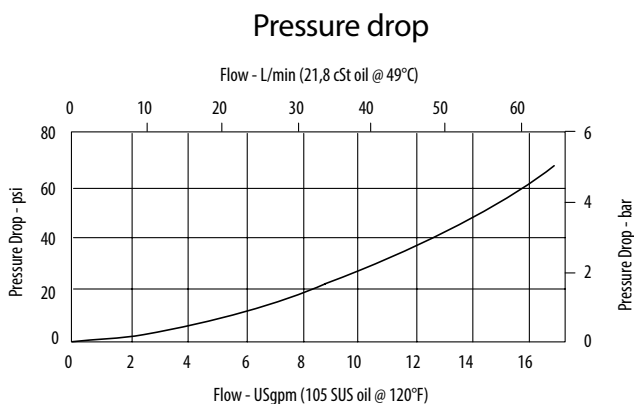


**Installation torque**  
**A**-108-122 Nm [80-90 ft. lbs]  
**S**-136-149 Nm [100-110 ft. lbs]

### PERFORMANCE DATA

<b>Rated pressure</b>	<b>350 bar [5000 psi]</b>
<b>Rated flow</b>	<b>65 l/min [17 US gpm]</b>
<b>Leakage</b>	250 ml/min [15 in <sup>3</sup> /min] @ 350 bar [5000 psi]
<b>Weight</b>	0.53 kg [1.16 lb]
<b>Cavity</b>	SDC16-3

### PERFORMANCE CURVES



### MODEL CODE

**MRV13 - 16 - V - D - A - 4G**

#### Seal Option

Code	Seal Kit
<b>O</b> -Buna-N	889632
<b>V</b> -Viton	889636

#### Actuator Option

- O**-Cartridge only (no actuator)
- D**-Lever (3-position detent)
- D2**-Lever (2-position detent)
- K**-Knob (2-position, no detent)

#### Housing Material

- O**mit-No housing
- A**-Aluminum
- S**-Steel

#### Housing

Code	Ports	Aluminum Heavy duty	Steel
<b>O</b>	No Housing		
<b>10H</b>	#10 SAE	876721	
<b>12H</b>	#12 SAE	876723	
<b>4G</b>	1/2" BSP	876720	02-175131
<b>6G</b>	3/4" BSP	876722	02-175132
<b>10T</b>	#10 SAE		02-175129
<b>12T</b>	#12 SAE		02-175130

\* Aluminum bodies are to be used for pressures less than 210 bar [3000 psi].  
 \* Additional housings available