

# Directional Control Valves

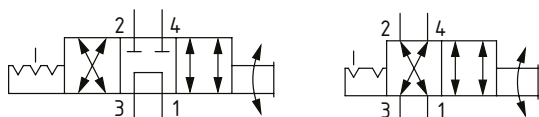
## MRV14-10

Manual Rotary Valve, 4-Way, Spool Type  
**350 bar [5000 psi] • 11 l/min [3 US gpm]**

### DESCRIPTION AND OPERATION

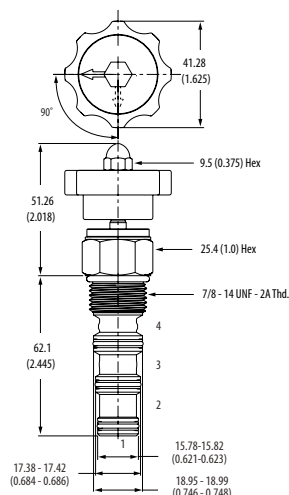
This is a 4-way, spool type, 2 or 3 position manually operated semi-rotary directional control valve. In the center position, port 1 is connected to port 3 and ports 2 and 4 are blocked. By rotating the manual actuator, the flow path will change from ports 3-2 and 1-4 to ports 3-4 and 1-2.

### SCHEMATIC



### DIMENSIONS

mm [in]

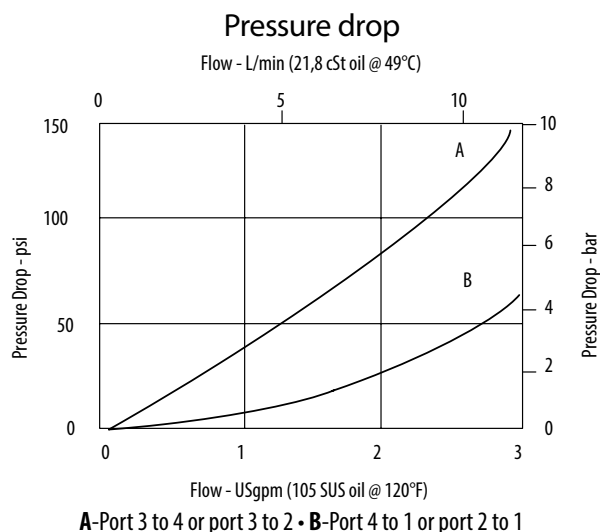


**Installation torque**  
**A-47-54 Nm [35-40 ft. lbs]**  
**S-68-75 Nm [50-55 ft. lbs]**

### PERFORMANCE DATA

<b>Rated pressure</b>	<b>350 bar [5000 psi]</b>
<b>Rated flow</b>	<b>11 l/min [3 US gpm]</b>
<b>Leakage</b>	300 ml/min [18 in <sup>3</sup> /min] @ 350 bar [5000 psi]
<b>Weight</b>	0.17 kg [0.38 lb]
<b>Cavity</b>	SDC10-4

### PERFORMANCE CURVES



### MODEL CODE

**MRV14 - 10 - V - D - A - 3B**

#### Seal Option

Code	Seal Kit
Omit-Buna-N	565805
V-Viton	889600

#### Actuator Option

- O**-Cartridge only (no actuator)
- D**-Lever (3-position detent)
- D2**-Lever (2-position detent)
- E**-Ball (3-position detent)
- E2**-Ball (2-position detent)
- K**-Knob (2-position, no detent)

#### Housing Material

- Omit**-No housing
- A**-Aluminum
- S**-Steel

#### Housing

Code	Ports	Aluminum Standard duty	Aluminum Heavy duty	Steel
<b>0</b>	No housing			
<b>3B</b>	3/8" BSP	02-179705		
<b>6T</b>	#6 SAE	02-168235		02-175137
<b>8T</b>	#8 SAE			02-175138
<b>2G</b>	1/4" BSP		02-185804	02-175139
<b>3G</b>	3/8" BSP		02-185805	02-175140
<b>6H</b>	#6 SAE		02-185802	
<b>8H</b>	#8 SAE		02-185803	

\* Aluminum bodies are to be used for pressures less than 210 bar [3000 psi].  
 \* Additional housings available