

Directional Control Valves

MRV14-12

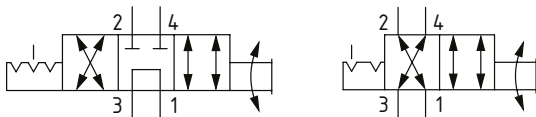
Manual Rotary Valve, 4-Way, Spool Type

350 bar [5000 psi] • 23 l/min [6 US gpm]

DESCRIPTION AND OPERATION

This is a 4-way, spool type, 2 or 3 position manually operated semi-rotary directional control valve. In the center position, port 1 is connected to port 3 and ports 2 and 4 are blocked. By rotating the manual actuator, the flow path will change from ports 3-2 and 1-4 to ports 3-4 and 1-2.

SCHEMATIC

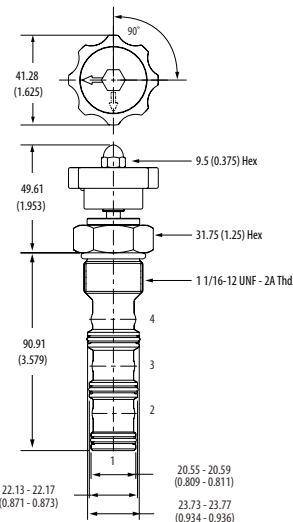


PERFORMANCE DATA

Rated pressure	350 bar [5000 psi]
Rated flow	23 l/min [6 US gpm]
Leakage	300 ml/min [18 in ³ /min] @ 350 bar [5000 psi]
Weight	0.45 kg [0.99 lb]
Cavity	C-12-4

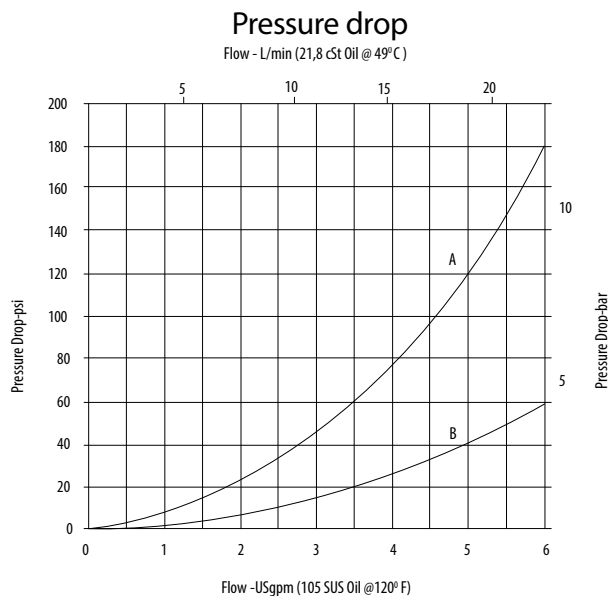
DIMENSIONS

mm [in]



Installation torque
A-81-95 Nm [60-70 ft. lbs]
B-102-115 Nm [75-85 ft. lbs]

PERFORMANCE CURVES



A-Port 3 to 4 or port 3 to 2 • B-Port 4 to 1 or port 2 to 1

MODEL CODE

MRV14 - 12 - V - D - A - 4G

Seal Option

Code	Seal Kit
Omit-Buna-N	02-160979
V-Viton	02-160980

Actuator Option

- O- Cartridge only (no actuator)
- D- Lever (3-position detent)
- D2- Lever (2-position detent)
- E- Ball (3-position detent)
- E2- Ball (2-position detent)
- K- Knob (2-position, no detent)

Housing Material

- Omit- No housing
- A- Aluminum
- S- Steel

Housing

Code	Ports	Aluminum Heavy duty	Steel
0	No housing		
4G	1/2" BSP	5986431-001	
6G	3/4" BSP	5986432-001	5991073-001
8H	#8 SAE	5986433-001	
10H	#10 SAE	5986434-001	5991074-001
12H	#12 SAE	5986436-001	5991075-001

* Aluminum bodies are to be used for pressures less than 210 bar [3000 psi].
 * Additional housings available