

Directional Control Valves

MRV15-10

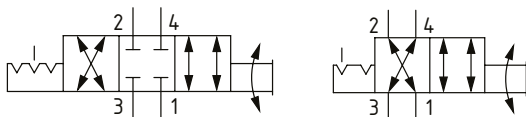
Manual Rotary Valve, 4-Way, Spool Type

350 bar [5000 psi] • 11 l/min [3 US gpm]

DESCRIPTION AND OPERATION

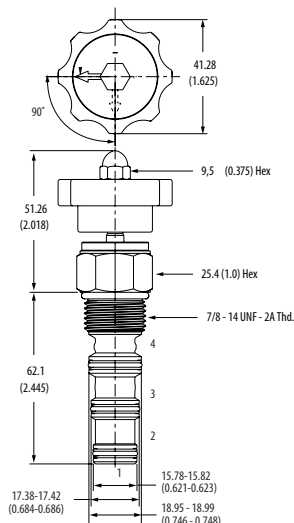
This is a 4-way, spool type, 2 or 3 position manually operated semi-rotary directional control valve. In the center position all ports are blocked. By rotating the manual actuator, the flow path will change from ports 3-2 and 1-4 to ports 3-4 and 1-2.

SCHEMATIC



DIMENSIONS

mm [in]

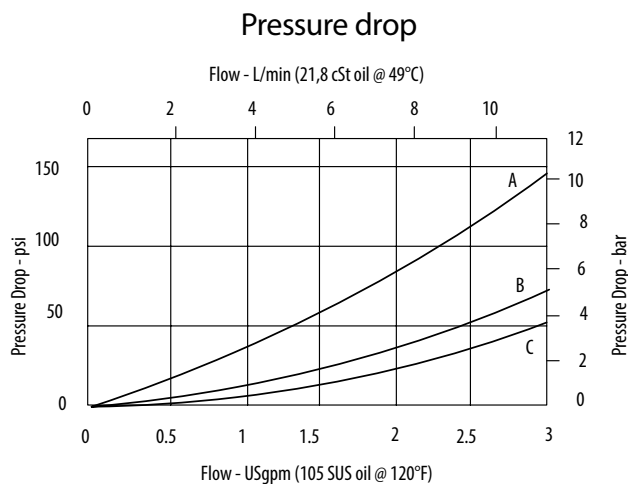


Installation torque
A-47-54 Nm [35-40 ft. lbs]
S-68-75 Nm [50-55 ft. lbs]

PERFORMANCE DATA

Rated pressure	350 bar [5000 psi]
Rated flow	11 l/min [3 US gpm]
Leakage	300 ml/min [18 in ³ /min] @ 350 bar [5000 psi]
Weight	0.27 kg [0.59 lb]
Cavity	SDC10-4

PERFORMANCE CURVES



MODEL CODE

MRV15 - 10 - V - 0 - A - 3B

Seal Option

Code	Seal Kit
Omit-Buna-N	565805
V-Viton	889600

Actuator Option

- O- Cartridge only (no actuator)
- D- Lever (3-position detent)
- D2- Lever (2-position detent)
- E- Ball (3-position detent)
- E2- Ball (2-position detent)
- K- Knob (2-position, no detent)

Housing Material

- Omit-No housing
- A- Aluminum
- S- Steel

Housing

Code	Ports	Aluminum Standard duty	Aluminum Heavy duty	Steel
0	No housing			
3B	3/8" BSP	02-179705		
6T	#6 SAE	02-168235		02-175137
8T	#8 SAE			02-175138
2G	1/4" BSP		02-185804	02-175139
3G	3/8" BSP		02-185805	02-175140
6H	#6 SAE		02-185802	
8H	#8 SAE		02-185803	

* Aluminum bodies are to be used for pressures less than 210 bar [3000 psi].
 * Additional housings available