

# Directional Control Valves

## MSV2-12

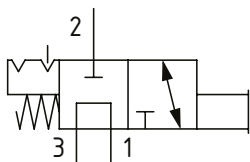
Manual Push Valve with Detent, 3-Way, Spool Type

210 bar [3000 psi] • 38 l/min [10 US gpm]

### DESCRIPTION AND OPERATION

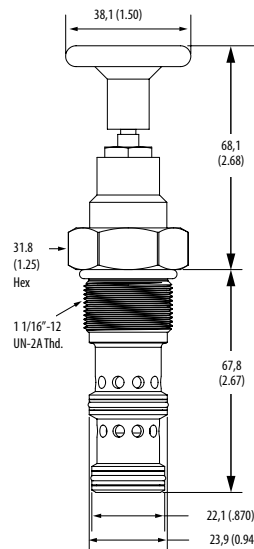
This is a 3-way, spool type, 2 position, push to open directional control valve with a push and twist detent. In the normal position, port 3 is connected to port 1 and port 2 is blocked. When the knob is manually pushed downward, port 3 is blocked and port 1 is connected to port 2. It can be held in this position by twisting the knob to engage the detent. This valve can be used to prevent flow to part of a system until manual intervention takes place.

### SCHEMATIC



### DIMENSIONS

mm [in]



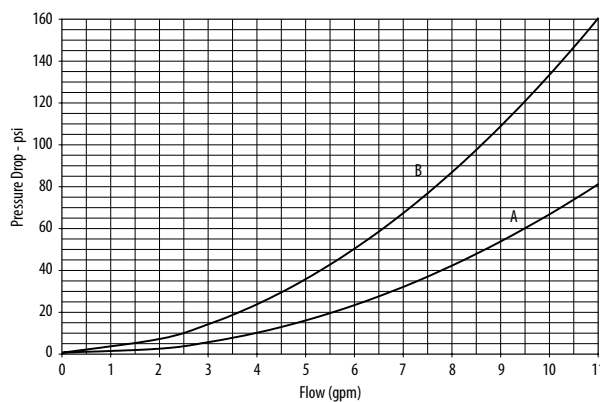
Installation torque  
81-95 Nm [60-70 ft lbs]

### PERFORMANCE DATA

Rated pressure	210 bar [3000 psi]
Rated flow	38 l/min [10 US gpm]
Leakage	350 ml/min [21.5 in <sup>3</sup> /min] @ 210 bar [3000 psi]
Weight	0.29 kg [0.66 lb]
Cavity	C-12-3

### PERFORMANCE CURVES

Pressure drop



A-Port 2 to 1 • B-Port 1 to 3

### MODEL CODE

**MSV2 - 12 - V - L - A - 12H**

#### Seal Option

Code	Seal Kit
Omit-Buna-N	9900171-000
V-Viton	9900172-000

#### Actuator Option

- L-Push and Twist, with detent
- E-Push/Pull, with detent
- N-No detent, momentary actuation

#### Housing Material

- Omit - No housing
- A - Aluminum

#### Housing

Code	Ports	Aluminum
0	No housing	
4G	1/2" BSP	02-161817
6G	3/4" BSP	02-161816
10H	#10 SAE	02-160642
12H	#12 SAE	02-160646

\* Aluminum bodies are to be used for pressures less than 210 bar [3000 psi].  
\* Additional housings available