

# Directional Control Valves

## MSV3-12

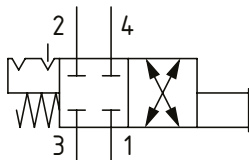
Manual Push Valve with Detent, 4-Way, Spool Type

210 bar [3000 psi] • 53 l/min [14 US gpm]

### DESCRIPTION AND OPERATION

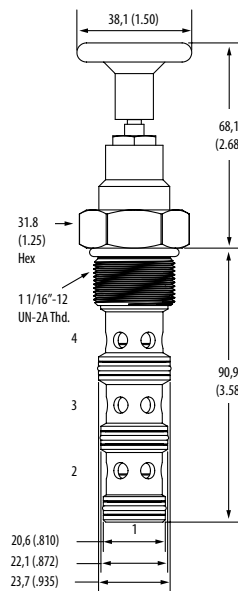
This is a 4-way, spool type, 2 position, push to open directional control valve with a push and twist detent. In the normal position all ports are blocked. When the knob is manually pushed downward, port 1 is connected to port 2 and port 3 is connected to port 4. It can be held in this position by twisting the knob to engage the detent. This valve can be used to isolate an actuator until manual intervention takes place.

### SCHEMATIC



### DIMENSIONS

mm [in]



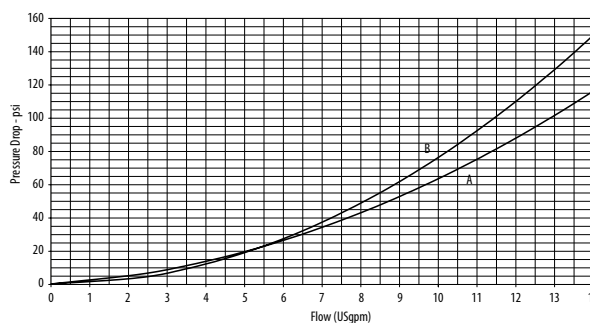
**Installation torque**  
81-95 Nm [60-70 ft lbs]

### PERFORMANCE DATA

<b>Rated pressure</b>	<b>210 bar [3000 psi]</b>
<b>Rated flow</b>	<b>53 l/min [14 US gpm]</b>
<b>Leakage</b>	350 ml/min [21.5 in <sup>3</sup> /min] @ 210 bar [3000 psi]
<b>Weight</b>	0.32 kg [0.72 lb]
<b>Cavity</b>	C-12-4

### PERFORMANCE CURVES

Pressure drop



A-Port 3 to 4 • B-Port 2 to 1

### MODEL CODE

**MSV3 - 12 - V - L - A - 6G**

#### Seal Option

Code	Seal Kit
<b>Omit</b> -Buna-N	02-160979
<b>V</b> -Viton	02-160980

#### Actuator Option

**L**-Push and Twist, with detent  
**E**-Push/Pull, with detent  
**N**-No detent, momentary actuation

#### Housing

Code	Ports	Aluminum
<b>0</b>	No housing	
<b>6G</b>	3/4" BSP	5986432-001
<b>10T</b>	#10 SAE	6030517-001
<b>12H</b>	#12 SAE	5986436-001

\* Aluminum bodies are to be used for pressures less than 210 bar [3000 psi].

\* Additional housings available

#### Housing Material

**Omit** - No housing  
**A** - Aluminum