

Directional Control Valves

MSV5-12

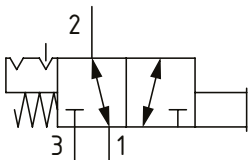
Manual Push Valve with Detent, 3-Way, Spool Type

210 bar [3000 psi] • 42 l/min [11 US gpm]

DESCRIPTION AND OPERATION

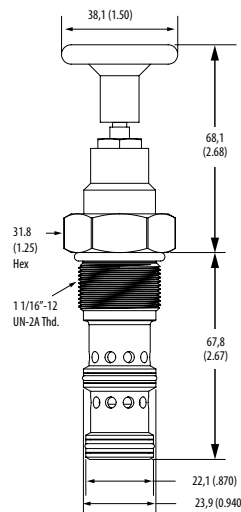
This is a 3-way, spool type, 2 position, push to open directional control valve with a push and twist detent. In the normal position, port 1 is connected to port 2 and port 3 is blocked. When the knob is manually pushed downward, port 1 is blocked and port 2 is connected to port 3. It can be held in this position by twisting the knob to engage the detent. This valve can be used to prevent flow to part of a system until manual intervention takes place.

SCHEMATIC



DIMENSIONS

mm [in]

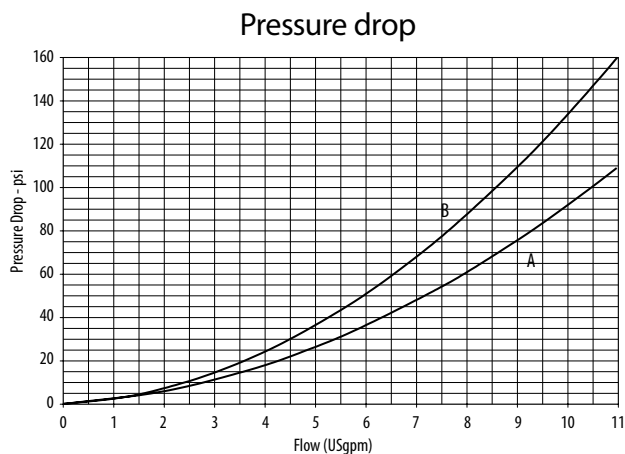


Installation torque
81-95 Nm [60-70 ft lbs]

PERFORMANCE DATA

Rated pressure	210 bar [3000 psi]
Rated flow	42 l/min [11 US gpm]
Leakage	350 ml/min [21.5 in ³ /min] @ 210 bar [3000 psi]
Weight	0.29 kg [0.66 lb]
Cavity	C-12-3

PERFORMANCE CURVES



A-Port 2 to 1 • B-Port 3 to 2

MODEL CODE

MSV5 - 12 - V - L - A - 6G

Seal Option

Code	Seal Kit
Omit-Buna-N	9900171-000
V-Viton	9900172-000

Actuator Option

L-Push and Twist, with detent
E-Push/Pull, with detent
N-No detent, momentary actuation

Housing

Code	Ports	Aluminum
0	No housing	
6G	3/4" BSP	02-161816
12H	#12 SAE	02-160646

* Aluminum bodies are to be used for pressures less than 210 bar [3000 psi].
* Additional housings available

Housing Material

Omit - No housing
A - Aluminum