

# Directional Control Valves

## MSV7-12

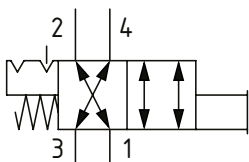
Manual Push Valve with Detent, 4-Way, Spool Type

210 bar [3000 psi] • 45 l/min [12 US gpm]

### DESCRIPTION AND OPERATION

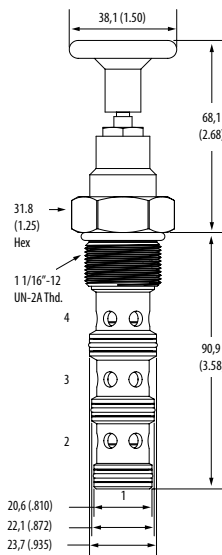
This is a 4-way, spool type, 2 position, push to open directional control valve with a push and twist detent. In the normal position port 1 is connected to port 2 and port 3 is connected to port 4. When the knob is manually pushed downward, port 1 is connected to port 4 and port 3 is connected to port 2. It can be held in this position by twisting the knob to engage the detent. The valve can be used to reverse an actuator until manual intervention takes place.

### SCHEMATIC



### DIMENSIONS

mm [in]

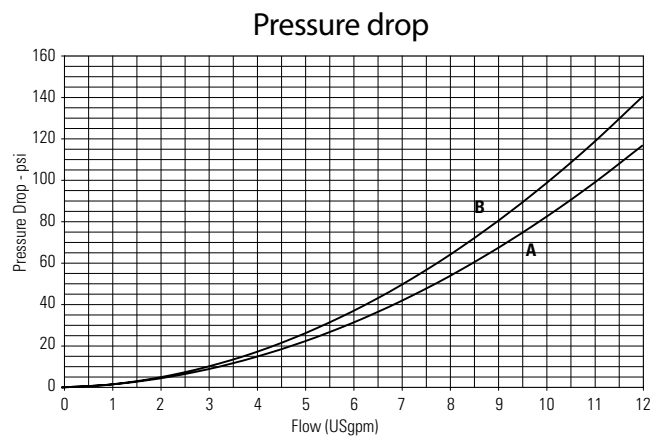


Installation torque  
81-95 Nm [60-70 ft. lbs]

### PERFORMANCE DATA

Rated pressure	210 bar [3000 psi]
Rated flow	45 l/min [12 US gpm]
Leakage	350 ml/min [21.5 in <sup>3</sup> /min] @ 210 bar [3000 psi]
Weight	0.32 kg [0.71 lb]
Cavity	C-12-4

### PERFORMANCE CURVES



A - Port 4 to 1, Port 3 to 2 • B - Port 2 to 1, Port 3 to 4

### MODEL CODE

**MSV7 - 12 - V - L - A - 6G**

#### Seal Option

Code	Seal Kit
Omit-Buna-N	02-160979
V-Viton	02-160980

#### Actuator option

L-Push and Twist, with detent  
E-Push/Pull, with detent  
N-No detent, momentary actuation

#### Housing Material

Omit - No housing  
A - Aluminum

#### Housing

Code	Ports	Aluminum
0	No housing	
6G	3/4" BSP	5986432-001
10T	#10 SAE	6030517-001
12H	#12 SAE	5986436-001

\* Aluminum bodies are to be used for pressures less than 210 bar [3000 psi].

\* Additional housings available