

# Directional Control Valves

## PTS1-10

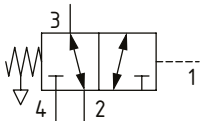
Directional Control Valve, 3-Way, Spool Type, Hydraulic Pilot, Atmospheric Vent

210 bar [3000 psi] • 30 l/min [8 US gpm]

### DESCRIPTION AND OPERATION

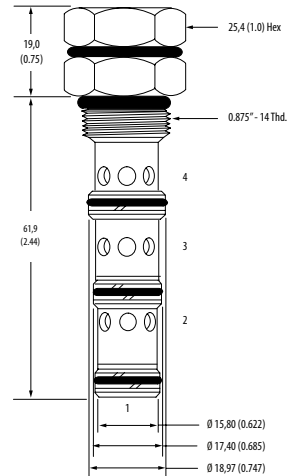
This is a 3-way, spool type, hydraulically piloted directional control valve with an atmospheric vent. In the normal condition, port 2 is connected to port 3 and port 4 is blocked. Pilot pressure at port 1 will cause the valve to shift, connecting port 3 to port 4 with port 2 blocked. During the cross-over transition, all ports are blocked. This valve can be used as a selector valve when combined with a pilot solenoid valve.

### SCHEMATIC



### DIMENSIONS

mm [in]

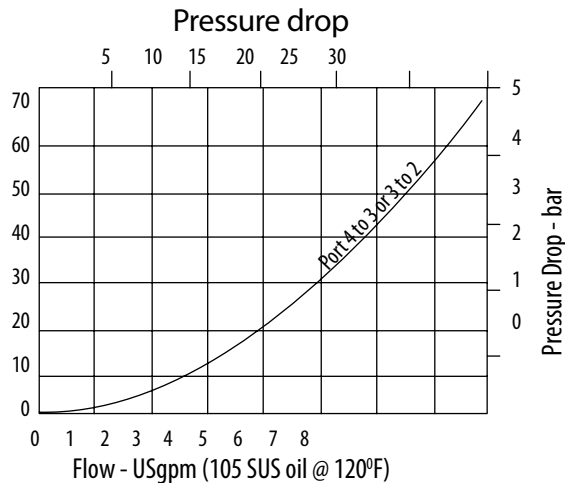


Installation torque  
47-54 Nm [35-40 ft lbs]

### PERFORMANCE DATA

Rated pressure	210 bar [3000 psi]
Rated flow	30 l/min [8 US gpm]
Leakage	164 ml/min [10 in <sup>3</sup> /min] @ 210 bar [3000 psi]
Weight	0.14 kg [0.32 lb]
Cavity	SDC10-4

### PERFORMANCE CURVES



### MODEL CODE

PTS1 - 10 - V - 0 - 40

#### Seal Option

Code	Seal Kit
Omit-Buna-N	889625
V-Viton	566080

#### Housing

Code	Ports	Aluminum Standard duty	Aluminum Heavy duty
0	No housing		
3B	3/8" BSP	02-179705	
6T	#6 SAE	02-168235	
2G	1/4" BSP		876709
3G	3/8" BSP		876715
6H	#6 SAE		876708
8H	#8 SAE		876713

\* Aluminum bodies are to be used for pressures less than 210 bar [3000 psi].

\* Additional housings available

#### Shift Pressure

Code	Bar	[Psi]
40	2.75	[40]
80	5.5	[80]
160	11.0	[160]