

Directional Control Valves

PTS1-20

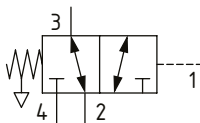
Directional Control Valve, 3-Way, Spool Type, Hydraulic Pilot, Atmospheric Vent

210 bar [3000 psi] • 265 l/min [70 US gpm]

DESCRIPTION AND OPERATION

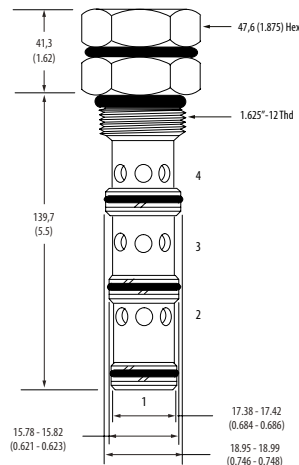
This is a 3-way, spool type, hydraulically piloted directional control valve with an atmospheric vent. In the normal condition, port 2 is connected to port 3 and port 4 is blocked. Pilot pressure at port 1 will cause the valve to shift, connecting port 3 to port 4 with port 2 blocked. During the cross-over transition, all ports are blocked. This valve can be used as a selector valve when combined with a pilot solenoid valve.

SCHEMATIC



DIMENSIONS

mm [in]

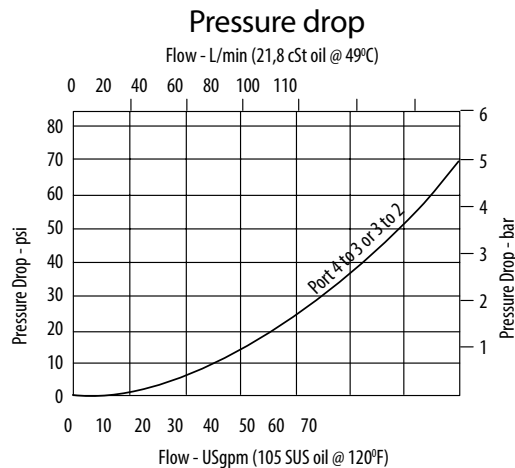


Installation torque
128-155 Nm [95-115 ft. lbs]

PERFORMANCE DATA

Rated pressure	210 bar [3000 psi]
Rated flow	265 l/min [70 US gpm]
Leakage	164 ml/min [10 in ³ /min] @ 210 bar [3000 psi]
Weight	1.1 kg [2.40 lb]
Cavity	SDC20-4

PERFORMANCE CURVES



MODEL CODE

PTS1 - 20 - V - 0 - 40

Seal Option

Code	Seal Kit
Omit-Buna-N	565916
V-Viton	889646

Housing

Code	Ports	Aluminum Standard duty	Aluminum Heavy duty
0	No housing		
16T	#16 SAE	566412	
8B	1" BSP	02-175469	
12H	#12 SAE		876745
16H	#16 SAE		876747
6G	3/4" BSP		876744
8G	1" BSP		876746

* Aluminum bodies are to be used for pressures less than 210 bar [3000 psi].

* Additional housings available

Shift Pressure

Code	Bar	[Psi]
40	2.75	[40]
80	5.5	[80]