

Directional Control Valves

PTS1-16

Directional Control Valve, 3-Way, Spool Type, Hydraulic Pilot, Atmospheric Vent

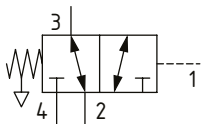
210 bar [3000 psi] • 132 l/min [35 US gpm]

DESCRIPTION AND OPERATION

This is a 3-way, spool type, hydraulically piloted directional control valve with an atmospheric vent.

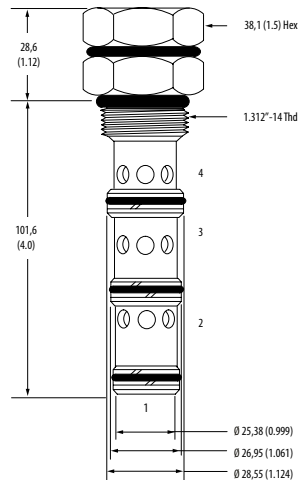
In the normal condition, port 2 is connected to port 3 and port 4 is blocked. Pilot pressure at port 1 will cause the valve to shift, connecting port 3 to port 4 with port 2 blocked. During the cross-over transition, all ports are blocked. This valve can be used as a selector valve when combined with a pilot solenoid valve.

SCHEMATIC



DIMENSIONS

mm [in]

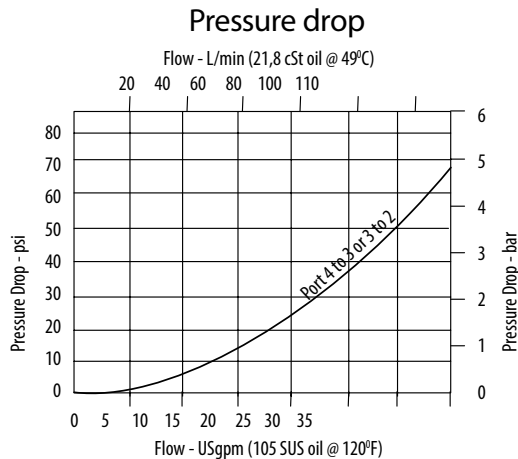


Installation torque
108-122 Nm [80-90 ft. lbs]

PERFORMANCE DATA

Rated pressure	210 bar [3000 psi]
Rated flow	132 l/min [35 US gpm]
Leakage	164 ml/min [10 in ³ /min] @ 210 bar [3000 psi]
Weight	0.5 kg [1.12 lb]
Cavity	SDC16-4

PERFORMANCE CURVES



MODEL CODE

PTS1 - 16 - V - 0 - 40

Seal Option

Code	Seal Kit
Omit-Buna-N	889634
V-Viton	889638

Housing

Code	Ports	Aluminum Standard duty	Aluminum Heavy duty
0	No housing		
12T	#12 SAE	566411	
6B	3/4" BSP	02-175468	
10H	#10 SAE		876729
12H	#12 SAE		876731
4G	1/2" BSP		876728
6G	3/4" BSP		876730

* Aluminum bodies are to be used for pressures less than 210 bar [3000 psi].

* Additional housings available

Shift Pressure

Code	Bar	[Psi]
40	2.75	[40]
80	5.5	[80]
160	11.0	[160]