

Directional Control Valves

PTS2-20

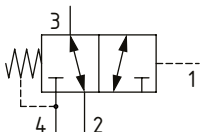
Directional Control Valve, 3-Way, Spool Type, Hydraulic Pilot, Internal Drain

210 bar [3000 psi] • 265 l/min [70 US gpm]

DESCRIPTION AND OPERATION

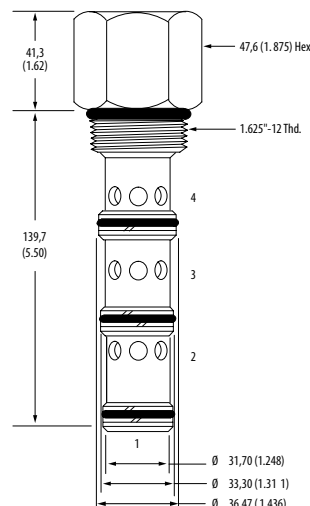
This is a 3-way, spool type, hydraulically piloted directional control valve with an internal drain. In the normal condition, port 2 is connected to port 3 with port 4 blocked. Pilot pressure at port 1 will cause the valve to shift, connecting port 3 to port 4 with port 2 blocked. During the cross-over transition all ports are blocked. Due to the internal hydraulic vent, the pilot pressure required shift the valve is dependent on the pressure in port 4, which would normally be connected to tank.

SCHEMATIC



DIMENSIONS

mm [in]

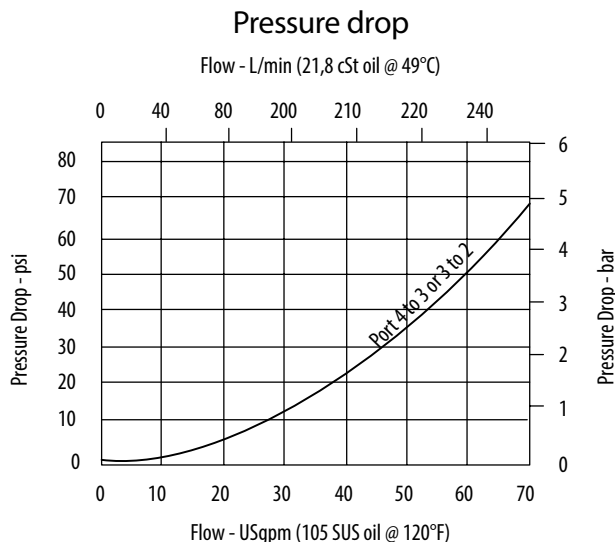


Installation torque
128-155 Nm [95-115 ft lbs]

PERFORMANCE DATA

Rated pressure	210 bar [3000 psi]
Rated flow	265 l/min [70 US gpm]
Leakage	164 ml/min [10 in ³ /min] @ 210 bar [3000 psi]
Weight	0.5 kg [1.12 lb]
Cavity	SDC20-4

PERFORMANCE CURVES



MODEL CODE

PTS2 - 20 - V - 0 - 40

Seal Option

Code	Seal Kit
Omit-Buna-N	565916
V-Viton	889646

Housing

Code	Ports	Aluminum Standard duty	Aluminum Heavy duty
0	No housing		
16T	#16 SAE	566412	
8B	1" BSP	02-175469	
12H	#12 SAE		876745
16H	#16 SAE		876747
6G	3/4" BSP		876744
8G	1" BSP		876746

* Aluminum bodies are to be used for pressures less than 210 bar [3000 psi].

* Additional housings available

Shift Pressure

Code	Bar	[Psi]
40	2.75	[40]
80	5.5	[80]