

Directional Control Valves

PTS3-10

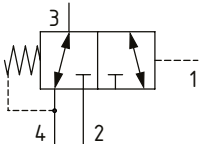
Directional Control Valve, 3-Way, Spool Type, Hydraulic Pilot, Internal Drain

210 bar [3000 psi] • 30 l/min [8 US gpm]

DESCRIPTION AND OPERATION

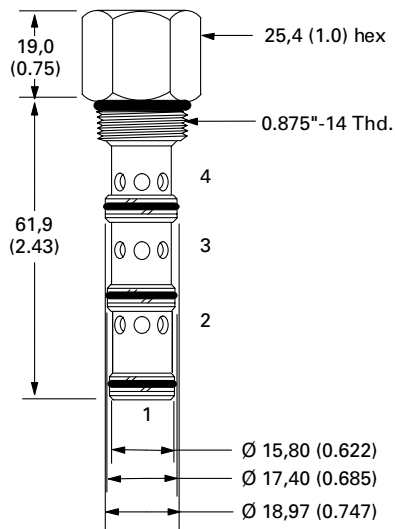
This is a 3-way, spool type, hydraulically piloted directional control valve with an internal drain. In the normal condition, port 3 is connected to port 4 with port 2 blocked. Pilot pressure at port 1 will cause the valve to shift, connecting port 3 to port 2 with port 4 blocked. During the cross-over transition all ports are blocked. Due to the internal hydraulic vent, the pilot pressure required shift the valve is dependent on the pressure in port 4, which would normally be connected to tank.

SCHEMATIC



DIMENSIONS

mm [in]

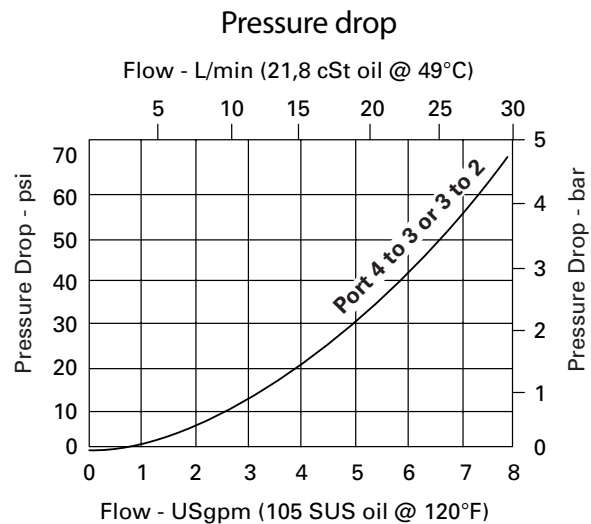


Installation torque
47-54 Nm [35-40 ft. lbs]

PERFORMANCE DATA

Rated pressure	210 bar [3000 psi]
Rated flow	30 l/min [8 US gpm]
Leakage	164 ml/min [10 in ³ /min] @ 210 bar [3000 psi]
Weight	0.5 kg [1.12 lb]
Cavity	SDC10-4

PERFORMANCE CURVES



MODEL CODE

PTS3 - 10 - V - 0 - 40

Seal Option

Code	Seal Kit
Omit-Buna-N	889625
V-Viton	566080

Housing

Code	Ports	Aluminum Standard duty	Aluminum Heavy duty
0	No housing		
3B	3/8" BSP	02-179705	
6T	#6 SAE	02-168235	
2G	1/4" BSP		876709
3G	3/8" BSP		876715
6H	#6 SAE		876708
8H	#8 SAE		876713

* Aluminum bodies are to be used for pressures less than 210 bar [3000 psi].
* Additional housings available

Shift Pressure

Code	Bar	Psi
40	2.75	[40]
80	5.5	[80]
160	11.0	[160]