

Directional Control Valves

PTS3-16

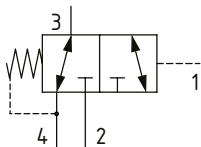
Directional Control Valve, 3-Way, Spool Type, Hydraulic Pilot, Internal Drain

210 bar [3000 psi] • 132 l/min [35 US gpm]

DESCRIPTION AND OPERATION

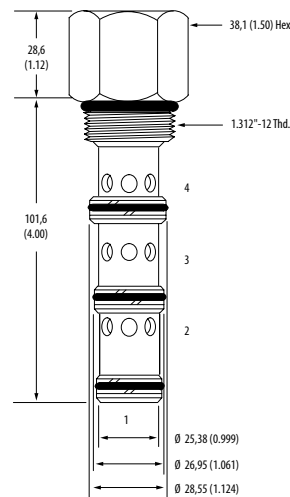
This is a 3-way, spool type, hydraulically piloted directional control valve with an internal drain. In the normal condition, port 3 is connected to port 4 with port 2 blocked. Pilot pressure at port 1 will cause the valve to shift, connecting port 3 to port 2 with port 4 blocked. During the cross-over transition all ports are blocked. Due to the internal hydraulic vent, the pilot pressure required shift the valve is dependent on the pressure in port 4, which would normally be connected to tank.

SCHEMATIC



DIMENSIONS

mm [in]

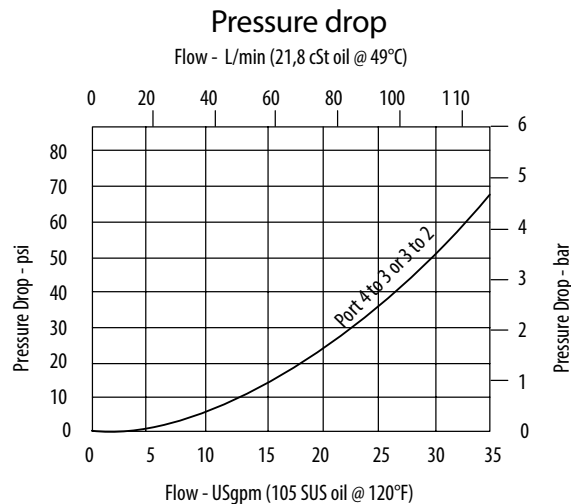


Installation torque
108-122 Nm [80-90 ft. lbs]

PERFORMANCE DATA

Rated pressure	210 bar [3000 psi]
Rated flow	132 l/min [35 US gpm]
Leakage	164 ml/min [10 in ³ /min] @ 210 bar [3000 psi]
Weight	0.5 kg [1.12 lb]
Cavity	SDC16-4

PERFORMANCE CURVES



MODEL CODE

PTS3 - 16 - V - 0 - 40

Seal Option

Code	Seal Kit
Omit-Buna-N	889634
V-Viton	889638

Housing

Code	Ports	Aluminum Standard duty	Aluminum Heavy duty
0	No housing		
12T	#12 SAE	566411	
6B	3/4" BSP	02-175468	
10H	#10 SAE		876729
12H	#12 SAE		876731
4G	1/2" BSP		876728
6G	3/4" BSP		876730

* Aluminum bodies are to be used for pressures less than 210 bar [3000 psi].
* Additional housings available

Shift Pressure

Code	Bar	[Psi]
40	2.75	[40]
80	5.5	[80]
160	11.0	[160]