

# Directional Control Valves

## PTS3-20

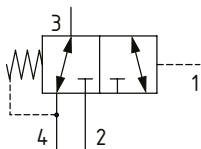
Directional Control Valve, 3-Way, Spool Type, Hydraulic Pilot, Internal Drain

210 bar [3000 psi] • 265 l/min [70 US gpm]

### DESCRIPTION AND OPERATION

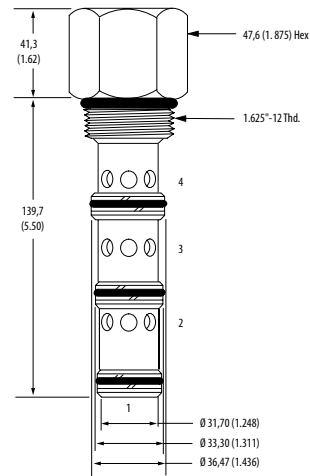
This is a 3-way, spool type, hydraulically piloted directional control valve with an internal drain. In the normal condition, port 3 is connected to port 4 with port 2 blocked. Pilot pressure at port 1 will cause the valve to shift, connecting port 3 to port 2 with port 4 blocked. During the cross-over transition all ports are blocked. Due to the internal hydraulic vent, the pilot pressure required shift the valve is dependent on the pressure in port 4, which would normally be connected to tank.

### SCHEMATIC



### DIMENSIONS

mm [in]

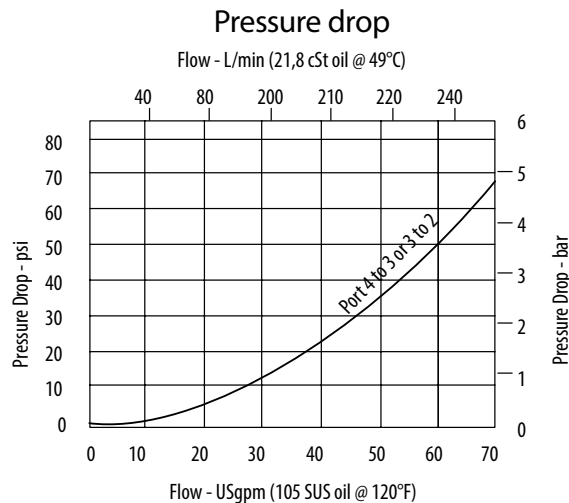


**Installation torque**  
129-155 Nm [95-115 ft lbs]

### PERFORMANCE DATA

<b>Rated pressure</b>	<b>210 bar [3000 psi]</b>
<b>Rated flow</b>	<b>265 l/min [70 US gpm]</b>
<b>Leakage</b>	164 ml/min [10 in <sup>3</sup> /min] @ 210 bar [3000 psi]
<b>Weight</b>	0.5 kg [1.12 lb]
<b>Cavity</b>	SDC20-4

### PERFORMANCE CURVES



### MODEL CODE

**PTS3 - 20 - V - 0 - 40**

#### Seal Option

Code	Seal Kit
<b>Omit</b> -Buna-N	565916
<b>V</b> -Viton	889646

#### Housing

Code	Ports	Aluminum Standard duty	Aluminum Heavy duty
<b>0</b>	No housing		
<b>16T</b>	#16 SAE	566412	
<b>8B</b>	1" BSP	02-175469	
<b>12H</b>	#12 SAE		876745
<b>16H</b>	#16 SAE		876747
<b>6G</b>	3/4" BSP		876744
<b>8G</b>	1" BSP		876746

#### Shift Pressure

Code	Bar	[Psi]
<b>40</b>	2.75	[40]
<b>80</b>	5.5	[80]

\* Aluminum bodies are to be used for pressures less than 210 bar [3000 psi].

\* Additional housings available