

Directional Control Valves

PTS9-8

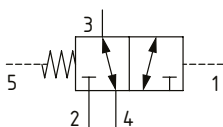
Directional Control Valve, 3-Way, Spool Type, Hydraulic Pilot, External Drain

280 bar [4000 psi] • 19 l/min [5 US gpm]

DESCRIPTION AND OPERATION

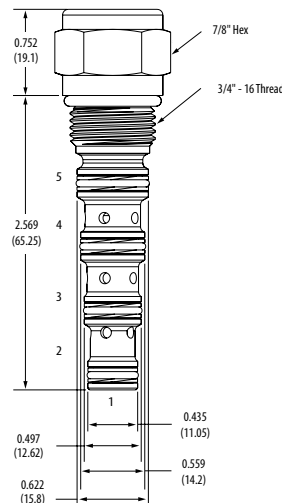
This is a 3-way, spool type, hydraulically piloted directional control valve with an external drain at port 5. In the normal condition, port 3 is connected to port 4 with port 2 blocked. Pilot pressure at port 1 will cause the valve to shift, connecting port 3 to port 2 with port 4 blocked. In the crossover transition all ports are open. Due to the external drain, the pilot pressure required shift the valve is dependent on the pressure in port 5, which would normally be connected to tank.

SCHEMATIC



DIMENSIONS

mm [in]



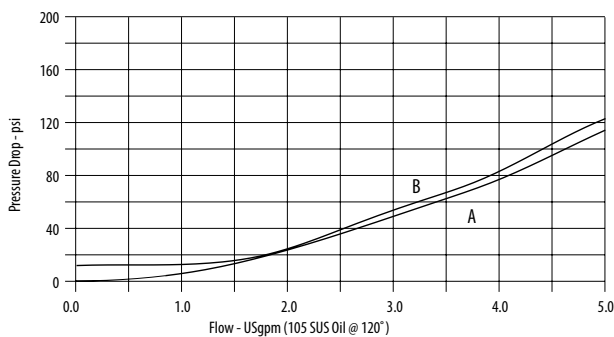
Installation torque
34-41 Nm [25-30 ft lbs]

PERFORMANCE DATA

| | |
|----------------|---|
| Rated pressure | 280 bar [4000 psi] |
| Rated flow | 19 l/min [5 US gpm] |
| Leakage | 164 ml/min [10 in ³ /min] @ 210 bar [3000 psi] |
| Weight | 0.10 kg [0.23 lbs] |
| Cavity | C-8-5S |

PERFORMANCE CURVES

Pressure drop



A-Port 3 to 4 • B-Port 3 to 2

MODEL CODE

PTS9 - 8 - V - 0 - 000 - 080

Seal Option

| Code | Seal kit |
|-------------|-------------|
| Omit-Buna-N | 9900310-001 |
| V-Viton | 9900310-002 |

Housing Material

0-No housing
A-Aluminum
S-Steel

Shift Pressure

| Code | Bar | [Psi] |
|------|------|-------|
| 080 | 5.5 | [80] |
| 160 | 11.0 | [160] |

Housing

| Code | Ports 2,3,4 | Ports 1,5 | Aluminum | Steel |
|------|-------------|-----------|-------------|-------------|
| 000 | No housing | | | |
| 04T | #4 SAE | #4 SAE | 4999357-001 | 4999358-001 |
| 06T | #6 SAE | #6 SAE | 4999357-002 | 4999358-002 |
| 02G | 1/4" BSP | 1/4" BSP | 4999357-003 | 4999358-003 |
| 03G | 3/8" BSP | 1/4" BSP | 4999357-004 | 4999358-004 |

* Aluminum bodies are to be used for pressures less than 210 bar [3000 psi].

* Additional housings available