

Directional Control Valves

PTS9-10

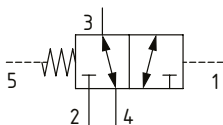
Directional Control Valve, 3-Way, Spool Type, Hydraulic Pilot, External Drain

280 bar [4000 psi] • 38 l/min [10 US gpm]

DESCRIPTION AND OPERATION

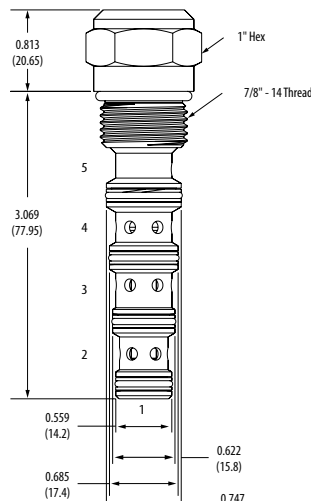
This is a 3-way, spool type, hydraulically piloted directional control valve with an external drain at port 5. In the normal condition, port 3 is connected to port 4 with port 2 blocked. Pilot pressure at port 1 will cause the valve to shift, connecting port 3 to port 2 with port 4 blocked. In the crossover transition all ports are open. Due to the external drain, the pilot pressure required shift the valve is dependent on the pressure in port 5, which would normally be connected to tank.

SCHEMATIC



DIMENSIONS

mm [in]

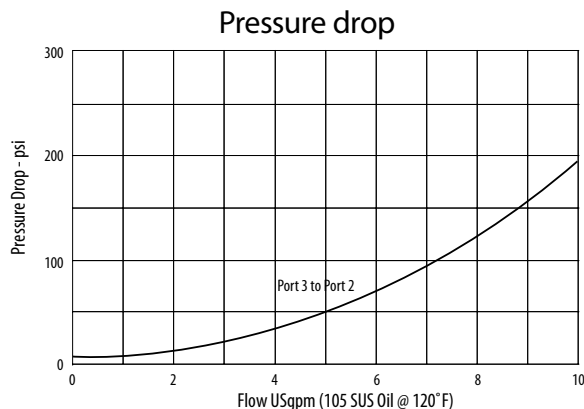


Installation torque
47-54 nm [35-40 ft lbs]

PERFORMANCE DATA

Rated pressure	280 bar [4000 psi]
Rated flow	38 l/min [10 US gpm]
Leakage	164 ml/min [10 in ³ /min] @ 210 bar [3000 psi]
Weight	0.10 kg [0.23 lbs]
Cavity	SDC10-5

PERFORMANCE CURVES



MODEL CODE

PTS9 - 10 - V - 0 - 000 - 080

Seal Option

Code	Seal kit
Omit-Buna-N	9901261-000
V-Viton	9901262-000

Housing Material

0-No housing
A-Aluminum
S-Steel

Shift Pressure

Code	Bar	[Psi]
080	5.5	[80]
100	6.9	[100]
160	11.0	[160]

Housing

Code	Port 1, 2 & 4	Port 1 & 5	Aluminum	Steel
000	No housing			
06T	#6 SAE	#4 SAE	5994133-001	5994134-001
08T	#8 SAE	#4 SAE	5994133-002	5994134-002
04G	1/2" BSP	1/4" BSP	5994133-003	5994134-003

* Aluminum bodies are to be used for pressures less than 210 bar [3000 psi].

* Additional housings available