

Directional Control Valves

PTS9-16

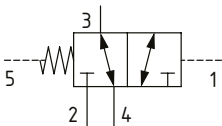
Directional Control Valve, 3-Way, Spool Type, Hydraulic Pilot, External Drain

280 bar [4000 psi] • 150 l/min [40 US gpm]

DESCRIPTION AND OPERATION

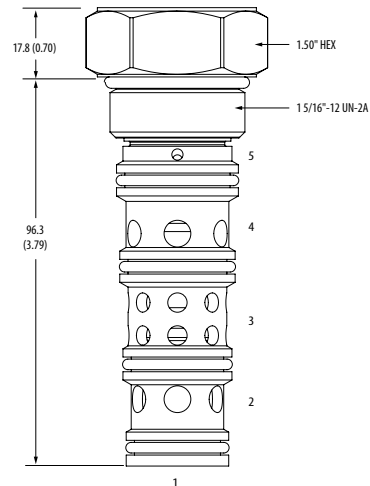
This is a 3-way, spool type, hydraulically piloted directional control valve with an external drain at port 5. In the normal condition, port 3 is connected to port 4 with port 2 blocked. Pilot pressure at port 1 will cause the valve to shift, connecting port 3 to port 2 with port 4 blocked. In the crossover transition all ports are open. Due to the external drain, the pilot pressure required shift the valve is dependent on the pressure in port 5, which would normally be connected to tank.

SCHEMATIC



DIMENSIONS

mm [in]

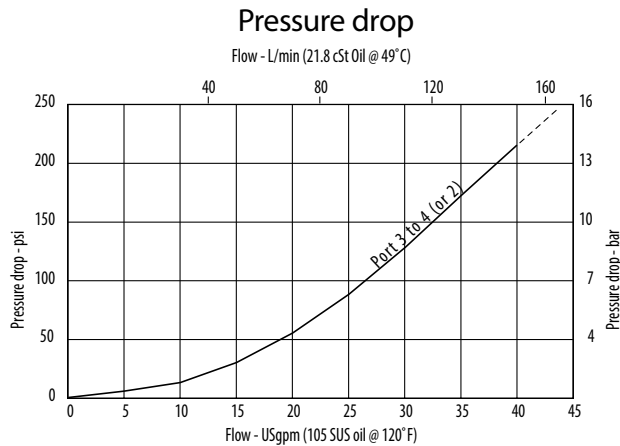


Installation torque
 A-108-122 Nm (80-90 ft lbs)
 S-136-149 Nm (100-110 ft lbs)

PERFORMANCE DATA

Rated pressure	280 bar [4000 psi]
Rated flow	150 l/min [40 US gpm]
Leakage	164 ml/min [10 in ³ /min] @ 210 bar [3000 psi]
Weight	0.47 kg [1.05 lb]
Cavity	C-16-5S

PERFORMANCE CURVES



MODEL CODE

PTS9 - 16 - U - A - 16T - 030

Seal Option

Code	Seal Kit
U-Urethane	202915-922

Housing Material

- 0-No housing
- A-Aluminum
- S-Steel

Housing

Code	Port 2, 3 & 4	Port 1 & 5	Aluminum	Steel
000	No Housing			
16T	#16 SAE	#4 SAE	4994880-002	4994881-002
08G	1" BSP	1/4" BSP	4994880-004	4994881-004

* Aluminum bodies are to be used for pressures less than 210 bar [3000 psi].

* Additional housings available

Shift Pressure

Code	Bar	[Psi]
030	2	[30]
050	3.5	[50]
070	4.8	[70]