

Directional Control Valves

PTS11-10

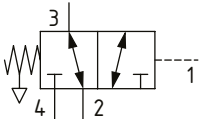
Directional Control Valve, 3-Way, Spool Type, Hydraulic Pilot, Atmospheric Vent

350 bar [5000 psi] • 30 l/min [8 US gpm]

DESCRIPTION AND OPERATION

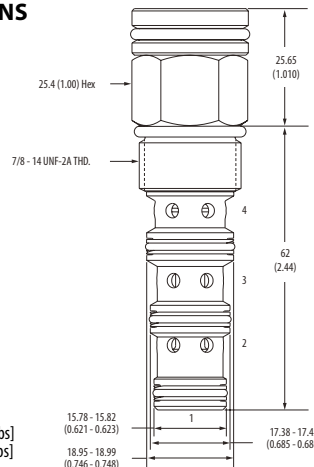
This is a 3-way, spool type, hydraulically piloted directional control valve with an atmospheric vent. In the normal condition, port 2 is connected to port 3 and port 4 is blocked. Pilot pressure at port 1 will cause the valve to shift, connecting port 3 to port 4 with port 2 blocked. During the cross-over transition, all ports are blocked. This valve can be used as a selector valve when combined with a pilot solenoid valve.

SCHEMATIC



DIMENSIONS

mm [in]



Installation torque

A-47-54 Nm [35-40 ft. lbs]
S-68-75 Nm [50-55 ft. lbs]

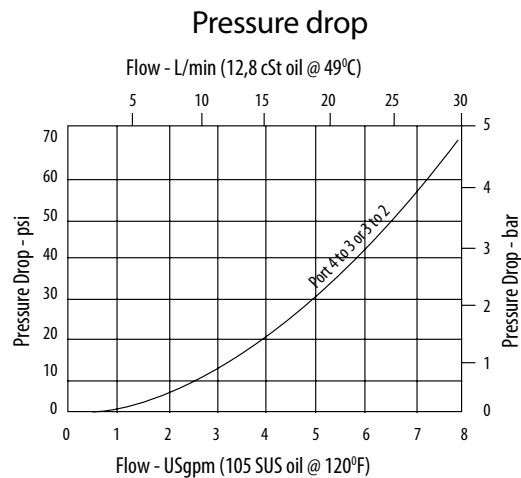
15.70 - 15.82
(0.621 - 0.623)
18.95 - 18.99
(0.746 - 0.748)

17.38 - 17.42
(0.685 - 0.686)

PERFORMANCE DATA

Rated pressure	350 bar [5000 psi]
Rated flow	30 l/min [8 US gpm]
Leakage	210 ml/min [13 in ³ /min] @ 210 bar [3000 psi]
Weight	0.14 kg [0.32 lb]
Cavity	SDC10-4

PERFORMANCE CURVES



MODEL CODE

PTS11 - 10 - V - A - 2G - 40

Seal Option

Code	Seal Kit
Omit-Buna-N	889625
V-Viton	566080

Housing Material

Omit-No housing
A-Aluminum
S-Steel

Shift Pressure

Code	Bar	[Psi]
40	2.75	[40]
80	5.5	[80]
160	11.0	[160]

Housing

Code	Ports	Aluminum Heavy duty	Steel
0	No housing		
2G	1/4" BSP	02-185804	02-175139
3G	3/8" BSP	02-185805	02-175140
6H	#6 SAE	02-185802	
8H	#8 SAE	02-185803	
6T	#6 SAE		02-175137
8T	#8 SAE		02-175138

* Aluminum bodies are to be used for pressures less than 210 bar [3000 psi].

* Additional housings available