

Directional Control Valves

PTS11-16

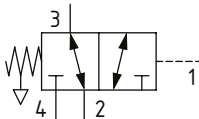
Directional Control Valve, 3-Way, Spool Type, Hydraulic Pilot, Atmospheric Vent

350 bar [5000 psi] • 132 l/min [35 US gpm]

DESCRIPTION AND OPERATION

This is a 3-way, spool type, hydraulically piloted directional control valve with an atmospheric vent. In the normal condition, port 2 is connected to port 3 and port 4 is blocked. Pilot pressure at port 1 will cause the valve to shift, connecting port 3 to port 4 with port 2 blocked. During the cross-over transition, all ports are blocked. This valve can be used as a selector valve when combined with a pilot solenoid valve.

SCHEMATIC



PERFORMANCE DATA

Rated pressure	350 bar [5000 psi]
Rated flow	132 l/min [35 US gpm]
Leakage	250 ml/min [15 in ³ /min] @ 350 bar [5000 psi]
Weight	0.5 kg [1.12 lb]
Cavity	SDC16-4

MODEL CODE

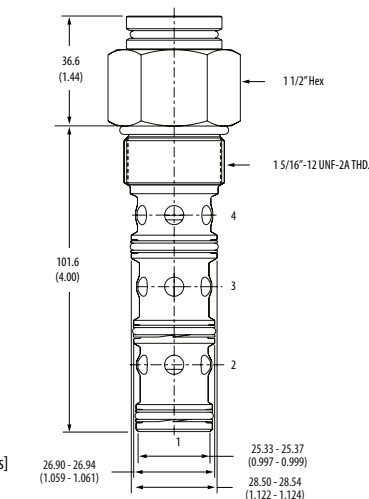
PTS11 - 16 - V - A - 6B - 80

Seal Option

Code	Seal Kit
Omit-Buna-N	889634
V-Viton	889638

Housing Material

Omit-No housing
A-Aluminum
S-Steel



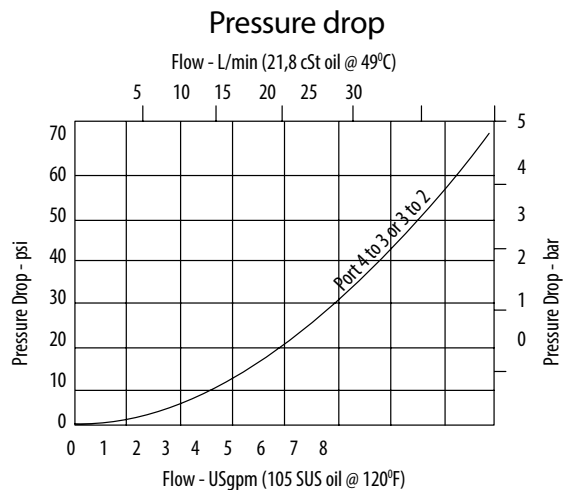
DIMENSIONS

mm [in]

Installation torque

A-108-122 Nm [80-90 ft. lbs]
S-136-149 Nm [100-110 ft. lbs]

PERFORMANCE CURVES



Shift Pressure

Code	Bar	[Psi]
80	5.5	[80]
160	11.0	[160]

Housing

Code	Ports	Aluminum Standard duty	Aluminum Heavy duty	Steel
0	No housing			
10T	#10 SAE			02-175141
12T	#12 SAE	566411		02-175142
6B	3/4" BSP	02-175468		
10H	#10 SAE		876729	
12H	#12 SAE		876731	
4G	1/2" BSP		876728	02-175143
6G	3/4" BSP		876730	02-175144

* Aluminum bodies are to be used for pressures less than 210 bar [3000 psi].

* Additional housings available