

Directional Control Valves

PTS17-10

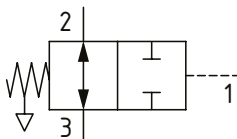
Directional Control Valve, 2-Way, Spool Type, Hydraulic Pilot, Atmospheric Vent

350 bar [5000 psi] • 30 l/min [8 US gpm]

DESCRIPTION AND OPERATION

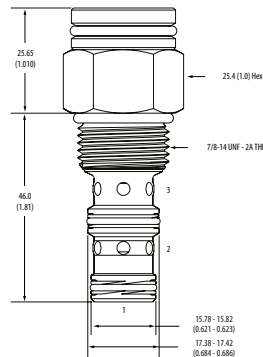
This is a 2-way, hydraulically piloted valve with an atmospheric vent. It is normally open between ports 2 and 3 that shift to the closed position when the pilot pressure at port 1 overcomes the opposing spring. Due to the atmospheric vent, the pilot pressure required to shift the valve is independent of the pressure in the line between port 2 and port 3.

SCHEMATIC



DIMENSIONS

mm [in]

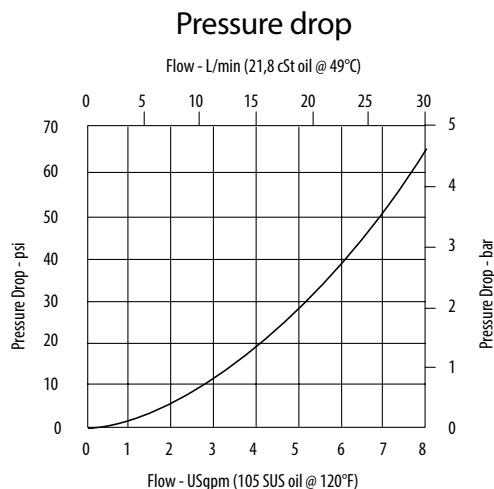


Installation torque
 A-47-54 Nm [35-40 ft. lbs]
 S-68-75 Nm [50-55 ft. lbs]

PERFORMANCE DATA

Rated pressure	350 bar [5000 psi]
Rated flow	30 l/min [8 US gpm]
Leakage	210 ml/min [13 in ³ /min] @ 350 bar [5000 psi]
Weight	0.10 kg [0.23 lbs]
Cavity	SDC10-3

PERFORMANCE CURVES



MODEL CODE

PTS17 - 10 - V - A - 2G - 40

Seal Option

Code	Seal kit
B	Buna-N 889624
V	Viton 889628

Housing Material

Omit-No housing
 A-Aluminum
 S-Steel

Shift Pressure

Code	Bar	Psi
40	2.75	[40]
80	5.5	[80]
160	11	[160]

Housing

Code	Port size	Aluminium Standard duty	Aluminium Heavy duty	Steel
0	No Housing			
3B	3/8" BSP	02-173358		
6T	#6 SAE	566162		02-175124
8T	#8 SAE			02-175125
2G	1/4" BSP		876705	02-175127
3G	3/8" BSP		876714	02-175128
6H	#6 SAE		876704	
8H	#8 SAE		876711	

* Aluminum bodies are to be used for pressures less than 210 bar [3000 psi].

* Additional housings available