

Directional Control Valves

PTS17-12

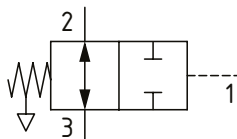
Directional Control Valve, 2-Way, Spool Type, Hydraulic Pilot, Atmospheric Vent

350 bar [5000 psi] • 114 l/min [30 US gpm]

DESCRIPTION AND OPERATION

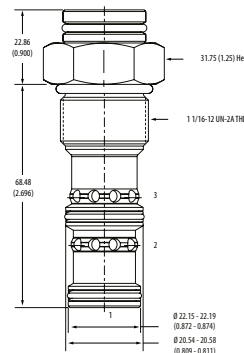
This is a 2-way, hydraulically piloted valve with an atmospheric vent. It is normally open between ports 2 and 3 that shift to the closed position when the pilot pressure at port 1 overcomes the opposing spring. Due to the atmospheric vent, the pilot pressure required to shift the valve is independent of the pressure in the line between port 2 and port 3.

SCHEMATIC



DIMENSIONS

mm [in]

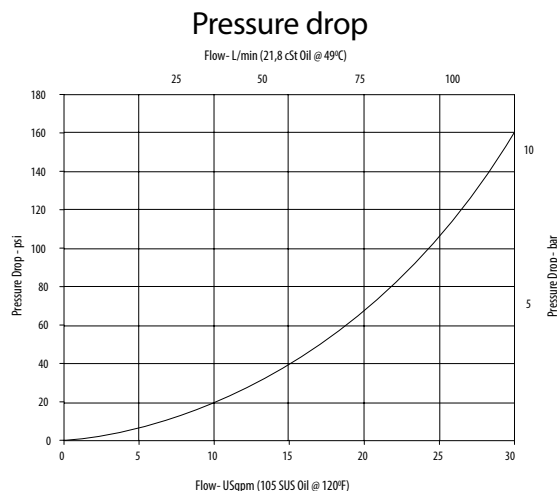


Installation torque
 A-81-95 Nm [60-70 ft. lbs]
 S-102-115 Nm [75-85 ft. lbs]

PERFORMANCE DATA

| | |
|-----------------------|---|
| Rated pressure | 350 bar [5000 psi] |
| Rated flow | 114 l/min [30 US gpm] |
| Leakage | 210 ml/min [13 in ³ /min] @ 350 bar [5000 psi] |
| Weight | 0.25 kg [0.55 lbs] |
| Cavity | C-12-3 |

PERFORMANCE CURVES



MODEL CODE

PTS17 - 12 - V - A - 4G - 80

Seal Option

| Code | Seal kit |
|------------------|----------|
| B -Buna-N | 9900171 |
| V -Viton | 9900172 |

Housing Material

Omit-No housing
A-Aluminum
S-Steel

Shift Pressure

| Code | Bar | Psi |
|------------|------|-------|
| 80 | 5.5 | [80] |
| 120 | 8.3 | [120] |
| 160 | 11.0 | [160] |

Housing

| Code | Port size | Aluminium | Steel |
|------------|------------|-----------|-----------|
| 0 | No Housing | | |
| 4G | 1/2" BSP | 02-161817 | 02-169815 |
| 6G | 3/4" BSP | 02-161816 | 02-169814 |
| 10H | #10 SAE | 02-160642 | |
| 12H | #12 SAE | 02-160646 | |
| 10T | #10 SAE | | 02-161070 |
| 12T | #12 SAE | | 02-169816 |

* Aluminum bodies are to be used for pressures less than 210 bar [3000 psi].
 * Additional housings available