

Directional Control Valves

CP712-7

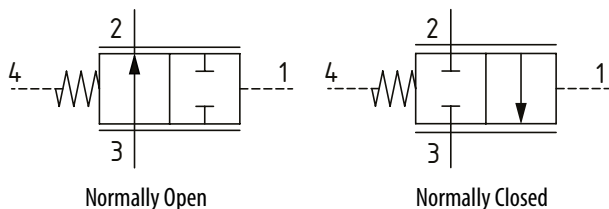
Directional Control Valve, 2-Way, Spool Type, Hydraulic Pilot, External Drain, Proportional Flow Control

210 bar [3000 psi] • 220 l/min [58 US gpm]

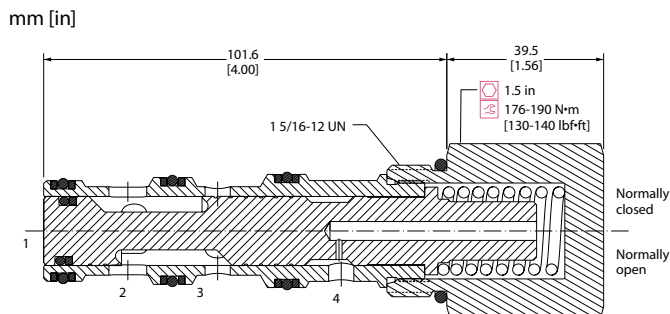
DESCRIPTION AND OPERATION

This is a 2-way, spool type, hydraulically piloted directional control valve with internal hydraulic vent. It is available in normally open or normally closed configurations between ports 2 and 3 that shift when pilot pressure is applied to port 1. Due to the external drain, the pilot pressure required shift the valve is dependent on the pressure in port 4, which would normally be connected to tank. This valve is ideal to use as a proportional flow control when combined with a proportional pressure reducing valve.

SCHEMATIC



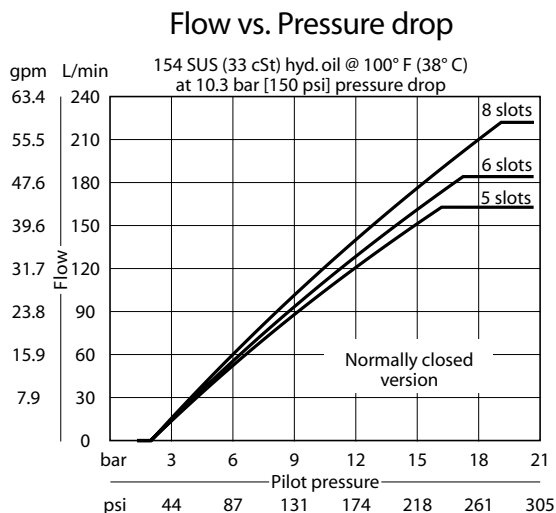
DIMENSIONS



PERFORMANCE DATA

Rated pressure	210 bar [3000 psi]
Rated flow @ 10 bar [150 psi]	220 l/min [58 US gpm]
Weight	0.61 kg [1.34 lb]
Cavity	SDC16-4

PERFORMANCE CURVES



MODEL CODE

CP712 - 7 - B - 12S - C - 5 - S4

Seal Option

Code	Seal kit
B-Buna-N	120025
V-Viton	120026

Housing

Code	Ports & Material	Housing Model Code
0	No Housing	
6B	AL, 3/4 BSP	CP16-4-6B
8B	AL, 1 BSP	CP16-4-8B
12S	AL, #12 SAE	CP16-4-12S
16S	AL, #16 SAE	CP16-4-16S

* Aluminum bodies are to be used for pressures less than 210 bar [3000 psi].
* Additional housings available

Spool Seal Option

S3-No Seal
S4-Seal included

Sleeve Option

5-5 slots
6-6 slots
8-8 slots

Spool Configuration

O-Normally Open
C-Normally Closed