

# Directional Control Valves

## CP722-11

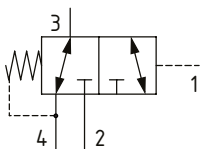
Directional Control Valve, 3-Way, Spool Type, Hydraulic Pilot, Internal Drain

450 bar [6500 psi] • 125 l/min [33 US gpm]

### DESCRIPTION AND OPERATION

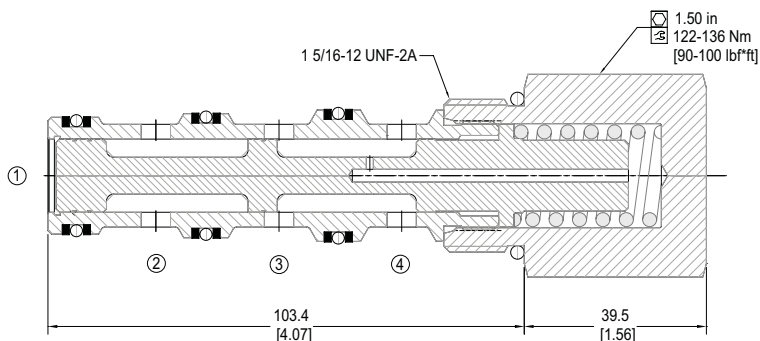
This is a 3-way, spool type, hydraulically piloted directional control valve with an internal drain. In the normal condition, port 3 is connected to port 4 with port 2 blocked. Pilot pressure at port 1 will cause the valve to shift, connecting port 3 to port 2 with port 4 blocked. During the cross-over transition all ports are blocked. Due to the internal hydraulic vent, the pilot pressure required shift the valve is dependent on the pressure in port 4, which would normally be connected to tank.

### SCHEMATIC



### DIMENSIONS

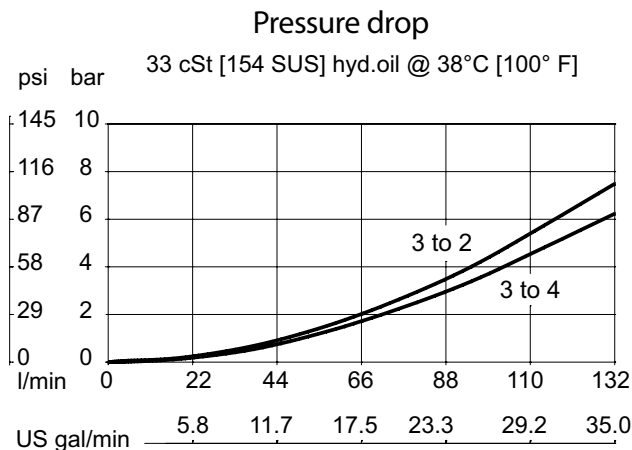
mm [in]



### PERFORMANCE DATA

Rated pressure	450 bar [6500 psi]
Rated flow @ 7 bar [100 psi]	125 l/min [33 US gpm]
Leakage	164 ml/min [10 in <sup>3</sup> /min] @ 210 bar [3000 psi]
Weight	0.61 kg [1.34 lb]
Cavity	SDC16-4

### PERFORMANCE CURVES



### MODEL CODE

**CP722 - 11 - U - 12S - 040**

#### Seal Option

Code	Seal kit
U-Urethane	120677

#### Housing

Code	Ports & Material	Housing Model Code
0	No Housing	
12S	Aluminium, #12 SAE	CP16-4-12S
16S	Aluminium, #16 SAE	CP16-4-16S
S12S	Steel, #12 SAE	223494
S16S	Steel, #16 SAE	11129057

\* Aluminum bodies are to be used for pressures less than 210 bar [3000 psi].

\* Additional housings available

#### Shift Pressure

Code	Bar	[Psi]
040	2.8	[40]
080	5.5	[80]