

Flow Control Valves

2CFRC60

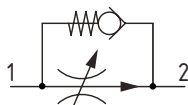
Flow Control, Fully Adjustable, Pressure Compensated, Restrictive Type with Reverse Free Flow

350 bar [5000 psi] • 60 l/min [16 US gpm]

DESCRIPTION AND OPERATION

This is a fully adjustable, restrictive type, pressure compensated flow control valve from port 1 to 2 with a reverse free flow check from port 2 to 1. The flow from port 2 will remain constant regardless of the pressure difference across the valve. Flow enters at port 1 and passes across an adjustable orifice in the spool, which creates a pressure drop. This causes the spool to move back against the spring, which then restricts the outlet flow. Flow from port 2 to 1 passes freely across an integral check valve.

SCHEMATIC



PERFORMANCE DATA

Rated pressure	350 bar [5000 psi]
Rated flow	60 l/min [16 US gpm]
Flow range	4-60 l/min [1-16 US gpm]
Weight	0.29 kg [0.64 lb]
Cavity	A7447

MODEL CODE

2CFRC65 - P - 4W - 4 - S - 377 - 30

Basic Code

2CFRC60 - No housing
2CFRC65 - Cartridge and housing

Housing

Code	Ports	Aluminum	Steel
Omit	No Housing		
4W	1/2" BSP	B7418	B13663
8T	#1/2 SAE	B10712	B11565

* Aluminum bodies are to be used for pressures less than 210 bar [3000 psi].
* Additional housings available

Flow Range

Code	l/min	US gpm
4	4-40	[1.0-10.5]
Standard Setting	30	[7.9]
6	6-60	[1.6-15.9]
Standard Setting	40	[10.5]

Adjustment Option

P - External
R - Knob

Flow Setting

Code - Flow in l/min
Specify in 1.0 lpm increments within flow range
Example

Code	l/min	[US gpm]
30	30	7.9

Housing Material

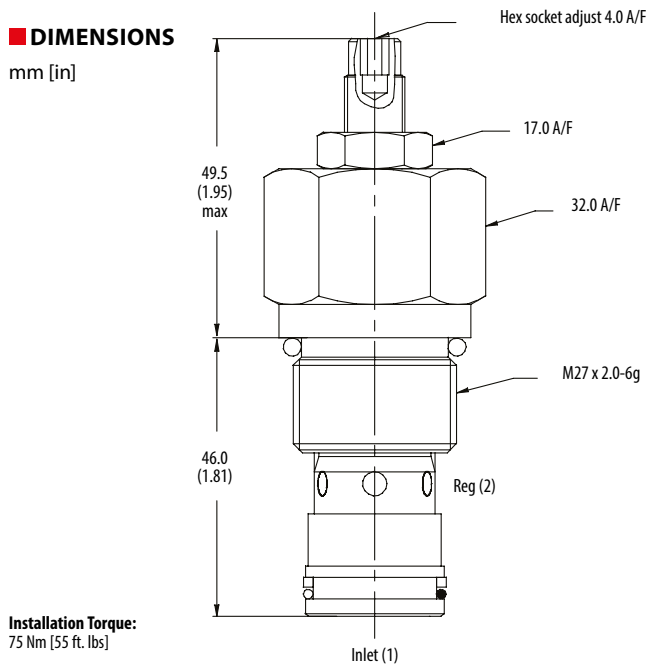
Omit - Aluminum/No housing
377 - Steel

Seal Option

Code	Seal Kit
S - Buna-N	SK578
SV - Viton	SK578V

DIMENSIONS

mm [in]



Installation Torque:
75 Nm [55 ft. lbs]

PERFORMANCE CURVES

