

# Flow Control Valves

## FAR1-16

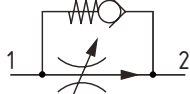
Flow Control, Fully Adjustable, Pressure Compensated, Restrictive Type with Reverse Free Flow

350 bar [5000 psi] • 114 l/min [30 US gpm]

### DESCRIPTION AND OPERATION

This is a fully adjustable, restrictive type, pressure compensated flow control valve from port 1 to 2 with a reverse free flow check from port 2 to 1. The flow from port 2 will remain constant regardless of the pressure difference across the valve. Flow enters at port 1 and passes across an adjustable orifice in the spool, which creates a pressure drop. This causes the spool to move back against the spring, which then restricts the outlet flow. Flow from port 2 to 1 passes freely across an integral check valve.

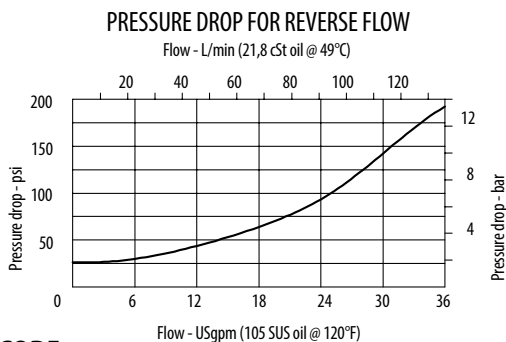
### SCHEMATIC



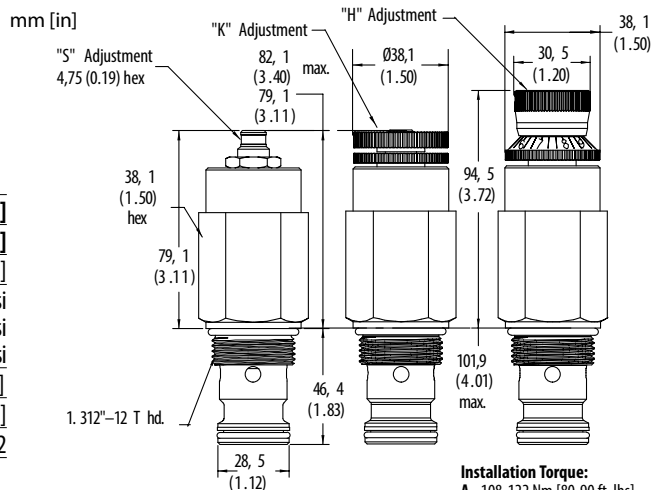
### PERFORMANCE DATA

Rated pressure	350 bar [5000 psi]
Rated flow	114 l/min [30 US gpm]
Flow range	3.8-114 l/min [1.0-30 US gpm]
Flow accuracy	3.8-15.1 l/min [1.0-4.0 US gpm] ±30% @5000 psi 5.1-30.3 l/min [above 4.0-8.0 US gpm] ±20% @5000 psi 30.3-113.6 l/min [above 8.0-30 US gpm] ±10% @5000 psi
Reverse Check Crack Pressure	1.7 bar [25 psi]
Weight	0.67 kg [1.48 lb]
Cavity	SDC16-2

### PERFORMANCE CURVES

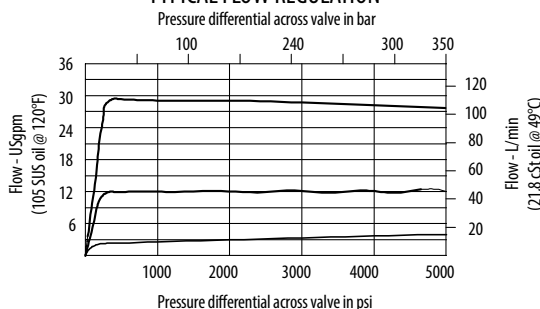


### DIMENSIONS



**Installation Torque:**  
A - 108-122 Nm [80-90 ft. lbs]  
S - 136-149 Nm [100-110 ft. lbs]

### TYPICAL FLOW REGULATION



### MODEL CODE

**FAR1 - 16 - V - H - A - 4G - 10.0**

#### Seal Option

Code	Seal Kit
Omit-Buna - N	565810
V-Viton	889609

#### Adjustment Option

H - Calibrated Knob  
K - Knob  
S - External

#### Housing Material

Omit - No housing  
A - Aluminium  
S - Steel

#### Flow Setting

Code - Flow in US gpm  
Omit - Set at 10 US gpm  
Specify in 0.5 gpm increments within flow range  
Example

Code	l/min	[US gpm]
10.0	38.0	10.0

#### Housing

Code	Ports	Aluminium Standard duty	Aluminium Heavy duty	Steel Heavy duty
Omit	No housing			
4G	1/2" BSP	-	876716	02-175106
6B	3/4" BSP	02-175463	-	-
6G	3/4" BSP	-	876718	02-175107
10T	#10 SAE	-	-	-
10H	#10 SAE	-	876717	02-175104
12T	#12 SAE	566149	-	-
12H	#12 SAE	-	566113	02-175105

\* Aluminum bodies are to be used for pressures less than 210 bar [3000 psi].

\* Additional housings available