

Flow Control Valves

PFR2-10

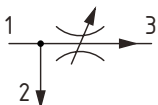
Flow Control, Partially Adjustable, Pressure Compensated, Priority Type

210 bar [3000 psi] • 38 l/min [10 US gpm]

DESCRIPTION AND OPERATION

This is a partially adjustable, priority type, pressure compensated flow control valve, where the flow from port 3 will remain constant regardless of the pressure difference across the valve, while excess flow passes from port 1 to 2. Flow enters at port 1 and passes across a fixed orifice in the spool, which creates a pressure drop. This causes the spool to move back against the spring, which then restricts the outlet flow. Port 1 then opens to port 2 to allow excess flow to pass. The regulated flow will always take priority and remains constant if the working pressure is higher in either port 2 or port 3.

SCHEMATIC



PERFORMANCE DATA

Rated pressure	210 bar [3000 psi]
Rated flow	38 l/min [10 US gpm]
Max inlet flow	60 l/min [15 US gpm]
Flow range	0.4-37.8 l/min
	0.4–1.9 l/min [0.1–0.49 US gpm] ±20%
Flow accuracy	1.9–7.5 l/min [0.5–1.99 US gpm] ±15%
	7.6–37.8 l/min [2.0–10.0 US gpm] ±10%
Weight	0.25 kg [0.54 lb]
Cavity	SDC10-3

MODEL CODE

PFR2 - 10 - V - C - 0 - 1.0

Seal Option

Code	Seal Kit
Omit -Buna - N	565804
V -Viton	889599

Adjustment Option

C - Tamper Resistant
K - Knob
S - External

Flow Setting

Code - Flow in US gpm
 Specify in 0.1 gpm increments within flow range
 Example

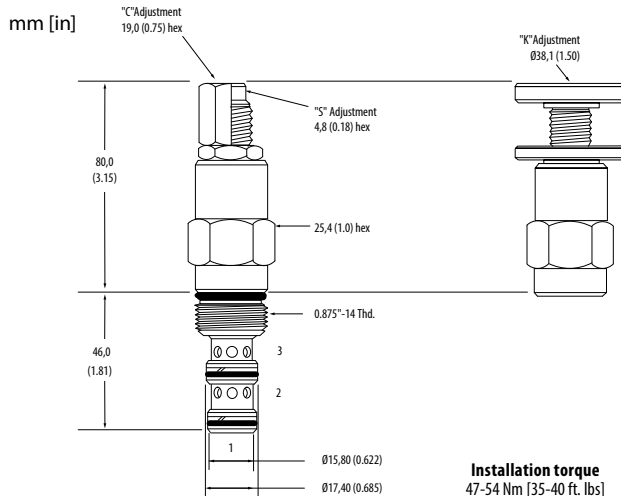
Code	l/min	[US gpm]
1.0	4.0	1.0

Housing

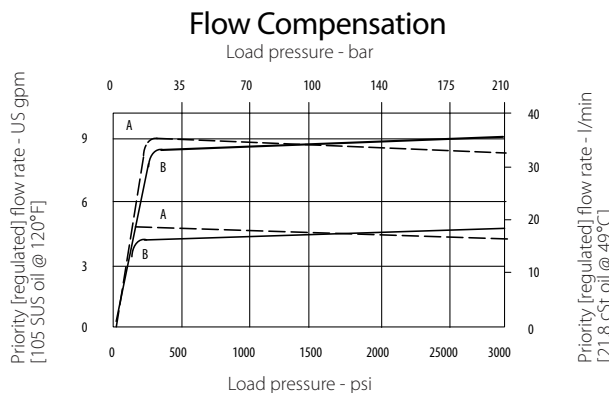
Code	Ports	Aluminium Standard duty	Aluminium Heavy duty
0	No housing	-	-
3B	3/8" BSP	02-173358	-
6T	#6 SAE	566162	-
2G	1/4" BSP	-	876705
3G	3/8" BSP	-	876714
6H	#6 SAE	-	876704
8H	#8 SAE	-	876711

* Aluminium bodies are to be used for pressures less than 210 bar [3000 psi].
 * Additional housings available

DIMENSIONS



PERFORMANCE CURVES



A - Port 3, priority (regulated) outlet pressurized
B - Port 2, bypass outlet pressurized