

Installation Guide

Electronic Heat Cost Allocator SonoHCA

1 Specification

1.1 General Description

1.1.1 Type

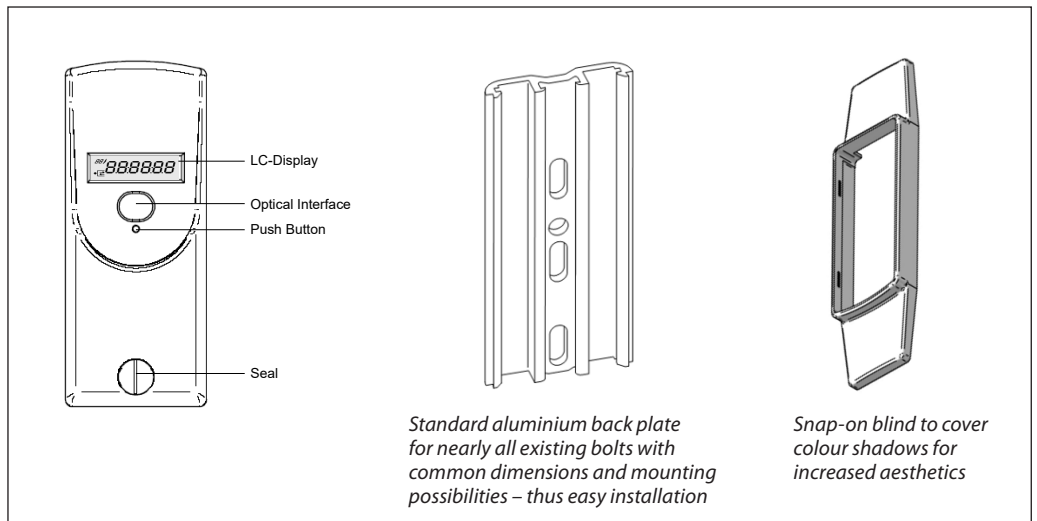


The electronic heat cost allocators **SonoHCA** operate with the double sensor principle. The device has been developed and approved in accordance with the European Standard **EN 834:2013**.

1.1.2 Design

The heat cost allocator consists of a microprocessor, a lithium battery, two temperature sensors, a heat conducting aluminium back plate, a multi-functional display and a plastic housing. The measuring circuit consists of the temperature sensors, the analogue-digital

conversion, the reference resistance for standardising the measuring transformation and the microprocessor for accessing the radiator heat output. During each measuring the circuit tolerances are eliminated with a reference resistance and the heat cost allocator carries out an automatic self-test.



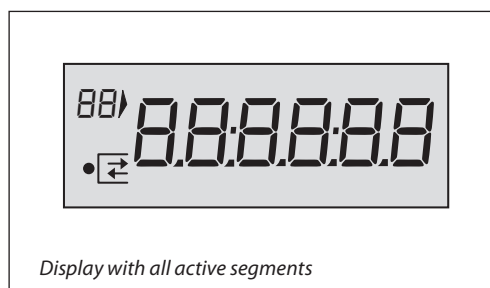
1.1.3 Characteristics

- Measuring by two temperature sensors, radiator and ambient temperature sensor (NTC-resistor).
- Unit scale or product scale.
- Recording of cumulated heat consumption on the annual set day.
- Recording of 144 monthly values and 18 half monthly values for cumulated heat consumption.
- Recording of 18 monthly values for the maximum radiator temperature.
- Optical interface for the readout of the data and programming
- The radio module comprises a unidirectional radio transmitter.
Two telegrams: short telegram, OMS compliant and long telegram for Walk-by reading.
- User-friendly operation by push button.
- 6-digit and high-contrast LCD display.
- Automatic commissioning during the mounting on the aluminium back plate (available when ordering).
- Check code for postcard mail-in method
- Possibility to connect a remote sensor on each version of heat cost allocator. The remote sensor will be automatically detected by the heat cost allocator.
- Remote sensor version with 2 m cable.
- Standard aluminium back plate for nearly all existing bolts with common dimensions and installation possibilities – thus easy installation (no cutting and welding of bolts necessary).
- Snap-on blind to cover colour shadows for increased aesthetics.
- Safe operation and fraud/manipulation detection.
- Lithium battery with a capacity of up to 10+1 year.
- Meets EN 834:2013.

1.1.4 Display

The heat cost allocator has a LCD-display with 6 large main digits on the right and 2 smaller digits on the left as well as two special symbols and one communication indicator. The main digits are separated by four decimal points. Please find the display segments:

Normally, the heat cost allocators are supplied with switched-off LCD-display. On request, the heat cost allocators can also be supplied with permanent LCD- display.



1.1.5 Electronics

The device has an electrical circuitry with an 8-Bit-CMOS-micro controller of the latest generation STM8L with extremely low current consumption operating at a voltage as from 1.8 V.

The temperature measuring circuit with automatic self-calibration measures the discharging time of a capacitor. The accuracy of the measuring circuit is independent of the supply voltage.

For SonoHCA it is possible to plug the connector of the remote sensor to an interface inside the heat cost allocator. Refer to chapter 2.3 Mounting the Remote Sensor.

Once equipped with a remote sensor, the heat cost allocator will only work for an application with remote sensor.

Remote sensor version with 2 m cable.

1.1.6 Optical Interface

With a standardised optical probe the consumption and configuration values can be transferred directly to a computer. All consumption values can be readout over the optical interface and over radio. The data are

transmitted in M-bus-format acc. to EN136757-3. Authorised personnel can alter the configuration of the device over the optical interface with an optical probe.

1.1.7 Radio Transmission wM-Bus

The radio heat cost allocator features a transmitter circuit in the 868 MHz band with integrated antenna.
This radio module comprises a unidirectional radio transmitter which is used to transfer data according to the wM-Bus (EN 13757-4) radio

communication protocol and in compliance with the OMS (Open Metering System) Release V3.0.1.

- Please refer to chapter **1.7.4 Operation Mode for Radio wM-Bus (SonoHCA)** for the radio reading range.

1.2 Operating mode

1.2.1 Cycle Time

SonoHCA operate in a cycle of 4 minutes. Most of the time, the device is in sleeping mode. Every 4 minutes the device is set into operation and operates according to the adjoining diagram.

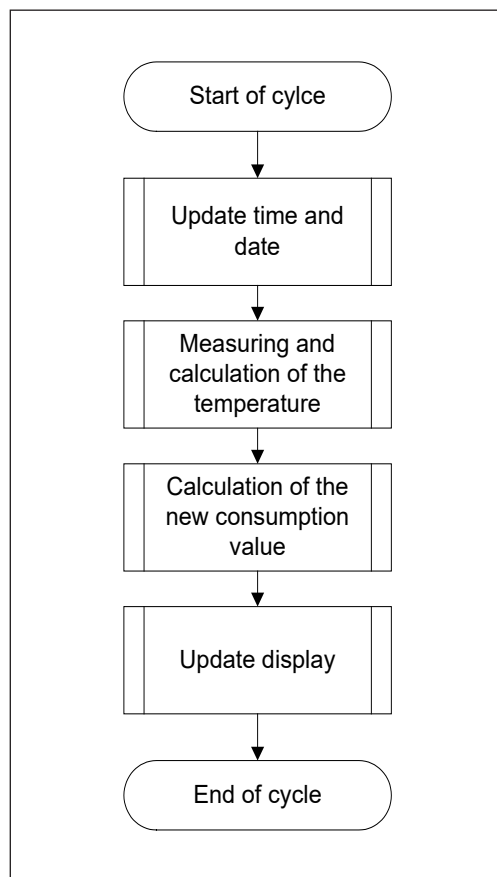
The clock-pulse generator is a counter which is completely independent from the rest of the program. This counter is designed in a way so that it is impossible to stall the cycle or to skip one or more cycles.

Each cycle follows the adjoining diagram. The measuring and calculating processes are explained in detail later.

The tasks carried out during one cycle are taking approx. 100 ms. This means that the device is in sleeping mode more than 99.8 % of the time. It can be set into operation between two cycles over the optical probe or by pushing the button. In this case it carries out the requested task and then returns to sleeping mode.

In case an optical probe is connected or the button is pushed during the course of the cycle, the respective value is readout at the end of the cycle.

The button can be pushed for an indefinite period of time and the optical probe can be left in its position since the normal function of the device is not impaired by an influence from outside.



1.2.2 Double Sensor

For the double sensor version basically the same specifications apply as for the single sensor version with start sensor. However, for calculating the room temperature the

real temperature, measured by the ambient temperature sensor (corrected via the corresponding radiator-dependent „K_{air}-value“), is used as the basis.

1.2.2.1 Heat Accumulation Mode

In order to avoid faulty measuring due to heat accumulation (e.g. in case the radiator is hidden by panels), the device switches from a defined ambient temperature (e.g. 28 °C) to the one

sensor mode and calculates with an ambient temperature of 20 °C.

1.2.3 Comparison of the Measuring Principles

Double sensor measuring principle

For heating systems with $t_{m, min} \geq 35 \text{ }^\circ\text{C}$
 The heat cost allocator calculates with a variable reference temperature $T_{air \text{ temperature}}$

Application:
 Double sensor devices are used in areas where precise measuring of the ambient temperature is necessary and/or in low temperature heating systems.

Radiators which are covered or blocked by fixtures are detected automatically by the double sensor system which then switches over internally to the single sensor mode.

Within one billing unit, only one measuring principle (either single sensor measuring principle with start sensor or double sensor measuring principle) can be used. Mixed fittings or the use of different types of devices in the same billing unit is therefore also not allowed.

The processes for determining the K-value for the single sensor device with start sensor and the double sensor device are identical. It is only the measuring principle that is different.

1.2.4 Temperature Measurement and Calculation

The temperature is measured with an NTC – resistor. For the resistance measurement the discharging time of the capacitor is measured. The measurement is carried out as follows:

1.2.4.1 Measuring of a Resistor, Principle

1. Charging of the capacitor
2. Discharging of the capacitor through the resistance which is to be measured. At the same time a 16+1 bit-timer starts with the discharge to measure the discharging time
3. As soon as the voltage on the capacitor terminals reaches a certain value, an interrupt is induced and the timer stops. At the same time the discharging of the capacitor is stopped as well.

After the three mentioned stages, the timer provides a 16-bit-value which corresponds to the discharging time of the capacitor through the resistance which is to be measured. In case the resistance is known (reference resistance), the constant ratio between discharging time and resistance can be assessed.

1.2.4.2 Calculation of the Value of an Unknown Resistance (e.g. sensor resistance)

The capacitor C is loaded at constant current. The interrupt at the end of the discharge is triggered by the same threshold voltage (a fraction of the discharge voltage). If these two conditions are met, the discharge time is directly proportional to the resistance. With a reference resistance R_{ref} whose exact value is known, it is now possible to calculate the unknown resistance value R_x with

the following equation:

$$\frac{t_{ref}}{R_{ref}} = \frac{t_x}{R_x} \Rightarrow R_x = \frac{t_x}{t_{ref}} \cdot R_{ref}$$

From this equation the self-calibration of the converter can be derived, which is given by measuring the discharging time through the reference resistance.

1.2.4.3 Measuring of the Radiator and Ambient Temperature

The following measurements are carried out during one cycle:

1. Measuring of the reference resistance R_{ref}
2. Measuring of the ambient temperature sensor NTC_A
3. Measuring of the radiator temperature sensor NTC_R

The measuring values are calculated with the following formula:

$$NTC_A = \frac{t_{NTC_A}}{t_{ref}} \cdot R_{ref} \quad NTC_R = \frac{t_{NTC_R}}{t_{ref}} \cdot R_{ref}$$

The reference resistance value is defined ex works with a tolerance of 0.5% with 50 ppm. The reference resistance features an excellent temperature and long-term stability.

The capacitor value and the threshold voltage have to remain stable over the whole cycle. However, they can vary at the medium- or long term without causing any failures because the self-calibration of the converter is repeated in every cycle while measuring the reference resistance.

1.2.5 Calculation of the Displayed Consumption Value

The value displayed on the heat cost allocator is calculated as follows:

Double sensor device

$$Q = Kc * Kq \int \left(\frac{T_H - T_A}{60} \right)^{1.33} dt$$

Explanation:

T_H	Temperature of the radiator surface in [°C]
T_A	Ambient temperature in [°C]
Q	Displayed consumption value, without unit
Kc	Factor that carries back the ΔT measured at a normalized value
Kq	Factor Kq is a numerical value of the nominal power of the radiator stated in [kW].

Unit scale: $Kc = 1$ and $Kq = 1$.
Product scale: $Kc <> 1$ and $Kq <> 1$

1.2.6 Start of Counting

The updating (increment) of the consumption value is carried out under the following conditions:

During winter period (heating period):

Or

During summer period (off heating period):

Or

Explanation:

T_R	Radiator temperature
T_A	Ambient temperature
ΔT_{MIN}	Minimum temperature difference between radiator and room 3K for standard device (winter heating period standard setting) 4K for remote sensor device (summer heating period standard setting)

Note:
The thresholds of starting (25°C et 35°C) are indicative values. These temperatures of starting are adjust-ed according to the needs and specificities of the customer.

1.3 Display and Additional Functions

1.3.1 The Menu Sequences of the Digital Display

The menu sequences

Ex factory all menu sequences are activated. With a software the order of the menu sequences 1 - 15 can be changed in any order. However the order within the individual menu sequences 1 – 15 cannot be changed. It is also possible to hide individual menu sequences so that they are not visible to the end-user.

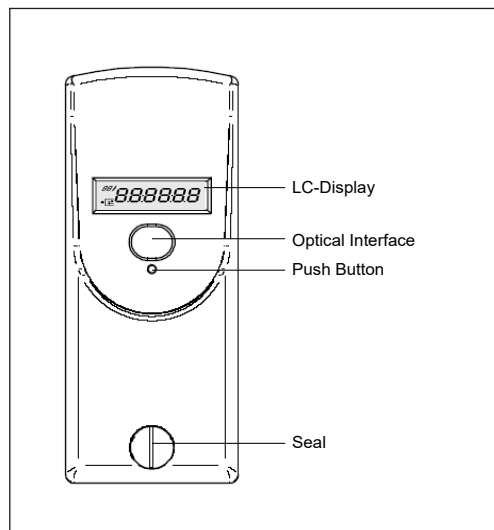
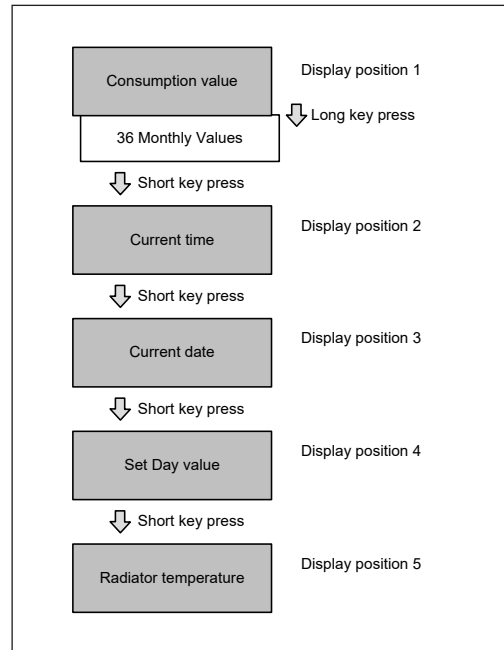
When reading out over the optical interface or via radio the complete set of data is always readout and transferred.

Operation of the Push Button

When pushing the button briefly the digital display always goes to the next menu sequence.

When pushing the button in one menu sequence for 2 seconds the individual values within the selected menu sequence can be accessed. When the last value within one menu sequence has been displayed, the 1st position will be displayed by pushing the button again.

If the button is not pushed for 2 minutes, the digital display returns to the cumulated consumption value.



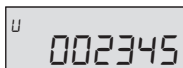
1.3.2 The Digital Displays

During normal operation the display is deactivated and can be activated by pushing the button.

If the button is not pushed, the display will be active for 2 minutes only.

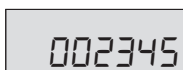
On request, the heat cost allocator is also available with permanent display 24h/24h or with a rolling menu displayed.

Consumption Value Unit Scale



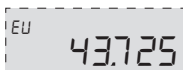
On the display of the heat cost allocator with unit scale an index **u** for unit is shown on the left side. If the index **u** is not displayed, the heat cost allocator is equipped with the product scale.

Consumption Value Product Scale



When commissioning the device this value is 000000. When reaching the value 999999, the counting restarts automatically at 000000.

Display in Euro



The heat cost allocators have the option to display the heating cost in Euro.

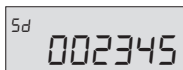
The cost in Euro indicated on the display is only approximate and is based on historical values from the previous year.

The displayed cost does not necessarily represent the charges to be paid.

Manufacturer and supplier decline any claims concerning the use and interpretation of the indicated values.

This option can be activated via a software.

Set day Value



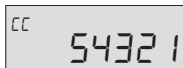
With the index **Sd** the consumption value recorded at midnight of the set day is displayed.



The consumption value recorded can be in unit scale or in product scale. It's depending of the unit setting.

If a new device has not yet reached the programmed set day, 000000 is displayed.

Check code



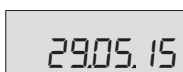
With the index **CC** the check code for the plausibility check of the manual readout is displayed.

Time



The current time (**always winter time**).

Date



The current date of the heat cost allocator.

1.3.2 The Digital Displays *(continuous)*
Set Day

It is possible to program an annual set day on which the cumulated consumption value as well as the maximal radiator temperature are recorded.

With the index **Sd** the programmed annual set day is displayed.

Date of Opening of the Device

Each heat cost allocator is equipped with a manipulation protection which detects an unauthorised opening of the device after installation to the radiator. The date of the last opening of the device is recorded and displayed with the index **od**.

Data messa in funzione

With the index **Cd** the commissioning date is displayed, i.e. the date on which the device has been activated by pushing the button or during the mounting of the aluminium back plate if the function automatic commissioning is set.

Cumulated Duration of the Opening of the Device

With the index **du**, the cumulated duration in minutes during which the device was opened is detected. This display turns up only after commissioning in case the heat cost allocator was opened or removed.

Fraud Counter

This value indicates how many times the fraud / manipulation was activated.

Identification Number

With the index **IS** an 8 digit identification number is displayed. Ex factory the serial number is identical with the identification number. The first two digits of the identification number are the two small digits on the left upper side of the digital display.

Running Hours

With the index **rh**, the running hours is displayed. This value can be compared to the battery use duration.

Monthly Values

The cumulated consumption values are recorded automatically at midnight on the last day of each month.

Number of monthly values: 36

The small digits on the upper left side show the number of previous monthly values. Digit 01 stands for the recent full month and digit 36 stands for the least recent month. All monthly values are set to 000000 when the device is commissioned.

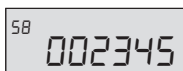
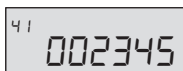
Note:

Short telegram, OMS compliant: no monthly values transmitted via radio telegram.

Long telegram for **Walk-by reading**, the first 18 monthly values transmitted via radio telegram.

1.3.2 The Digital Displays *(continuous)*

Half Monthly Values



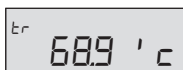
Note:
Short telegram, OMS compliant and **long telegram** for **Walk-by reading**: no half monthly values transmitted via radio telegram.

The cumulated consumption values are recorded automatically at midnight on the 16th of each month.

Number of monthly values: 18

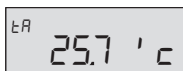
The small digits on the upper left side indicate the number of half monthly values. Digit 41 stands for the recent half monthly value and digit 58 for the least recent half monthly value. All half monthly values are set to 000000 when the device is commissioned.

Radiator Temperature



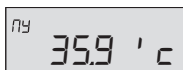
With the index **tr** the current radiator temperature is displayed.

Ambient Temperature



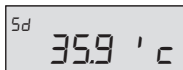
With the index **tA** the current ambient temperature is displayed.

Maximum Radiator Temperature of the Current Heating Period



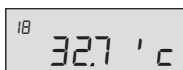
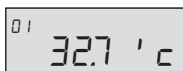
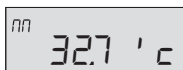
With the index **nY** the maximum radiator temperature of the current heating period (since the Set Day) is displayed.

Maximum Radiator Temperature of the Previous Heating Period



With the index **Sd** the maximum radiator temperature of the previous heating period (before the Set Day) is displayed.

Monthly Value for Maximum Radiator Temperature

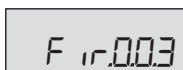


With the index **nn** the maximum radiator temperature of the currently month is displayed.

Number of monthly values: 18

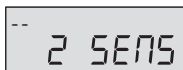
Recording of 18 monthly values for the maximum radiator temperature.
 The small digits on the upper left side show the number of previous monthly values. Digit 01 stands for the recent full month and digit 18 stands for the least recent month.
 All monthly values are set to 000000 when the device is commissioned.

Software Version



On the right side the software version x.x.x of the heat cost allocator is displayed.

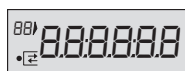
Measuring Principle



The index -- or **FF** indicates the type of the radiator sensor:
 -- = Standard device, compact sensor.
FF = Remote sensor device, remote sensor.
2 SENS = double sensor device.

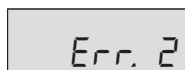
1.3.2 The Digital Displays *(continuous)*

Segment Test



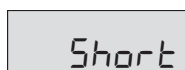
Segment test of the display.

Error Message



If an error is detected, **Err** is displayed in the first display sequence with the corresponding error message.

wM-Bus mode



Telegram defined into heat cost allocator. Type of telegram must be defined when ordering.
Short telegram (**Short**) used.
Long telegram (**Long**) used.

1.3.3 Rolling Digital Display

SonoHCA also feature the possibility of a rolling display 24h/24h.

With a software, it is possible to individualize the rolling display.

Up to 15 parameters can be chosen optionally from the list below. These parameters can be combined in any order and are then shown on the rolling display.

- Consumption value
- Time
- Date
- Set Day
- Set Day value
- 36 monthly values for cumulated consumption
- 18 half monthly values for cumulated consumption
- Radiator temperature
- Ambient temperature
- Identification number
- Maximum radiator temperature of the previous heating period
- Maximum radiator temperature of the current heating period
- 18 monthly values for the maximum radiator temperature
- Error code
- Manipulation protection: storing of the duration of the last manipulation with date and the accumulated duration of all manipulations in minutes
- Fraud Counter
- Segment test
- Software version
- Running hours
- Commissioning date
- Measuring principle, single sensor device with start sensor or double sensor device
- Short or long telegram for radio wM-Bus

The duration of the display of the values can be chosen individually between **1 - 30** seconds.

Example:

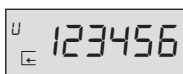
Order and duration of display

- Pos. 0 : Error (parameter ex factory, cannot be changed) [5 s]
(only displayed in case of an error message)
- Pos. 1 : Time [1 s]
- Pos. 2 : Segment test [5 s]
- Pos. 3 : Consumption value [10 s]
- Pos. 4 : Set Day [1 s]
- Pos. 5 : Set Day value [8 s]
- Pos. 6 : Monthly value [5 s]
- Pos. 7 : Blank (therefore no display).
- Pos. 8 – Pos 15 : Blank (therefore no display. It is not necessary to occupy all positions)

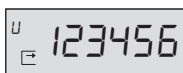
The rolling display can also be deactivated by a software, i.e. the device operates as in standard menu mode except that only these values and the values of the corresponding sub-menus that have been defined in the rolling menu can be displayed by pushing the button. After 2 minutes during which the button has not been pushed, the display goes out.

1.3.4 Communication Indicator  and Measuring Indicator •

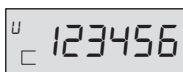
The communication indicator displays if the heat cost allocator is currently making a calculation and/or if it communicates internally or externally over the optical.



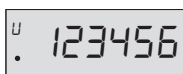
If the arrow of the communication indicator points inwardly internal communication takes place over the optical.



If the arrow of the communication indicator points outwards external communication takes place over the optical.



If the frame of the communication indicator appears the heat cost allocator has detected a wake-up signal.



If the point indicator appears the heat cost allocator is carrying out a measuring or a calculation.

1.3.5 Real Time Clock and Calendar

The device has a 24 h real time clock and a calendar. However, the change from summer to winter time is not taken into account. The calendar is programmed until December 31

2099, including all leap years. The real time clock as well as the date of the heat cost allocator can be readout over the optical interface or via radio and if necessary be updated.

If the current date and time have to be updated over the optical interface or via radio, it is necessary to check the date of the computer first. Date and time of the device aim at those of the computer. If the reading/programming device (computer/PDA/ Smart Phone) has a wrong time, this time will be programmed into the heat cost allocator and suddenly no longer be reached at the usual time, because the time of the heat cost allocator possibly is shifted by several hours.

1.3.6 Readout

The current and monthly values recorded by the heat cost allocator as well as several other parameters can be readout over the optical interface or also over radio.

The following parameters are transmitted:

Optical Interface:

- Identification number (information in header)
- Date and time
- Consumption value
- Set Day
- Set Day value
- Maximum radiator temperature of previous heating period
- 36 monthly values and 18 half monthly values for cumulated consumption
- 18 monthly values for the maximum radiator temperature
- Rating factor K_c
- Rating factor K_Q
- Current radiator temperature
- Current ambient temperature
- Maximum radiator temperature of the current heating period
- Manipulation protection:
 - Duration of the manipulations
 - Date of the last manipulation
 - Manipulation counter
- Error code
- Firmware version
- Commissioning date
- State of parameters
- 36 half monthly values for the average ambient temperature

1.3.6 Readout
(continuous)

The following parameters are transmitted by **SonoHCA via 868MHz Radio (wM-Bus):**

Short telegram, OMS compliant:

- Identification number (information in header)
- Date and time
- Consumption value
- Set Day
- Set Day value
- Error code
- Current radiator temperature
- Current ambient temperature
- State of parameters
- Rating factor K_c
- Rating factor K_Q
- Current radiator temperature
- Current ambient temperature
- Maximum radiator temperature of the current heating period
- Maximum radiator temperature of the previous heating period
- Manipulation protection:
 - Duration of the manipulations
 - Date of the last manipulation
 - Manipulation counter

Long telegram for Walk-by reading:

- Identification number (information in header)
- Date and time
- Consumption value
- Set Day
- Set Day value
- 18 monthly values for the cumulated consumption
- Error code
- Firmware version
- Commissioning date
- State of parameters

AES 128 bits encryption is available for all versions.

1.3.7 Check Code

A special additional feature of the electronic heat cost allocator is the check code function for the postcard mail-in method.

With especially developed algorithms a 5 digit check code is generated out of several device data. With this check code the values stated on the postcards mailed-in by tenants can be cross checked.

For this check, the following parameters are required:

- Identification number
- The date
- The current consumption value
- The check code

For the verification of the check code SonoHCA places all necessary tools (programs, formulas) at the disposal of the authorized personnel.

1.3.8 Change of Battery

The battery of the heat cost allocator is soldered. The lithium battery is not rechargeable. A change of battery is not planned. Therefore the heat cost allocators have to be replaced after 10 years.

Disposal

It is mandatory to dispose of the heat cost allocator environmentally friendly or to return it after use to the manufacturer for appropriate disposal to ensure that the components are recycled in accordance with the battery and electronic scrap regulations. Should you do the disposal yourself please get information from your local authority on the recycling possibilities



1.3.9 Protection against Outside Influences
1.3.9.1 Seal

The heat cost allocator is closed with a seal which cannot be removed without damaging it. Thus it is impossible to open the device unnoticed.

After installation, the electronic part of the device is no longer accessible. The digital display,

the push button and the optical interface are covered by a sight glass. It is impossible to access the inside of the device through these openings without damaging the sight glass.

1.3.9.2 Electronic Detector in Case of an Opening of the Device

The electronic detector detects unauthorised opening, removing and closing of the heat cost allocator. As soon as the housing of the heat cost allocator is opened and/or removed, the electronic detector triggers an error message.

The duration of each opening is counted, cumulated and only the last date of opening recorded.

1.4 Special Functions
1.4.1 Suppression of Summer Counting

The period during which summer counting is suppressed can be programmed by the software. If the heat cost allocator is in the period of summer counting suppression, consumption

measuring is deactivated. If an automatic readout is carried out during this period the temperatures can be read anyway since the temperature measuring is still active.

1.4.2 Annual Reset of the Consumption Value

The function of the annual reset of the cumulated consumption value can be programmed by the software over the optical interface. One of the following options can be chosen for the reset:

- Set Day
- Never

Please note that only the cumulated consumption value is reset. All other values are not reset.

1.4.3 Unit Scale and Product Scale

For the heat cost allocators SonoHCA, distinction is made between the unit scale and the product scale.

If heat cost allocators are used with the same scale on all radiators, this scale is called unit scale. The display values are the same on the different radiators if the heat cost allocators are

exposed to the same temperature for the same period of time.

The evaluation of the display values is carried out arithmetically with the rating factors of the calculation software to receive the final consumption values.

1.4.3.1 Advantages of the Unit Scale

- Easy and quick installation of the heat cost allocator, no programming necessary
- Possible errors by doing the scaling on site are avoided due to allocation by experts

With the product scale, the radiator rating data are programmed in the heat cost allocator

on site. The overall rating factor total (K_{Total}) is calculated directly in the heat cost allocator and thus the consumption value is displayed immediately.

1.4.3.2 Advantages of the Product Scale

- The actual consumption of each consuming point within one billing unit can be compared easily and quickly on site

1.5 Parameterization

A software allows the parameterization over the optical interface.

To protect heat cost allocator against fraud, a password has been integrated into the products, therefore also in the software. The default

“installer” password ex-factory of the heat cost allocator is "56781234", and may be changed by the user.

1.6 Error

The heat cost allocator displays an error message with the 3 letters "Err." and a code. If several errors occur at the same time, the different codes are added together.

The error is displayed in the first position of the display menu. It will still be possible to select all the other display menus by pressing the

navigation button. If the navigation button is no longer pressed for a period of 2 minutes, the error code will automatically appear again in the first position of a display menu.

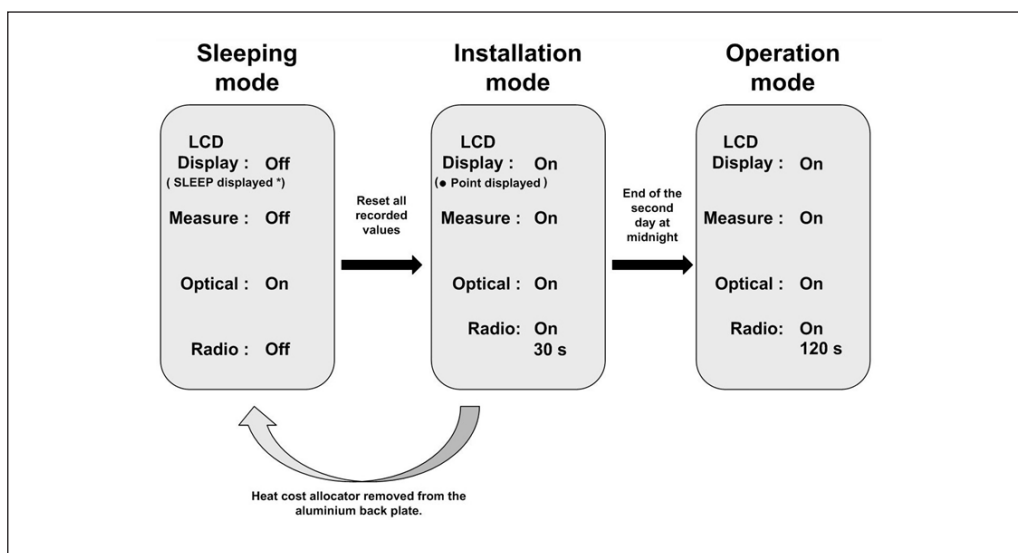
Display of an error automatically disappears when the error is no longer present.

1.6.1 List of Errors

- Err. 1 Manipulation (fraud)
- Err. 2 Measuring error
- Err. 32 Push button constantly pushed
- Err. 64 Measured temperature not within temperature range (0...105°C; 0...120°C remote sensor)

1.7 Radio Standby – SonoHCA

In order to achieve a user-friendly and power-saving radio standby, the radio heat cost allocator features the following different operating modes:



*: SLEEP information will be displayed by pushing the push button.

Transition from sleeping mode to installation mode is achieved by two different ways:

1. Pushing the push button once the heat cost allocator is mounted on the aluminium back plate.
2. An automatic detection during the mounting on the aluminium back plate. This function must be specified at the order.

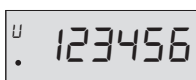
1.7.1 Sleeping Mode

Ex factory the radio heat cost allocator is in sleeping mode, but the internal clock and the date are running.

Current consumption is reduced to a minimum since no measuring and no calculations are carried out. Only the optical communication interface is available.

Transition from sleeping to installation mode is achieved by pushing the button once the heat cost allocator is mounted on the aluminium back plate or by an automatic commissioning during the mounting on the aluminium back plate (must be specified when ordering).

1.7.2 Installation Mode



The • symbol indicates that the heat cost allocator is in installation mode.

During the installation mode all functions of the radio heat cost allocator are carried out.

- For heat cost allocator, an installation telegram is activated during the installation phase. Data are transmitted each 30 seconds (short and long telegram) till at the end of the second day at midnight.

The radio heat cost allocator switches automatically into operating mode at the end of the second day at midnight.

If heat cost allocator is removed from the aluminium back plate during the installation mode, the heat cost allocator switches to the sleeping mode.

1.7.3 Operation Mode for Radio wM-Bus (SonoHCA 868MHz Radio)

1.7.3.1 Readout over the **short telegram** (OMS compliant)

With this operating mode, the heat cost allocator SonoHCA transmits data:

- Transmission interval each **120 seconds** (minimum)
- Radio reading, **24h/24h**

1.7.3.2 Readout over the **long telegram** for Walk-by reading

With this operating mode, the heat cost allocator SonoHCA transmits data:

- Transmission interval each **120 seconds** (minimum)
- Radio reading and periods, **12h per day (programmable), 5days/7days**

1.7.4 Short Telegram or Long Telegram for Radio wM-Bus (868)

Type of telegram must be defined when ordering. There is no possibility to select the type of telegram directly on the heat cost allocator.

2. Installation

2.1 Introduction

To guarantee the proper functioning of the heat cost allocator, it is of great importance that it is installed by an expert. On one hand, a constant heat transfer between radiator and heat cost allocator has to be guaranteed. On the other hand, the installation of the heat cost allocators on a large variety of radiator types should be as easy as possible.

The installation can be carried out in two different ways.

- The standard device is installed directly on the radiator.
- For the wall-mounted version the remote sensor is installed on the radiator and the heat cost allocator is wall-mounted.

For the installation of the heat cost allocators, special fastening-parts kits are available. To avoid faulty installation, we also recommend reading the Kc-data in the data base prior to the installation.

The heat cost allocator is an electronic device which – like all other similar devices – has to be handled with care. It is sensible to electric discharge and contacting certain areas of the PCB. Electric discharge can destroy the device or – even worse - damage it in a way that it fails after an indefinite period of time.

For this reason it is essential in any case to avoid contact with the PCB.

2.2 DIN Standard Requirements for the Installation

- Heat cost allocators can be installed in heating systems where the mean temperature is between the upper operating temperature limit t_{max} and the lower operating temperature limit t_{min} (t_{max} and t_{min} are stated in the technical data, see chapter 4 Technical Data)
- The installation of the devices has to be durable and avoid manipulations.
- The devices have to be installed in a place where sufficient correlation between the displayed value and the heat output of the radiator is given over a maximum operating range.
- Within a billing unit (in case of pre-distribution of the energy consumption: within a users' group) only heat cost allocators of the same manufacturer and

the same type with identical rating systems may be used. Each device type has to be identifiable as such.

- Combinations of radiators and heat cost allocators with a measured value of $c > 0.3$ in basic condition are not permitted. In exceptional cases c -values of up to 0.4 are permitted within a billing unit if the concerned heating surface does not exceed 25 % of the overall heated surface or if the mean ambient temperature is above 80 °C. Heat cost allocators may only be installed to radiators where the c -value is known at the time of billing.

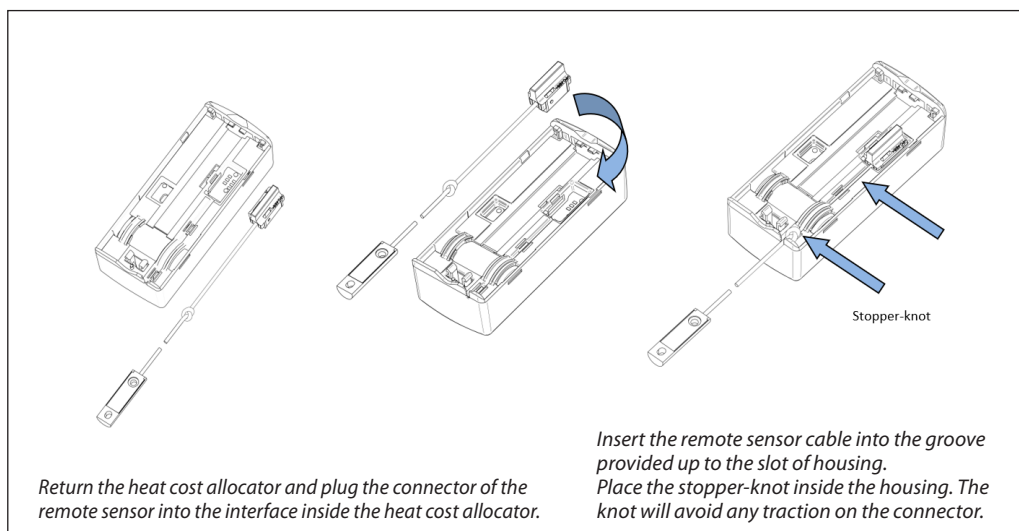
2.3 Mounting the Remote Sensor

For each version of heat cost allocator, it is possible to plug the connector of the remote sensor into an interface inside the heat cost allocator.

The remote sensor will be automatically detected by the heat cost allocator.

Once equipped with a remote sensor, the heat cost allocator will only work for an application with remote sensor.

Remote sensor version with 2 m cable. The cable includes a stopper-knot.



Proceed to the commissioning of the heat cost allocator on the aluminium back plate. Take care not to stick the cable.

Respect the color code of the radiator sensor and the remote sensor:

- **Heat cost allocator SonoHCA:** the radiator sensor and the remote sensor are manufactured with a white color.

During the commissioning of the heat cost allocator on the aluminium back plate, there are 2 possibilities to turn on the heat cost allocator:

1. By an automatic commissioning during the mounting on the aluminium back plate. See chapter **3.1 Automatic commissioning during the installation**
2. By pushing the push button. See chapter **3.2 Commissioning by pressing push button.**

Once equipped with a remote sensor, the heat cost allocator will only work for an application with remote sensor. If the remote sensor is disconnected from the heat cost allocator, an error message will be displayed.

2.4 General Restrictions

Electronic heat cost allocators cannot be used with steam heating, floor heating, ceiling radiant heaters, flap-controlled radiators and electrical radiator.

In case of combined valve- and flap-controlled radiators, the installation of an electronic heat cost allocator is only permitted if the flap control is dismantled or maintained in position „open“.

Convactor heaters where the performance can be altered by an electric blower as well as heat towel racks with an electric heating cartridge may only be equipped with an electronic heat cost allocator if the additional electric attachments are dismantled or shut down.

2.5 Operating Range

The SonoHCA heat cost allocators can be used in heating systems with the following mean heating medium temperatures:

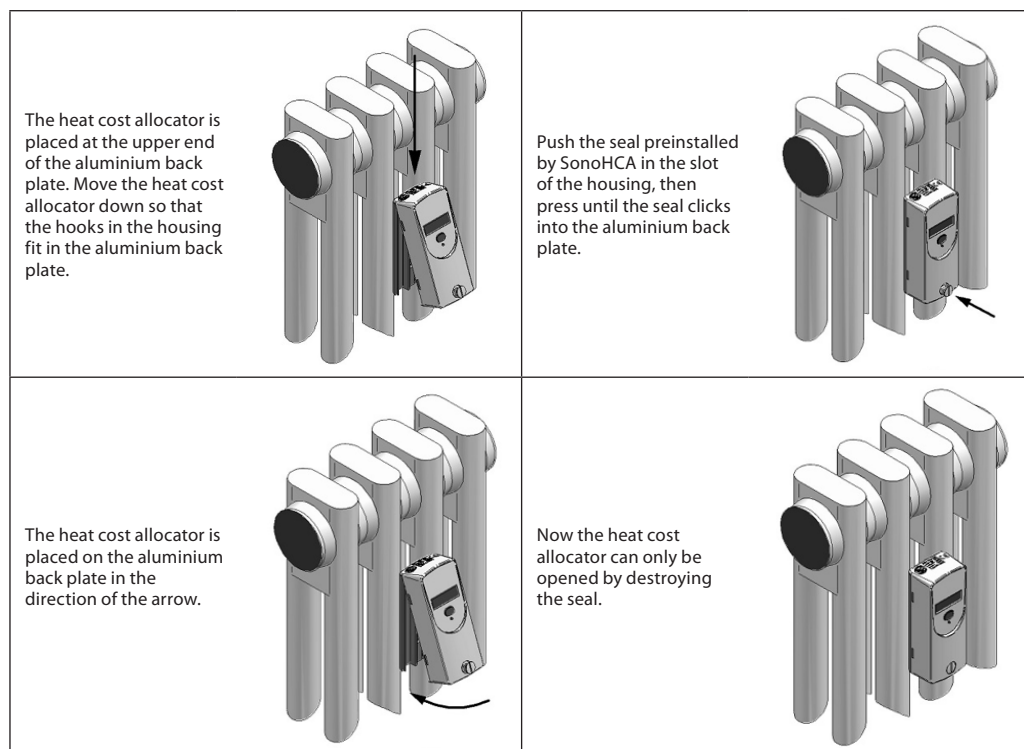
For double sensor devices:

- 35°C...105° C for standard heat cost allocators
- 55°C...120°C for wall-mounted heat cost allocators (remote sensor)

A heat cost allocator can be used in heating systems where the suitability of the system is in line with the operating conditions for which the heat cost allocator has been approved.

2.6 Mounting and Sealing

After installation of the respective fastening-parts kit to the radiator, the heat cost allocator can be mounted and sealed by the installer as described below:



3. Commissioning

Ex factory the heat cost allocators are in the so-called sleeping mode. In this mode no measuring is carried out and thus no consumption values are calculated. Furthermore the digital display, the radio communication options as well as the device opening detection are deactivated. Only the optical communication interface is available.

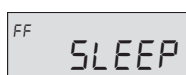
Transition from sleeping to installation mode is achieved by pushing the button once when the heat cost allocator is mounted on the aluminium back plate or by an automatic commissioning during the mounting on the aluminium back plate.

The date and time are running in the background.

After the commissioning and before leaving a new site, we recommend to perform a radio read out test and to create an installation protocol, to ensure that all the radio communication between the heat cost allocators and the radio central or radio modem was successful.

3.1 Automatic commissioning during the installation

Once heat cost allocator is fixed with/against the aluminium back plate, the LCD-display will show the following message:



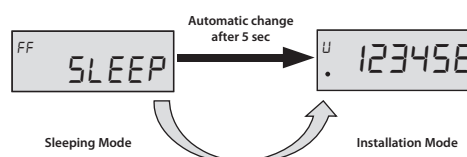
The index **FF** indicates that the heat cost allocator has recognized the remote sensor.

If the remote sensor is not detected by the device, the index -- will be displayed.

The index -- indicates also a standard device with a compact sensor.

This message will be displayed during **5 seconds** and after that, the transition from sleeping mode to installation mode will be done automatically.

Transition from sleeping to installation mode is achieved automatically after 5 seconds:



The **•** symbol indicates that the heat cost allocator is in installation mode.

Once installed on the back plate or the wall, the heat cost allocator switches automatically from the installation mode into the operating mode at the second transition of midnight.

3.2 Commissioning by pressing push button

Once heat cost allocator is fixed with/against the aluminium back plate, the LCD-display will show the following message:



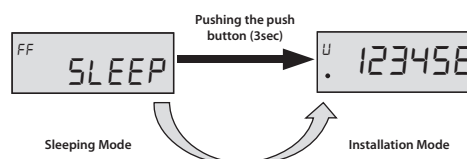
The index **FF** indicates that the heat cost allocator has recognized the remote sensor.

If the remote sensor is not detected by the device, the index -- will be displayed.

The index -- indicates also a standard device with a compact sensor.

This message will be displayed during **2 minutes** before the LCD-display will switch off.

Transition from sleeping to installation mode is achieved by pushing the push button during **3 seconds:**



The **•** symbol indicates that the heat cost allocator is in installation mode.

Once installed on the back plate or the wall, the heat cost allocator switches automatically into operating mode at the second transition of midnight.

4. Technical Data

Measuring systems	For heating systems with $t_{m_{min}} \geq 35\text{ °C}$ Calculation with variable ref. temperature T-air sensor Necessary rating factors: K_{gr} , K_{er} , (KA, KT)
Optional scales	Unit scale or product scale
Current supply	3 V-Lithium-battery
Life-span with 1 battery	> 10 years
Display	Liquid crystal display (LCD-display)
No. of displayed digits	6 digits (000000 ... 999999)
Sensor temperature range:	0 °C ... 120 °C
Exponent	$n = 1.33$
Radiator – performance range	4 Watt ... 16.000 Watt
Design temperature range ($t_{m_{min}} \dots t_{m_{max}}$)	Double sensor system 35 °C ... 105°C / 120 °C (compact- / remote sensor)
K_c -values	Rating factors see digital K_c -data base
Models	Compact device or remote sensor device
Set day	Freely programmable
Data storage:	144 monthly values and 18 half monthly values for cumulated heat consumption, 18 monthly values for the maximum radiator temperature. Maximum temperature of the current and previous year, all relevant consumption values
Self-test	Before every measuring
Start of counting	Heating period 25°C – 40°C (programmable) Off-heating period 25°C – 40°C (programmable)
Standard version	Acc. to EN 834
Homologation acc. to	HKVO: A1.02.2015
DIN registry No.	291/08 E
Conformity	CE
Standard mounting height	At 75% of the overall height of the radiator. If the height of the radiator is less than (<) 470 mm, the heat cost allocator must be installed at 50% BH. (in case of deviating mounting heights, please refer to this manual and the digital K_c -data base.

