

Flow Control Valves

SC 10

Flow Control, Insert Type, Fixed, Pressure Compensated, Restrictive Type

210 bar [3000 psi] • 16 l/min [4.2 US gpm]

DESCRIPTION AND OPERATION

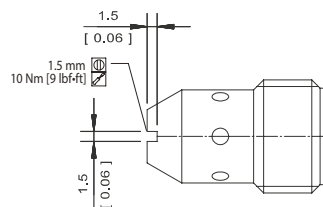
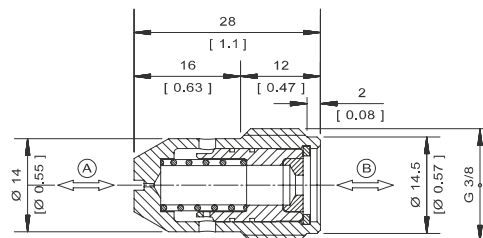
This is an insert type, fixed, restrictive type, pressure compensated flow control valve, where the flow from port A will remain constant regardless of the pressure difference across the valve. Flow enters at port B and passes across a fixed orifice in the spool, which creates a pressure drop. This causes the spool to move back against the spring, which then restricts the outlet flow.

SCHEMATIC



DIMENSIONS

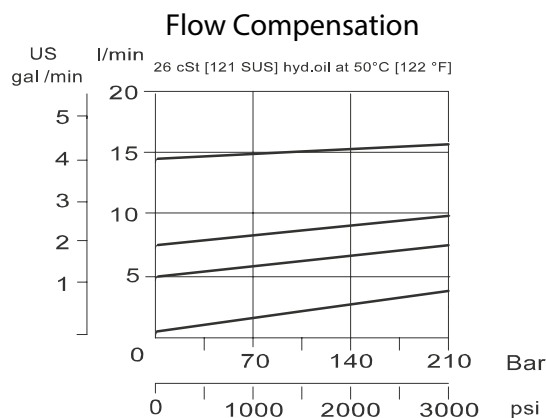
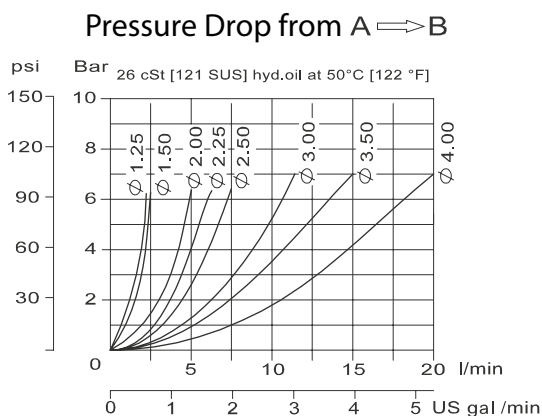
mm [in]



PERFORMANCE DATA

Rated pressure	210 bar [3000 psi]
Rated flow	16 l/min [4.2 US gpm]
Flow range	2.0-16.0 l/min [0.53-4.2 US gpm]
Weight	0.023 kg [0.05 lb]
Cavity	1/2" BSP (Consult factory)

PERFORMANCE CURVES



MODEL CODE

SC10 - 1.25 - G - 00

Orifice Size

Code - Orifice Size in mm

Code	Flow at 100 bar [1450 psi]	
	l/min	US gpm
1.25	2.0	[0.53]
1.50	3.0	[0.79]
2.00	4.0	[1.06]
2.25	5.0	[1.32]
2.50	6.0	[1.59]
3.00	9.0	[2.38]
3.50	11.0	[2.91]
4.00	16.0	[4.23]

Housing

Code	Ports
00	No housing
L	3/8 BSP