

Flow Control Valves

SC 13

Flow Control, Insert Type, Fixed, Pressure Compensated, Restrictive Type

210 bar [3000 psi] • 47 l/min [12.4 US gpm]

DESCRIPTION AND OPERATION

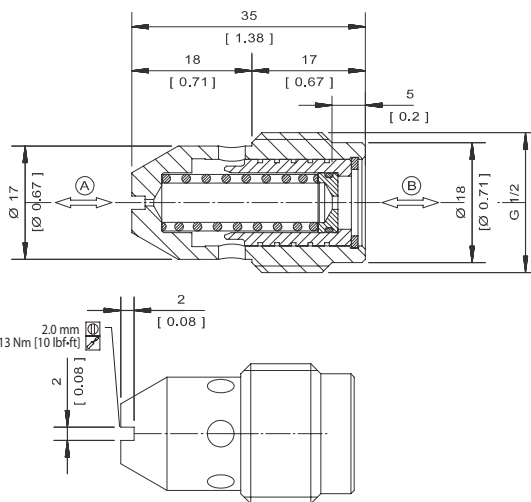
This is an insert type, fixed, restrictive type, pressure compensated flow control valve, where the flow from port A will remain constant regardless of the pressure difference across the valve. Flow enters at port B and passes across a fixed orifice in the spool, which creates a pressure drop. This causes the spool to move back against the spring, which then restricts the outlet flow.

SCHEMATIC



DIMENSIONS

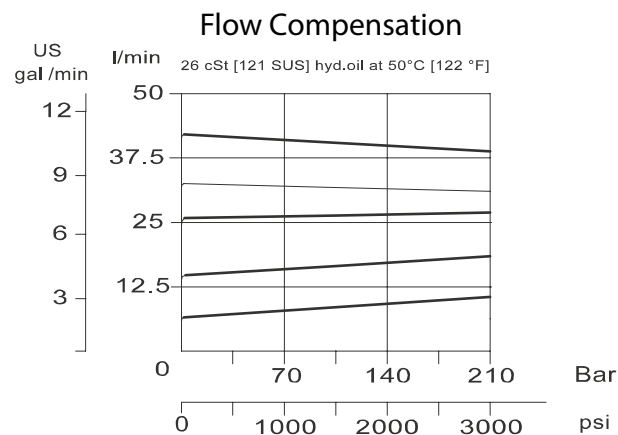
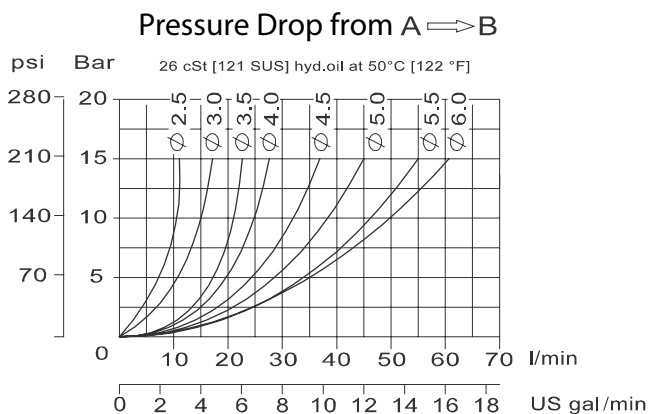
mm [in]



PERFORMANCE DATA

Rated pressure	210 bar [3000 psi]
Rated flow	47 l/min [12.4 US gpm]
Flow range	9-47 l/min [2.38-12.4 US gpm]
Weight	0.045 kg [0.01 lb]
Cavity	3/8" BSP (Consult factory)

PERFORMANCE CURVES



MODEL CODE

SC13 - 4.50 - G - 00

Orifice Size

Code - Orifice Size in mm

Flow at 100 bar [1450 psi]

Code	l/min	[US gpm]
2.50	9	[2.38]
3.00	12	[3.17]
3.50	17	[4.49]
4.00	21	[5.55]
4.50	27	[7.13]
5.00	32	[8.45]
5.50	40	[10.57]
6.00	47	[12.42]

Housing

Code	Ports
00	No housing
L	1/2 BSP