

Flow Control Valves

VRC 06

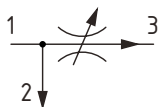
Flow Control, Partially Adjustable, Pressure Compensated, Priority Type

315 bar [4600 psi] • 30 l/min [8 US gpm]

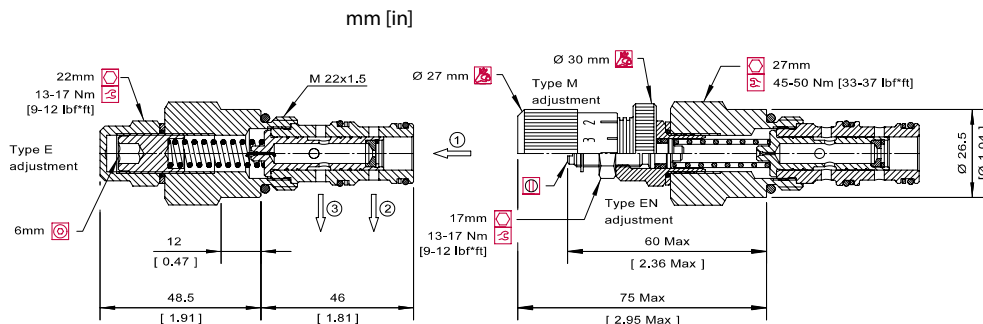
DESCRIPTION AND OPERATION

This is a partially adjustable, priority type, pressure compensated flow control valve, where the flow from port 3 will remain constant regardless of the pressure difference across the valve, while excess flow passes from port 1 to 2. Flow enters at port 1 and passes across a fixed orifice in the spool, which creates a pressure drop. This causes the spool to move back against the spring, which then restricts the outlet flow. Port 1 then opens to port 2 to allow excess flow to pass. The regulated flow will always take priority and remains constant if the working pressure is higher in either port 2 or port 3.

SCHEMATIC



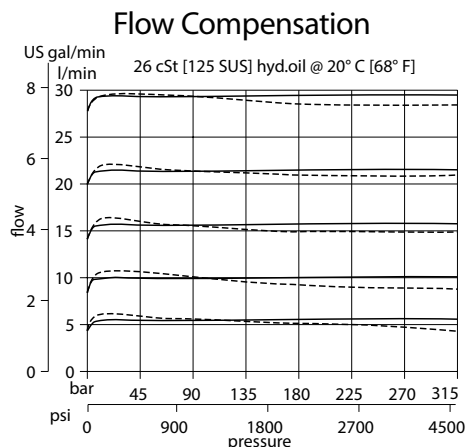
DIMENSIONS



PERFORMANCE DATA

Rated pressure	315 bar [4600 psi]
Rated flow	30 l/min [8 US gpm]
Max inlet flow	50 l/min [13 US gpm]
Flow range	1-30 l/min [0.4-8 US gpm]
Weight	0.21 kg [0.46 lb]
Cavity	NCS06/3

PERFORMANCE CURVES



MODEL CODE

VRC 06 - EN - 2.0 - SE3/8 - V - 4.0

Adjustment Option

E - Internal
EN - External
M - Calibrated Knob

Orifice Size

Code - Orifice size in mm

Code	l/min	[US gpm]
1.25	1-4	[0.3-1.1]
2.0	3-10	[0.8-2.5]
3.0	6-20	[1.6-5.3]
3.5	10-30	[2.6-7.9]

Flow Setting

Code - Flow in l/min
Specify in 1.0 lpm increments within flow range
Example

Code	l/min	[US gpm]
4.0	4.0	[1.0]

Seal Option

Code	Seal Kit
V-Viton	230000110
Omit-Buna-N	230000070

Housing

Code	Ports&Material	Housing Model Code
0	No Housing	No Housing
SE3/8	AL, 3/8 BSP	NCS06/3-SE-3/8
SE1/2	AL, 1/2 BSP	NCS06/3-SE-1/2
SE6S	AL, #6 SAE	NCS06/3-SE-6S
SE8S	AL, #8 SAE	NCS06/3-SE-8S

* Aluminum bodies are to be used for pressures less than 210 bar [3000 psi].

* Additional housings available