

# Logic Elements

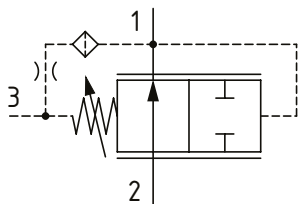
## DPS2-8-V

Logic Element, Normally Closed, Spool Type, Vent to Open  
**350 bar [5000 psi] • 30 l/min [8 US gpm]**

### DESCRIPTION AND OPERATION

This is a 3-ported, normally closed, vent to open spool type logic element. Port 1 is connected to port 3 through an orifice. By opening port 3 to tank, flow can pass from port 1 to port 2 but not from port 2 to port 1. Closing port 3 will prevent the valve from opening from port 1 to port 2. By controlling the flow or pressure out of port 3 with a secondary valve, the valve can be used as an on/off valve or in a pressure control function.

### SCHEMATIC



### PERFORMANCE DATA

<b>Rated pressure</b>	<b>350 bar [5000 psi]</b>
<b>Rated flow</b>	<b>30 l/min [8 US gpm]</b>
<b>Leakage</b>	82 ml/min [5 in3/min] @ 350 bar [5000 psi]
<b>Weight</b>	0.07 kg [0.20 lb]
<b>Cavity</b>	SDC08-3

### MODEL CODE

**DPS2 - 8 - V - V - A - 4T - F - 040**

#### Seal Option

Code	Seal kit
<b>Omit</b> -Buna - N	02-160755
<b>V</b> -Viton	02-160756

#### Housing Material

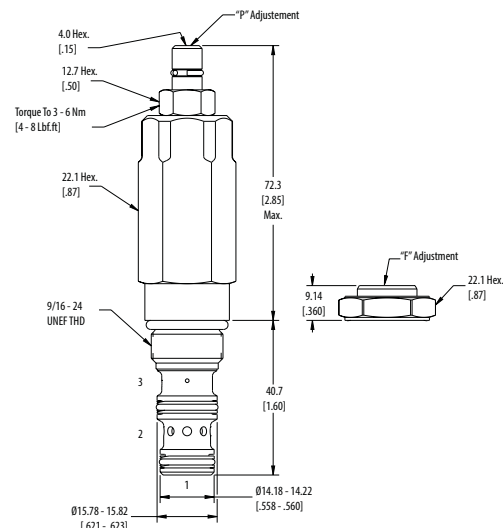
**Omit**-No housing  
**A**-Aluminum  
**S**-Steel

#### Housing

Code	Port size	Aluminum	Steel
<b>0</b>	No housing		
<b>4T</b>	#4 SAE	02-160741	02-160745
<b>6T</b>	#6 SAE	02-160742	02-160746
<b>2G</b>	1/4" BSP	02-160739	02-160743
<b>3G</b>	3/8" BSP	02-160740	02-160744

\* Aluminum bodies are to be used for pressures less than 210 bar [3000 psi].

\* Additional housings available

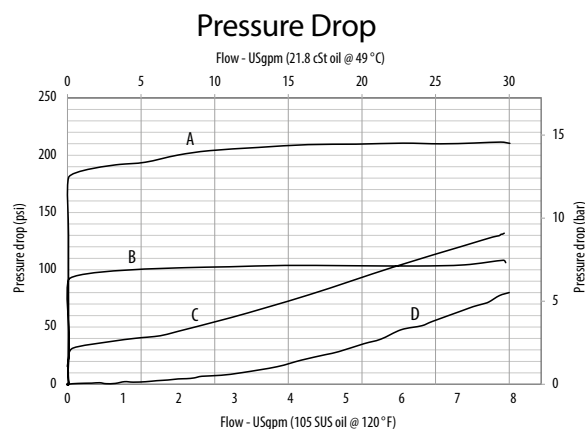


### DIMENSIONS

mm [in]

**Installation torque**  
 34-41 Nm [25-30 ft lbs]

### PERFORMANCE CURVES



**A - 160 PSI • B - 80 PSI • C - 40 PSI • D - Without Spring**

#### Differential Pressure

Code	Bar	Psi
<b>040</b>	2.80	[40]
<b>080</b>	5.50	[80]
<b>160</b>	11.0	[160]
<b>300</b>	5.5-20.7	[80-300]*

\* Only for "P" Adjustment pressure setting, factory set at Max pressure.

#### Adjustment Option

**F**- Fixed  
**P**- Pressure Adjustment