

# Logic Elements

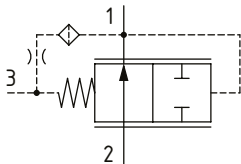
## DPS2-10-R

Logic Element, Normally Open, Spool Type, Vent to Close  
**290 bar [4200 psi] • 60 l/min [16 US gpm]**

### DESCRIPTION AND OPERATION

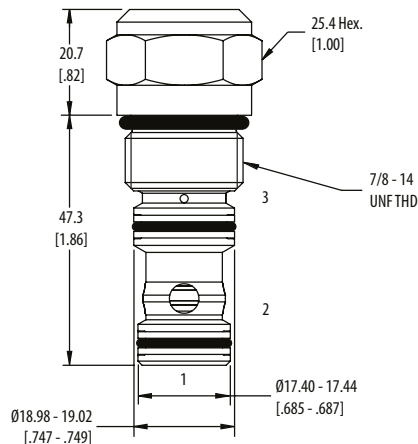
This is a 3-ported, normally open, vent to close, spool type logic element. Port 1 is connected to port 3 through an orifice. By opening port 3 to tank, flow is blocked from port 1 to port 2 and port 2 to port 1. Closing port 3 will keep the valve open from port 1 to port 2 and port 2 to 1. By controlling the flow or pressure out of port 3 with a secondary valve, this can be used as an on/off valve or as a pressure reducing valve.

### SCHEMATIC



### DIMENSIONS

mm [in]

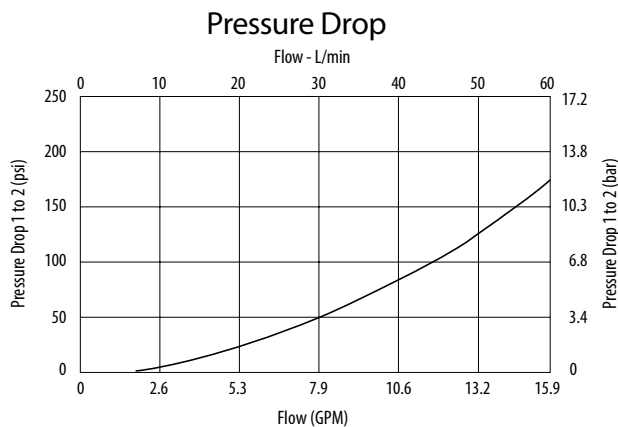


**Installation torque**  
 A-47-54 Nm [35-40 ft. lbs]  
 S-68-75 Nm [50-55 ft. lbs]

### PERFORMANCE DATA

<b>Rated pressure</b>	<b>290 bar [4200 psi]</b>
<b>Rated flow</b>	<b>60 l/min [16 US gpm]</b>
<b>Leakage</b>	82 ml/min [5 in3/min] @ 290 bar [4200 psi]
<b>Weight</b>	0.14 kg [0.30 lb]
<b>Cavity</b>	SDC10-3S

### PERFORMANCE CURVES



### MODEL CODE

**DPS2 - 10 - V - R - F - A - 3G - 005**

#### Seal Option

Code	Seal kit
Omit-Buna - N	889650
V-Viton	889652

#### Adjustment Option

F- Fixed

#### Housing Material

Omit-No housing  
 A-Aluminum  
 S-Steel

#### Housing

Code	Ports 1 & 2	Port 3	Aluminum Heavy Duty	Steel
0	No Housing			
2G	1/4" BSP	1/4" BSP	876707	
3G	3/8" BSP	1/4" BSP	876710	02-163313
4G	1/2" BSP	1/4" BSP		02-163324
6H	#6 SAE	#6 SAE	876706	
8H	#8 SAE	#6 SAE	876712	
6T	#6 SAE	#6 SAE		02-171961
8T	#8 SAE	#6 SAE		02-163322
10T	#10 SAE	#6 SAE		02-163323

#### Differential Pressure

Code	Bar	Psi
005	0.35	[5] *
010	0.7	[10] *
020	1.40	[20] *
040	2.80	[40]
080	5.50	[80]
160	11.0	[160]

\* The operating back pressure at port 3 should never be less than 1.3 times the spring set pressure.

\* Aluminum bodies are to be used for pressures less than 210 bar [3000 psi].  
 \* Additional housings available