

# Logic Elements

## DPS2-10-S

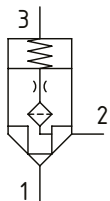
Logic Element, Normally Closed, Poppet Type, Vent to Open

350 bar [5000 psi] • 60 l/min [16 US gpm]

### DESCRIPTION AND OPERATION

This is a 3-ported, vent to open, poppet type logic element with port 2 connected to port 3 through an orifice. By opening port 3 to tank, flow can pass from port 1 to port 2 or from port 2 to port 1. Closing port 3 will prevent the valve from opening from port 2 to port 1, but flow can still take place from port 1 to port 2. The area ratio between port 1 and 3 is 1:2 and the ratio between port 1 to 2 is also 1:2. By controlling the flow or pressure out of port 3, the valve can be used as an on/ off valve or in a pressure control function.

### SCHEMATIC



### PERFORMANCE DATA

<b>Rated pressure</b>	<b>350 bar [5000 psi]</b>
<b>Rated flow</b>	<b>60 l/min [16 US gpm]</b>
<b>Pilot Ratio</b>	<b>2:1</b>
<b>Leakage</b>	<b>5 drops/min @ 350 bar [5000 psi]</b>
<b>Weight</b>	<b>0.14 kg [0.30 lb]</b>
<b>Cavity</b>	<b>SDC10-3S</b>

### MODEL CODE

**DPS2 - 10 - V - S - F - A - 3G - 040**

#### Seal Option

Code	Seal kit
Omit-Buna - N	889650
V-Viton	889652

#### Adjustment Option

F - Fixed  
S - Stroke Adjustments

#### Housing Material

Omit - No Housing  
A - Aluminum  
S - Steel

#### Housing

Code	Ports 1 & 2	Port 3	Aluminum Heavy Duty	Steel
0	No Housing			
2G	1/4" BSP	1/4" BSP	876707	
3G	3/8" BSP	1/4" BSP	876710	02-163313
4G	1/2" BSP	1/4" BSP		02-163324
6H	#6 SAE	#6 SAE	876706	
8H	#8 SAE	#6 SAE	876712	
6T	#6 SAE	#6 SAE		02-171961
8T	#8 SAE	#6 SAE		02-163322
10T	#10 SAE	#6 SAE		02-163323

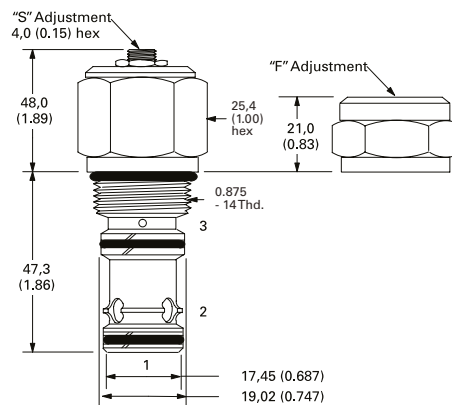
\* Aluminum bodies are to be used for pressures less than 210 bar [3000 psi].  
\* Additional housings available

#### Differential Pressure

Code	Bar	Psi
005	0.35	[5]
010	0.7	[10]
020	1.40	[20]
040	2.80	[40]
080	5.50	[80]
160	11.0	[160]

### DIMENSIONS

mm [in]



**Installation torque**  
A-47-54 Nm [35-40 ft. lbs]  
S-68-75 Nm [50-55 ft. lbs]

### PERFORMANCE CURVES

