

Logic Elements

PCS13-16

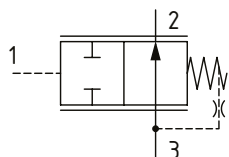
Pressure Compensator, Restrictive Type

350 bar [5000 psi] • 114 l/min [30 US gpm]

DESCRIPTION AND OPERATION

This is a 3-ported spool valve, where port 3 is connected to port 2 and port 1 is the pilot port. The spring chamber is connected to port 3 through an orifice. When port 3 is connected to the outlet of a control orifice and port 1 is connected upstream of the orifice, the valve functions as a restrictive pressure compensator. When the pressure drop across the orifice is equal to the spring set pressure, the spool restricts flow from port 3 to port 2 and compensates for any change in pressure difference across the valve.

SCHEMATIC

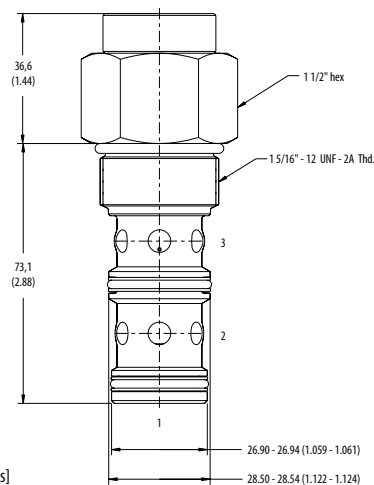


PERFORMANCE DATA

Rated pressure	350 bar [5000 psi]
Rated flow	114 l/min [30 US gpm]
Weight	0.38 kg [0.84 lb]
Cavity	SDC16-3

DIMENSIONS

mm [in]

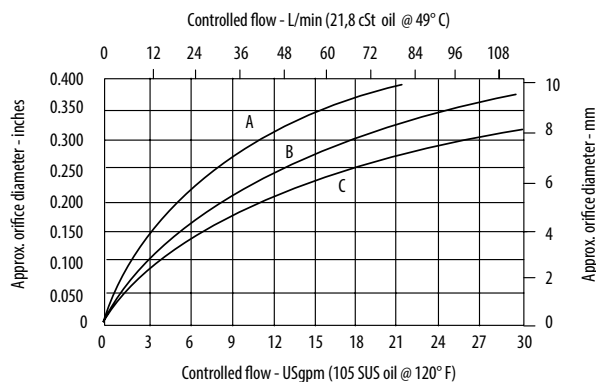


Installation torque

A-108-122 Nm [80-90 ft lbs]

S-136-149 Nm [100-110 ft lbs]

PERFORMANCE CURVES



A-2.8 bar [40 psi] • B-5.5 bar [80 psi] • C-11.0 bar [160 psi]

MODEL CODE

PCS13 - 16 - V - A - 4G - S - 40

Seal Option

Code Seal kit

Omit-Buna - N 565811

V-Viton 889610

Housing Material

Omit-No housing

A-Aluminum

S-Steel

Housing

Code	Ports	Aluminum Heavy duty	Steel
0	No Housing		
10H	#10 SAE	876721	
12H	#12 SAE	876723	
4G	1/2" BSP	876720	02-175131
6G	3/4" BSP	876722	02-175132
10T	#10 SAE		02-175129
12T	#12 SAE		02-175130

* Aluminum bodies are to be used for pressures less than 210 bar [3000 psi].

* Additional housings available

Differential Pressure

Code Bar Psi

40 2.8 [40]

80 5.5 [80]

160 11.0 [160]

Spool Seal Option

Omit - No seal

S - Seals included