

Logic Elements

PCS13-12

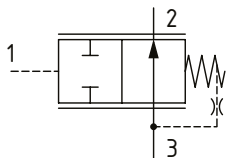
Pressure Compensator, Restrictive Type

350 bar [5000 psi] • 58 l/min [15 US gpm]

DESCRIPTION AND OPERATION

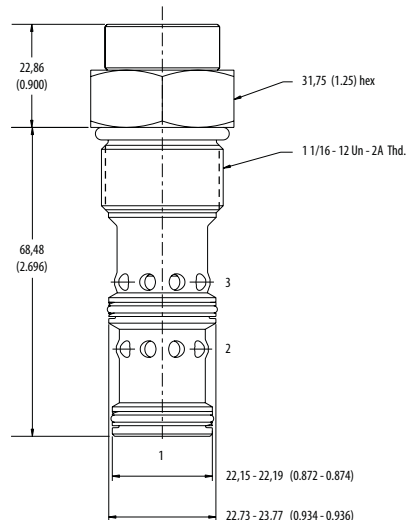
This is a 3-ported spool valve, where port 3 is connected to port 2 and port 1 is the pilot port. The spring chamber is connected to port 3 through an orifice. When port 3 is connected to the outlet of a control orifice. When port 1 is connected upstream of the orifice, the valve functions as a restrictive pressure compensator. When the pressure drop across the orifice is equal to the spring set pressure, the spool restricts flow from port 3 to port 2 and compensates for any change in pressure difference across the valve.

SCHEMATIC



DIMENSIONS

mm [in]

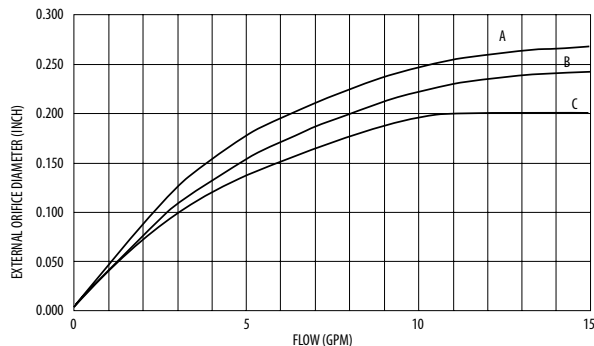


Installation torque
 A-81-95 Nm [60-70 ft lbs]
 S-102-115 Nm [75-85 ft lbs]

PERFORMANCE DATA

Rated pressure	350 bar [5000 psi]
Rated flow	58 l/min [15 US gpm]
Weight	0.30 kg [0.55 lb]
Cavity	C-12-3

PERFORMANCE CURVES



A-2.8 bar [40 psi] • B-5.5 bar [80 psi] • C-11.0 bar [160 psi]

MODEL CODE

PCS13 - 12 - V - A - 0 - S - 40

Seal Option

Code	Seal kit
Omit-Buna - N	9900333-000
V-Viton	9900334-000

Housing Material

Omit-No housing
 A-Aluminum
 S-Steel

Housing

Code	Ports	Aluminum Heavy duty	Steel
0	No housing		
4G	1/2" BSP	02-161817	02-169815
6G	3/4" BSP	02-161816	02-169814
10H	#10 SAE	02-160642	
12H	#12 SAE	02-160646	
10T	#10 SAE		02-161070
12T	#12 SAE		02-169816

* Aluminum bodies are to be used for pressures less than 210 bar [3000 psi].

* Additional housings available

Differential Pressure

Code	Bar	Psi
40	2.8	[40]
80	5.5	[80]
120	8.3	[120]
160	11.0	[160]

Spool Seal Option

Omit - No seal
 S - Seal included