

# Logic Elements

## PFRS-12

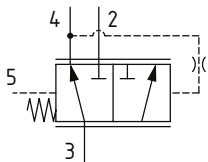
Pressure Compensator, Load Sense, Static, Priority Type

280 bar [4000 psi] • 76 l/min [20 US gpm]

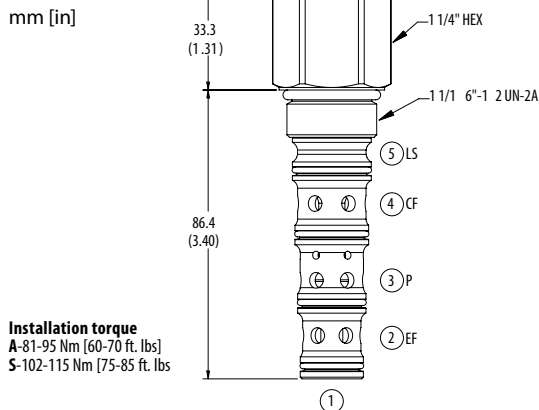
### DESCRIPTION AND OPERATION

This is a 5-ported, static, priority load sense pressure compensator that supplies fluid on demand to an actuator or a steering valve. Flow passes from the inlet port 3 to the controlled flow port 4. Pressure in port 4 is connected to port 1 (which is plugged) through an orifice. When the pressure in port 1 is higher than the load sense pressure in port 5, the spool moves against the spring and begins to open port 2 and allows excess flow to pass to the rest of the system. When the flow is no longer required through the controlled port and the load sense line falls, all of the oil will pass to the excess flow port 2.

### SCHEMATIC



### DIMENSIONS



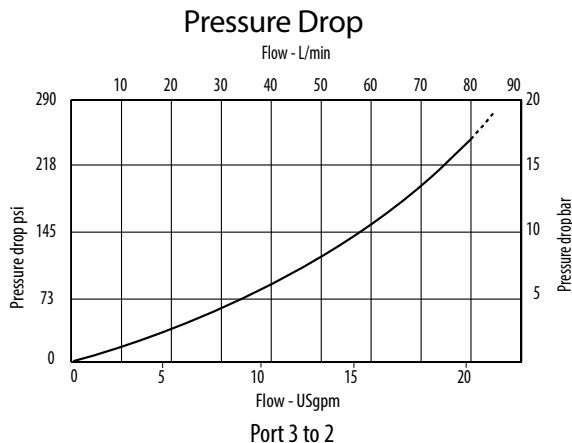
### PERFORMANCE DATA

Rated pressure	280 bar [4000 psi]
Rated flow	76 l/min [20 US gpm]
Leakage	164 ml/min [10 in <sup>3</sup> /min] @ 210 bar [3000 psi]
Weight	0.36 kg [0.79 lb]
Cavity	C-12-5S

Note: Port 1 is unused and should be plugged.

Note: Minimum inlet flow should not be less than 1/4 maximum of inlet flow.

### PERFORMANCE CURVES



### MODEL CODE

PFRS - 12 - U - A - 10T - 075

#### Seal Option

Code	Seal kit
U-Urethane	202914-921

#### Housing Material

0-No housing  
A-Aluminum  
S-Steel

#### Housing

Code	Port 2, 3 & 4	Port 5	Aluminum	Steel
000	No housing			
10T	#10 SAE	#4 SAE	4998820-001	4998821-001
12T	#12 SAE	#4 SAE	4998820-002	4998821-002
04G	1/2" BSP	1/4" BSP	4998820-003	4998821-003
06G	3/4" BSP	1/4" BSP	4998820-004	4998821-004

\* Aluminum bodies are to be used for pressures less than 210 bar [3000 psi].

\* Additional housings available

#### Differential Pressure

Code	Bar	Psi
055	3.8	[55]
078	5.4	[78]
100	6.9	[100]