

Logic Elements

CP300-4

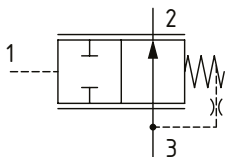
Pressure Compensator, Restrictive Type

210 bar [3000 psi] • 40 l/min [11 US gpm]

DESCRIPTION AND OPERATION

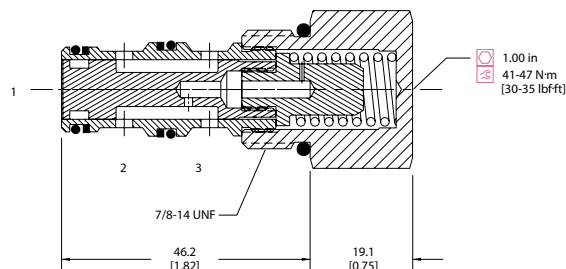
This is a 3-ported spool valve, where port 3 is connected to port 2 and port 1 is the pilot port. The spring chamber is connected to port 3 through an orifice. When port 3 is connected to the outlet of a control orifice and port 1 is connected upstream of the orifice, the valve functions as a restrictive pressure compensator. When the pressure drop across the orifice is equal to the spring set pressure, the spool restricts flow from port 3 to port 2 and compensates for any change in pressure difference across the valve.

SCHEMATIC



DIMENSIONS

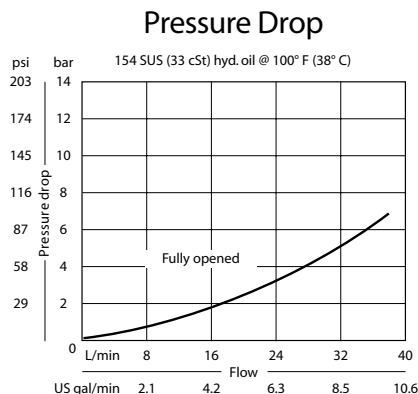
mm [in]



PERFORMANCE DATA

Rated pressure	210 bar [3000 psi]
Rated flow	40 l/min [11 US gpm]
Weight	0.13 kg [0.29 lb]
Cavity	SDC10-3

PERFORMANCE CURVES



MODEL CODE

CP300 - 4 - B - 8S - 0 - 080

Seal Option

Code	Seal kit
B-Buna - N	120027
V-Viton	120028

Housing

Code	Ports & Material	Housing Model Code
0	No Housing	
SE3B	AL, 3/8 BSP	SDC10-3-SE-3B
SE4B	AL, 1/2 BSP	SDC10-3-SE-4B
6S	AL, #6 SAE	CP10-3-6S
8S	AL, #8 SAE	CP10-3-8S

* Aluminum bodies are to be used for pressures less than 210 bar [3000 psi].

* Additional housings available

Differential Pressure

Code	Bar	Psi
040	2.8	[40]
080	5.5	[80]
110	7.6	[110]
150	10.3	[150]
190	13.1	[190]

Spool Seal Option

0 - No Seal
S - Seal included