

# Logic Elements

## CP301-4

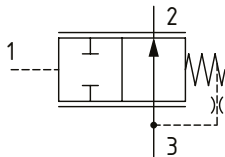
Pressure Compensator, Restrictive Type

210 bar [3000 psi] • 90 l/min [24 US gpm]

### DESCRIPTION AND OPERATION

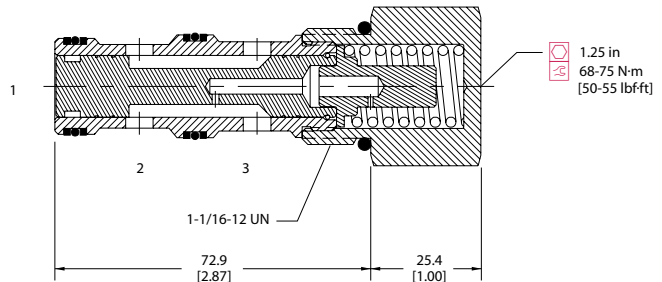
This is a 3-ported spool valve, where port 3 is connected to port 2 and port 1 is the pilot port. The spring chamber is connected to port 3 through an orifice. When port 3 is connected to the outlet of a control orifice and port 1 is connected upstream of the orifice, the valve functions as a restrictive pressure compensator. When the pressure drop across the orifice is equal to the spring set pressure, the spool restricts flow from port 3 to port 2 and compensates for any change in pressure difference across the valve.

### SCHEMATIC



### DIMENSIONS

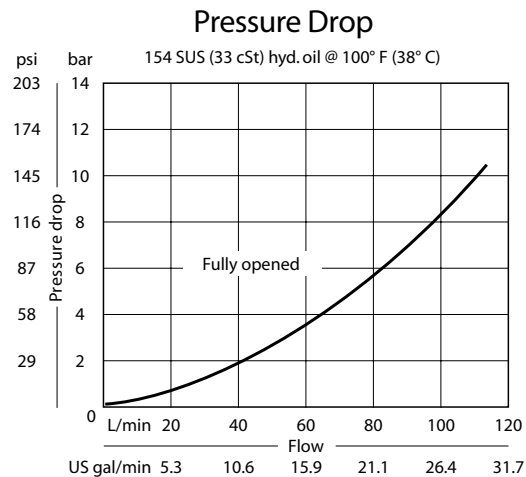
mm [in]



### PERFORMANCE DATA

<b>Rated pressure</b>	<b>210 bar [3000 psi]</b>
<b>Rated flow</b>	<b>90 l/min [24 US gpm]</b>
<b>Weight</b>	<b>0.30 kg [0.67 lb]</b>
<b>Cavity</b>	<b>CP12-3</b>

### PERFORMANCE CURVES



### MODEL CODE

**CP301 - 4 - B - 10S - 0 - 050**

#### Seal Option

Code	Seal kit
<b>B</b> -Buna - N	120053
<b>V</b> -Viton	120052

#### Housing

Code	Ports & Material	Housing Model Code
<b>0</b>	No Housing	
<b>10S</b>	AL, #10 SAE	CP12-3-10S
<b>12S</b>	AL, #12 SAE	CP12-3-12S
<b>4B</b>	AL, 1/2 BSP	CP12-3-4B
<b>6B</b>	AL, 3/4 BSP	CP12-3-6B

#### Differential Pressure

Code	Bar	Psi
<b>050</b>	3.5	[50]
<b>080</b>	5.5	[80]
<b>100</b>	6.9	[100]
<b>150</b>	10.3	[150]
<b>190</b>	13.1	[190]

#### Spool Seal Option

**0** - No Seal  
**S** - Seal included

\* Aluminum bodies are to be used for pressures less than 210 bar [3000 psi].

\* Additional housings available