

## Logic Elements

### CP303-4

Pressure Compensator, Restrictive Type

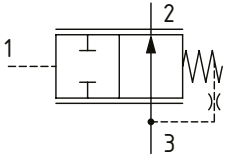
210 bar [3000 psi] • 284 l/min [75 US gpm]



#### DESCRIPTION AND OPERATION

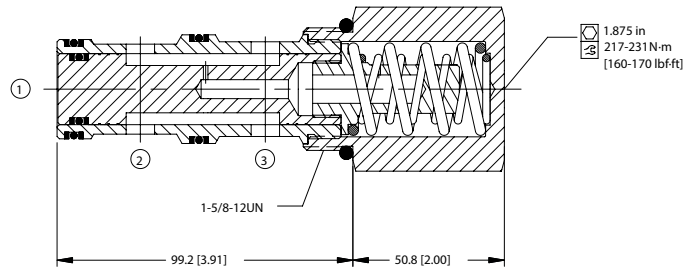
This is a 3-ported spool valve, where port 3 is connected to port 2 and port 1 is the pilot port. The spring chamber is connected to port 3 through an orifice. When port 3 is connected to the outlet of a control orifice and port 1 is connected upstream of the orifice, the valve functions as a restrictive pressure compensator. When the pressure drop across the orifice is equal to the spring set pressure, the spool restricts flow from port 3 to port 2 and compensates for any change in pressure difference across the valve.

#### SCHEMATIC



#### DIMENSIONS

mm [in]

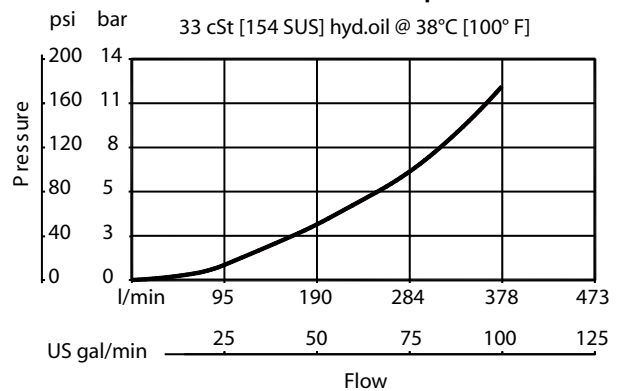


#### PERFORMANCE DATA

|                |                       |
|----------------|-----------------------|
| Rated pressure | 210 bar [3000 psi]    |
| Rated flow     | 284 l/min [75 US gpm] |
| Weight         | 1.11 kg [2.45 lb]     |
| Cavity         | SDC20-3               |

#### PERFORMANCE CURVES

##### Pressure Drop



#### MODEL CODE

CP303 - 4 - B - 16S - 0 - 050

##### Seal Option

| Code       | Seal kit |
|------------|----------|
| B-Buna - N | 120200   |
| V-Viton    | 120201   |

##### Housing

| Code | Ports & Material | Housing Model Code |
|------|------------------|--------------------|
| 0    | No Housing       |                    |
| 16S  | AL, #16 SAE      | CP20-3-16S         |
| 20S  | AL, #20 SAE      | CP20-3-20S         |
| 8B   | AL, 1 BSP        | CP20-3-8B          |
| 10B  | AL, 1-1/4 BSP    | CP20-3-10B         |

\* Aluminum bodies are to be used for pressures less than 210 bar [3000 psi].

\* Additional housings available

##### Differential Pressure

| Code | Bar  | Psi   |
|------|------|-------|
| 050  | 3.4  | [50]  |
| 080  | 5.5  | [80]  |
| 100  | 6.9  | [100] |
| 130  | 9.0  | [130] |
| 150  | 10.3 | [150] |

##### Spool Seal Option

0 - No Seal  
S - Seal included