

Logic Elements

CP310-6

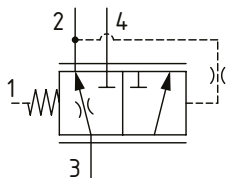
Pressure Compensator, Load Sense, Static, Priority Type

210 bar [3000 psi] • 40 l/min [11 US gpm]

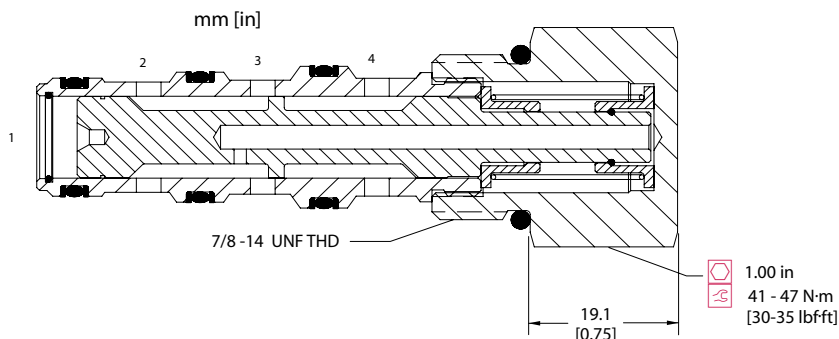
DESCRIPTION AND OPERATION

This is a 4-ported, static, priority load sense pressure compensator. Flow passes from the inlet port 3 to the priority port 2, which is connected to the inlet of a control orifice. Port 1 is the load sense port which connects to the outlet of the control orifice. The valve maintains the priority flow to port 2 regardless of inlet pressure change or load pressure changes, while also allowing excess flow to pass to the rest of the system through port 4. This valve is ideal for use in a system where the excess flow at port 4 needs to work at a higher pressure than the pressure of the priority flow at port 2. Additionally, the valve will allow flow to the excess port 4 when the priority port 2 is blocked.

SCHEMATIC



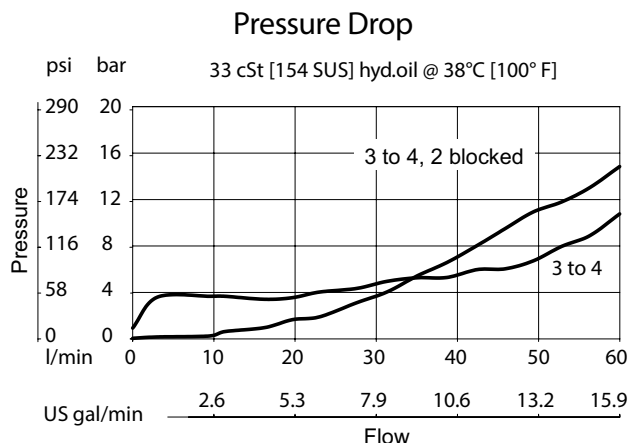
DIMENSIONS



PERFORMANCE DATA

Rated pressure	210 bar [3000 psi]
Rated flow	40 l/min [11 US gpm]
Weight	0.15 kg [0.32 lb]
Cavity	SDC10-4

PERFORMANCE CURVES



MODEL CODE

CP310 - 6 - B - 6S - 080

Seal Option

Code	Seal kit
B-Buna - N	120023
V-Viton	120024

Housing

Code	Ports & Material	Housing Model Code
0	No Housing	
L3B	AL, 3/8 BSP	SDC10-4-L-3B
L4B	AL, 1/2 BSP	SDC10-4-L-4B
6S	AL, #6 SAE	CP10-4-6S
8S	AL, #8 SAE	CP10-4-8S

Differential Pressure

Code	Bar	Psi
080	5.5	[80]
150	10.3	[150 psi]

* Aluminum bodies are to be used for pressures less than 210 bar [3000 psi].

* Additional housings available