

# Logic Elements

## CP700-1

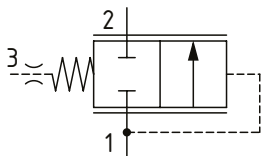
Logic Element, Normally Closed, Spool Type, Pilot to Close

210 bar [3000 psi] • 50 l/min [13 US gpm]

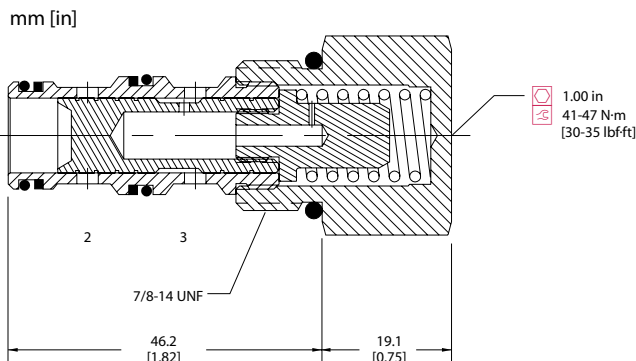
### DESCRIPTION AND OPERATION

This is a 3-ported, normally closed, pilot to close spool type logic element. By opening port 3 to tank, flow can pass from port 1 to port 2. Flow is blocked from port 1 to port 2 unless the pressure is high enough in port 1 to overcome the spring set pressure. Applying pressure to port 3 will increase the pressure required in port 1 to open the valve by a factor of 1 to 1. This valve is ideal for use as a pressure compensator, bypass valve, or a pilot to close valve in regenerative circuits.

### SCHEMATIC



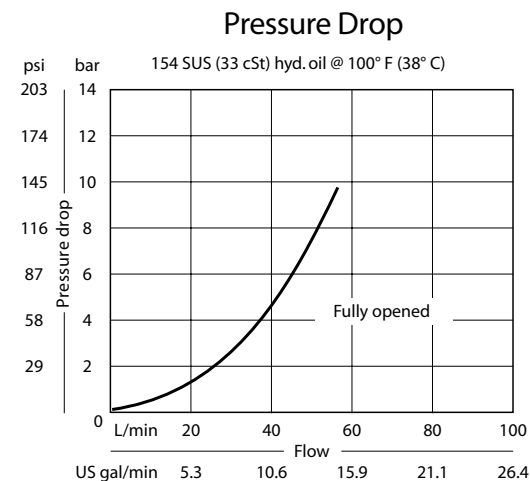
### DIMENSIONS



### PERFORMANCE DATA

<b>Rated pressure</b>	<b>210 bar [3000 psi]</b>
<b>Rated flow</b>	<b>50 l/min [13 US gpm]</b>
<b>Weight</b>	<b>0.12 kg [0.27 lb]</b>
<b>Cavity</b>	<b>SDC10-3</b>

### PERFORMANCE CURVES



### MODEL CODE

**CP700 - 1 - B - 8S - 080**

#### Seal Option

Code	Seal kit
<b>B</b> -Buna - N	120027
<b>V</b> -Viton	120028

#### Housing

Code	Ports & Material	Housing Model Code
<b>0</b>	No Housing	
<b>SE3B</b>	AL, 3/8 BSP	SDC10-3-SE-3B
<b>SE4B</b>	AL, 1/2 BSP	SDC10-3-SE-4B
<b>6S</b>	AL, #6 SAE	CP10-3-6S
<b>8S</b>	AL, #8 SAE	CP10-3-8S

#### Differential Pressure

Code	Bar	Psi
<b>040</b>	2.8	[40]
<b>080</b>	5.5	[80]
<b>110</b>	7.6	[110]
<b>150</b>	10.3	[150]
<b>190</b>	13.1	[190]

\* Aluminum bodies are to be used for pressures less than 210 bar [3000 psi].

\* Additional housings available