

# Logic Elements

## CP700-2

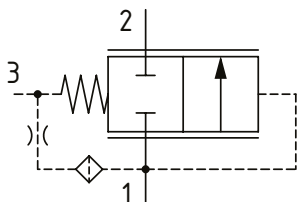
Logic Element, Normally Closed, Spool Type, Vent to Open

210 bar [3000 psi] • 50 l/min [13 US gpm]

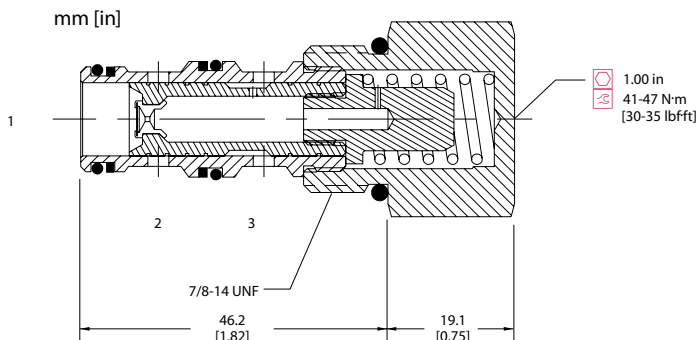
### DESCRIPTION AND OPERATION

This is a 3-ported, normally closed, vent to open spool type logic element. Port 1 is connected to port 3 through an orifice. By opening port 3 to tank, flow can pass from port 1 to port 2 but not from port 2 to port 1. Closing port 3 will prevent the valve from opening from port 1 to port 2. By controlling the flow or pressure out of port 3 with a secondary valve, the valve can be used as an on/off valve or in a pressure control function.

### SCHEMATIC



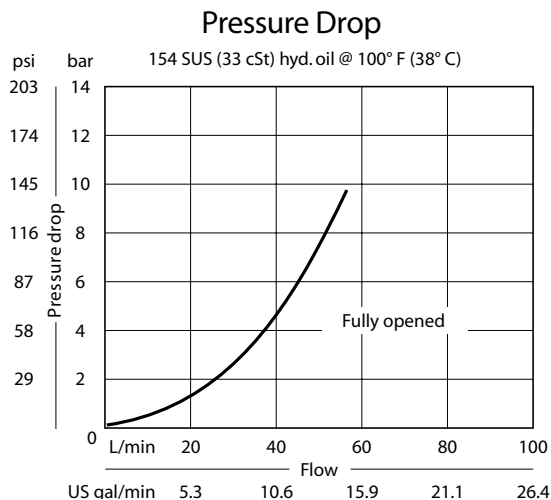
### DIMENSIONS



### PERFORMANCE DATA

Rated pressure	210 bar [3000 psi]
Rated flow	50 l/min [13 US gpm]
Weight	0.13 kg [0.28 lb]
Cavity	SDC10-3

### PERFORMANCE CURVES



### MODEL CODE

**CP700 - 2 - B - 8S - 080**

#### Seal Option

Code	Seal kit
B-Buna - N	120027
V-Viton	120028

#### Housing

Code	Ports & Material	Housing Model Code
0	No Housing	
SE3B	AL, 3/8 BSP	SDC10-3-SE-3B
SE4B	AL, 1/2 BSP	SDC10-3-SE-4B
6S	AL, #6 SAE	CP10-3-6S
8S	AL, #8 SAE	CP10-3-8S

#### Differential Pressure

Code	Bar	Psi
040	2.8	[40]
080	5.5	[80]
110	7.6	[110]
150	10.3	[150]
190	11.7	[190]

\* Aluminum bodies are to be used for pressures less than 210 bar [3000 psi].

\* Additional housings available