

Logic Elements

CP700-3

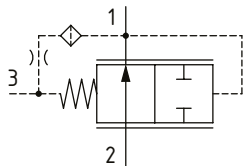
Logic Element, Normally Open, Spool Type, Vent to Close

210 bar [3000 psi] • 40 l/min [11 US gpm]

DESCRIPTION AND OPERATION

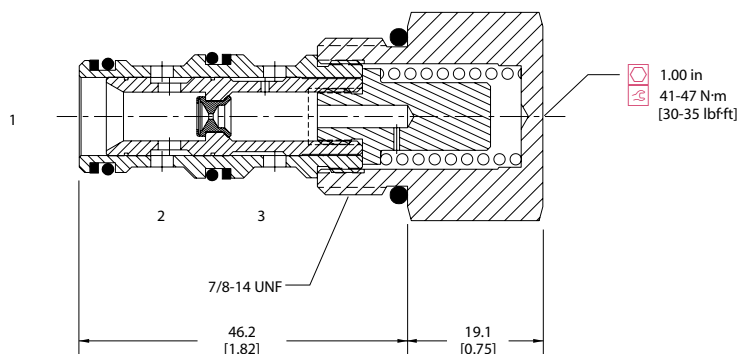
This is a 3-ported, normally open, vent to close, spool type logic element. Port 1 is connected to port 3 through an orifice. By opening port 3 to tank, flow is blocked from port 1 to port 2 and port 2 to port 1. Closing port 3 will keep the valve open from port 1 to port 2 and port 2 to 1. By controlling the flow or pressure out of port 3 with a secondary valve, this can be used as an on/off valve or as a pressure reducing valve.

SCHEMATIC



DIMENSIONS

mm [in]

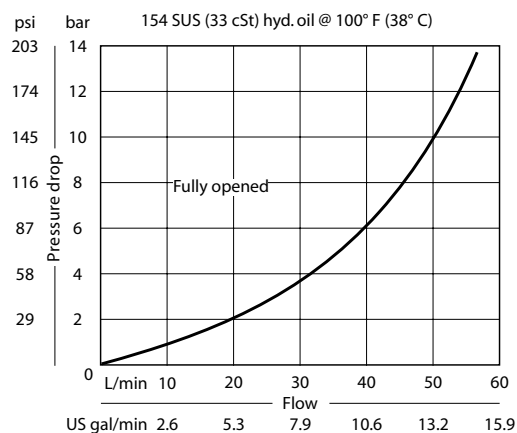


PERFORMANCE DATA

Rated pressure	210 bar [3000 psi]
Rated flow @ 7 bar [100 psi]	40 l/min [11 US gpm]
Weight	0.13 kg [0.28 lb]
Cavity	SDC10-3

PERFORMANCE CURVES

Pressure Drop



MODEL CODE

CP700 - 3 - B - 8S - 080

Seal Option

Code	Seal kit
B-Buna - N	120027
V-Viton	120028

Housing

Code	Ports & Material	Housing Model Code
0	No Housing	
SE3B	AL, 3/8 BSP	SDC10-3-SE-3B
SE4B	AL, 1/2 BSP	SDC10-3-SE-4B
6S	AL, #6 SAE	CP10-3-6S
8S	AL, #8 SAE	CP10-3-8S

Differential Pressure

Code	Bar	Psi
040	2.8	[40]
080	5.5	[80]
110	7.6	[110]
150	10.3	[150]
200	13.8	[200]

* Aluminum bodies are to be used for pressures less than 210 bar [3000 psi].

* Additional housings available